



## BXUV.U408 Fire Resistance Ratings - ANSI/UL 263

Page Bottom

### Design/System/Construction/Assembly Usage Disclaimer

- Authorities Having Jurisdiction should be consulted in all cases as to the particular requirements covering the installation and use of UL Listed or Classified products, equipment, system, devices, and materials.
- Authorities Having Jurisdiction should be consulted before construction.
- Fire resistance assemblies and products are developed by the design submitter and have been investigated by UL for compliance with applicable requirements. The published information cannot always address every construction nuance encountered in the field.
- When field issues arise, it is recommended the first contact for assistance be the technical service staff provided by the product manufacturer noted for the design. Users of fire resistance assemblies are advised to consult the general Guide Information for each product category and each group of assemblies. The Guide Information includes specifics concerning alternate materials and alternate methods of construction.
- Only products which bear UL's Mark are considered as Classified, Listed, or Recognized.

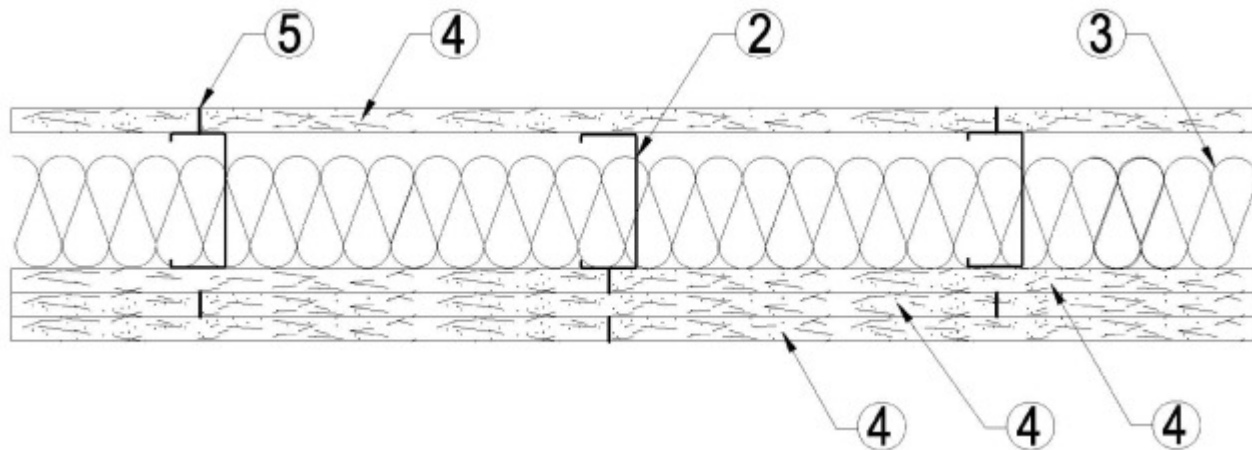
### Fire Resistance Ratings - ANSI/UL 263

See General Information for Fire Resistance Ratings - ANSI/UL 263

Design No. U408

March 23, 2009

Nonbearing Wall Rating — 2 Hr



1. **Floor and Ceiling Runners** — (Not Shown) - Channel shaped, 3-1/2 in. (min) deep, with min 1-1/4 in. long legs, fabricated from min 25 MSG corrosion-protected steel, attached to floor and ceiling with fasteners 24 in. OC max.

1A. **Framing Members - Floor and Ceiling Runner\*** — Not shown - In lieu of Item 1 — For use with Item 2A, proprietary channel shaped runners, 1-1/4 in. deep by 3-1/2 in. wide fabricated from min 0.0200 in. thick galv steel, attached to floor and ceiling with fasteners spaced 24 in. OC max.

**MARINO\WARE A DIV OF WARE INDUSTRIES**

**INC** — Viper20S™ Track, Viper20D™ Track

2. **Steel Studs** — Channel shaped, min 3-1/2 in. deep, 1-1/4 in. flanges and 3/16 in. returns, fabricated from min 25 MSG corrosion-protected steel, spaced a max of 24 in. OC. Studs to be cut 5/8 in. less than assembly height and friction-fit in place.

2A. **Framing Members - Metal Studs\*** — Not shown - In lieu of Item 2 — For use with Item 1A, proprietary channel shaped steel studs, 1-1/4 in. deep by 3-1/2 in. wide fabricated from min 0.0200 in. thick galv steel. Studs

5/8 in. less in lengths than assembly heights.

#### **MARINOWARE A DIV OF WARE INDUSTRIES**

**INC** — Viper20S™, Viper20D™

3. **Batts and Blankets\*** — (Optional) Placed in stud cavities, any glass fiber or mineral wool insulation bearing the UL Classification Marking as to Surface Burning Characteristics and/or Fire Resistance. See **Batts and Blankets** (BKNV or BZJZ) Categories for names of Classified companies.

4. **Gypsum Board\*** — Gypsum panels with beveled, square or tapered edges. Base layer applied vertically or horizontally on both sides of the studs, with vertical joints centered over studs and staggered one stud cavity on opposite sides of studs. Horizontal edge joints (when applied horizontally) and horizontal butt joints (when applied vertically) on opposite sides of studs need not be staggered or backed. Base layer panels attached to studs with 1 in. long Type S screws spaced 8 in. OC when applied horizontally, or 8 in. OC along the vertical edges and 12 in. OC in the field when applied vertically. Remaining two layers applied vertically or horizontally on one side of the wall. Horizontal butt joints staggered a min of 6 in. on adjacent layers. First of these two layers attached to studs with 1-5/8 in. long Type S screws spaced 12 in. OC. Face layer attached to studs with 2-3/8 in. Type S screws spaced 8 in. OC when applied horizontally, or 8 in. OC along the vertical edges and 12 in. OC in the field when applied vertically. When used in widths other than 48 in., gypsum panels to be installed horizontally.

**CANADIAN GYPSUM COMPANY** — 5/8 in. thick Type AR, C, IP-AR, IP-X1, IP-X2, IPC-AR, SCX, SHX, WRX or WRC.

**UNITED STATES GYPSUM CO** — 5/8 in. thick Type AR, C, FRX-G, IP-AR, IP-X1, IP-X2, IPC-AR, SCX, SHX, WRX, WRC, USGX (Joint tape and compound, Item 5, optional for use with Type USGX).

**USG MEXICO S A DE C V** — 5/8 in. thick Type AR, C, IP-AR, IP-X1, IP-X2, IPC-AR, SCX, SHX, WRX, WRC.

5. **Joint Tape and Compound** — Vinyl or casein, dry or premixed joint compound applied in two coats to joints and screw heads of outer layers. Paper tape, nom 2 in. wide, embedded in first layer of compound over all joints of outer layer panels. When square-edge gypsum board is used, treatment of joints is optional.

6. **Caulking and Sealants\*** — (Optional, not shown) - A bead of acoustical sealant applied around the partition perimeter for sound control.

**UNITED STATES GYPSUM CO** — Type AS

\*Bearing the UL Classification Mark

Last Updated on 2009-03-23

[Questions?](#)

[Notice of Disclaimer](#)

[Page Top](#)

Copyright © 2009 Underwriters Laboratories Inc.®

The appearance of a company's name or product in this database does not in itself assure that products so identified have been manufactured under UL's Follow-Up Service. Only those products bearing the UL Mark should be considered to be Listed and covered under UL's Follow-Up Service. Always look for the Mark on the product.

UL permits the reproduction of the material contained in the Online Certification Directory subject to the following conditions: 1. The Guide Information, Designs and/or Listings (files) must be presented in their entirety and in a non-misleading manner, without any manipulation of the data (or drawings). 2. The statement "Reprinted from the Online Certifications Directory with permission from Underwriters Laboratories Inc." must appear adjacent to the extracted material. In addition, the reprinted material must include a copyright notice in the following format: "Copyright © 2009 Underwriters Laboratories Inc.®"

An independent organization working for a safer world with integrity, precision and knowledge.

