



BXUV.U431 Fire Resistance Ratings - ANSI/UL 263

Page Bottom

Design/System/Construction/Assembly Usage Disclaimer

- Authorities Having Jurisdiction should be consulted in all cases as to the particular requirements covering the installation and use of UL Listed or Classified products, equipment, system, devices, and materials.
- Authorities Having Jurisdiction should be consulted before construction.
- Fire resistance assemblies and products are developed by the design submitter and have been investigated by UL for compliance with applicable requirements. The published information cannot always address every construction nuance encountered in the field.
- When field issues arise, it is recommended the first contact for assistance be the technical service staff provided by the product manufacturer noted for the design. Users of fire resistance assemblies are advised to consult the general Guide Information for each product category and each group of assemblies. The Guide Information includes specifics concerning alternate materials and alternate methods of construction.
- Only products which bear UL's Mark are considered as Classified, Listed, or Recognized.

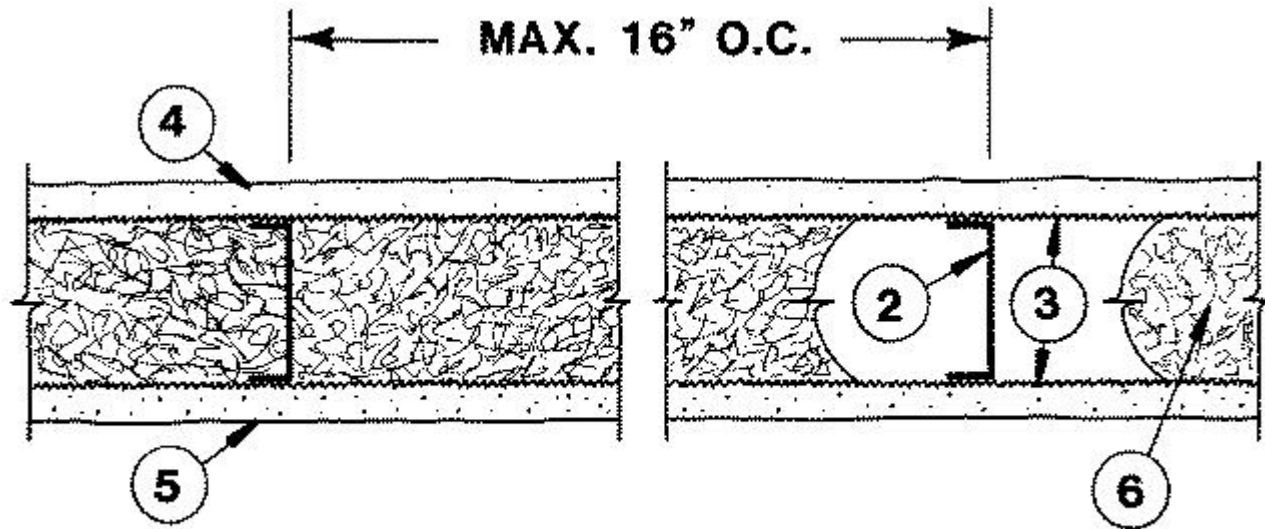
Fire Resistance Ratings - ANSI/UL 263

See General Information for Fire Resistance Ratings - ANSI/UL 263

Design No. U431

March 23, 2009

Nonbearing Wall Rating — 4 Hr.



HORIZONTAL SECTION

1. **Floor and Ceiling Runners** — (Not shown) — Channel shaped 1/2 in. deep by 3-5/8 in. wide, No. 25 gauge painted steel. Secured with 3/4 in. long concrete fasteners spaced 18 in. O.C.

1A. **Framing Members - Floor and Ceiling Runner*** — Not shown - In lieu of Item 1 — For use with Item 2A, proprietary channel shaped runners, 1-1/4 in. deep by 3-5/8 in. wide fabricated from min 0.0200 in. thick galv steel, attached to floor and ceiling with fasteners spaced 18 in. OC max.

MARINO\WARE A DIV OF WARE INDUSTRIES

INC — Viper20S™ Track, Viper20D™ Track

2. **Metal Studs** — Channel shaped, 3-5/8 in. wide with 1-1/4 in. legs, 1/4 in. folded back return flange in legs, No. 25 MSG min galv steel, spaced not more than 16 in. O.C. Stud length 3/8 in. less than assembly height.

2A. **Framing Members - Metal Studs*** — Not shown - In lieu of Item 2 — For use with Item 1A, proprietary channel shaped steel studs, 1-1/4 in. deep by 3-5/8 in. wide fabricated from min 0.0200 in. thick galv steel. Studs 3/8 in. less in lengths than assembly heights.

MARINO\WARE A DIV OF WARE INDUSTRIES

INC — Viper20S™, Viper20D™

3. **Metal Lath** — Diamond mesh, expanded steel 3.4 lbs per sq yd, 27 by 96 in. sheets tied to iron bands and at laps 6 in. O.C. with No. 18 SWG wire.

4. **Plaster** — 3/4 in. thick, scratch coat of 2 cu ft of sand and brown coat of 3 cu ft of sand to 100 lbs of unfibred gypsum. Finish coat of three parts lime to two parts quick set gauging plaster by volume.

5. **Portland Cement Plaster** — 3/4 in. thick applied in scratch coat consisting of 100 lb cement to 50 lb lime 5-1/2 cu ft. of sand, coat consisting of 100 lb cement to 50 lb lime to 6cu ft of sand.

6. **Sprayed-Applied Fire Resistive Materials*** — Sprayed in stud cavities to completely fill interior of walls. For method of density determination, refer to Design Information Section. Applied by mixing with water and spraying. Minimum average density of 12 pcf with minimum ind. value of 11 pcf for Type II or DC/F. Min avg and min ind untamped densities of 22 and 19 pcf, respectively, for Type HP.

ISOLATEK INTERNATIONAL — Types D-C/F, II or HP. Type EBS or Type X adhesive/sealer is optional.

7. **Iron Bands** — (Not shown) — Hot rolled iron bands, 1/8 in. thick by 3/8 in. wide, with ribs 1 in. high by 1 in. wide installed horizontally and spaced 16 in. OC. Welded to metal studs and runners at each rib.

8. **Metal Lath** — (Not shown) — in lieu of Items 3 and 7, 3/8 in. rib, 3.4 lb/sq yd expanded metal lath. Fastened to studs, with ribbed side placed against studs, with No. 18 SWG wire spaced 6 in. OC. Fastened to runners with 1/2 in. long self-drilling, self-tapping steel screws spaced 6 in. OC. Laps 6 in. min and tied with No. 18 SWG wire spaced 6 in. OC. min.

*Bearing the UL Classification Mark

Last Updated on 2009-03-23

[Questions?](#)

[Notice of Disclaimer](#)

[Page Top](#)

Copyright © 2009 Underwriters Laboratories Inc.®

The appearance of a company's name or product in this database does not in itself assure that products so identified have been manufactured under UL's Follow-Up Service. Only those products bearing the UL Mark should be considered to be Listed and covered under UL's Follow-Up Service. Always look for the Mark on the product.

UL permits the reproduction of the material contained in the Online Certification Directory subject to the following conditions: 1. The Guide Information, Designs and/or Listings (files) must be presented in their entirety and in a non-misleading manner, without any manipulation of the data (or drawings). 2. The statement "Reprinted from the Online Certifications Directory with permission from Underwriters Laboratories Inc." must appear adjacent to the extracted material. In addition, the reprinted material must include a copyright notice in the following format: "Copyright © 2009 Underwriters Laboratories Inc.®"

An independent organization working for a safer world with integrity, precision and knowledge.

