



BXUV.U451 Fire Resistance Ratings - ANSI/UL 263

Page Bottom

Design/System/Construction/Assembly Usage Disclaimer

- Authorities Having Jurisdiction should be consulted in all cases as to the particular requirements covering the installation and use of UL Listed or Classified products, equipment, system, devices, and materials.
- Authorities Having Jurisdiction should be consulted before construction.
- Fire resistance assemblies and products are developed by the design submitter and have been investigated by UL for compliance with applicable requirements. The published information cannot always address every construction nuance encountered in the field.
- When field issues arise, it is recommended the first contact for assistance be the technical service staff provided by the product manufacturer noted for the design. Users of fire resistance assemblies are advised to consult the general Guide Information for each product category and each group of assemblies. The Guide Information includes specifics concerning alternate materials and alternate methods of construction.
- Only products which bear UL's Mark are considered as Classified, Listed, or Recognized.

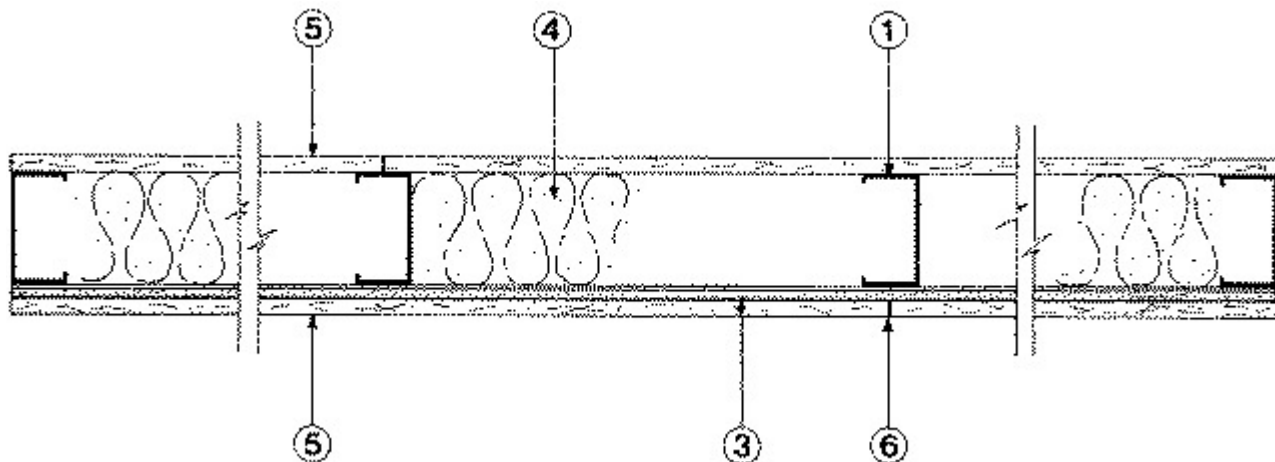
Fire Resistance Ratings - ANSI/UL 263

[See General Information for Fire Resistance Ratings - ANSI/UL 263](#)

Design No. U451

March 23, 2009

Nonbearing Wall Rating — 1 HR.



1. **Studs** — Channel-shaped, 2-1/2 in. wide by 1-1/4 in. deep with 5/16 in. folded back return flange legs. Fabricated from No. 25 MSG galv steel. Max stud spacing 24 in. OC. Studs to be cut 1 in. less than assembly height.

1A. **Framing Members - Metal Studs*** — Not shown - In lieu of Item 1 — For use with Item 2A, proprietary channel shaped steel studs, 1-1/4 in. deep by 2-1/2 in. wide fabricated from min 0.0200 in. thick galv steel. Studs 1 in. less in lengths than assembly heights.

MARINO\WARE A DIV OF WARE INDUSTRIES

INC — Viper20S™, Viper20D™

2. **Floor and Ceiling Runners (Not Shown)** — Channel-shaped runners, 2-1/2 in. wide by 1-1/4 in. deep, fabricated from No. 20 MSG galv steel. Attached to floor and ceiling with fasteners, 24 in. OC, max.

2A. **Framing Members - Floor and Ceiling Runner*** — Not shown - In lieu of Item 2 — For use with Item 1A, proprietary channel shaped runners, 1-1/4 in. deep by 2-1/2 in. wide fabricated from min 0.0200 in. thick galv steel, attached to floor and ceiling with fasteners spaced 24 in. OC max.

MARINO\WARE A DIV OF WARE INDUSTRIES

INC — Viper20S™ Track, Viper20D™ Track

3. **Resilient Channel** — 25 MSG galv steel resilient channels spaced vertically max 24 in. OC, flange portion attached to each intersecting stud with 1/2 in. long Type S-12 pan head steel screws.

3A. **Steel Framing Members (Not Shown)*** — As an alternate to Item 3, furring channels and Steel Framing Members as described below:

a. **Furring Channels** — Formed of No. 25 MSG galv steel. 2-3/8 in. wide by 7/8 in. deep, spaced 24 in. OC perpendicular to studs. Channels secured to studs as described in Item b. Ends of adjoining channels are overlapped 6 in. and tied together with double strand of No. 18 SWG galv steel wire near each end of overlap. As an alternate, ends of adjoining channels may be overlapped 6 in. and secured together with two self-tapping #6 framing screws, min. 7/16 in. long at the midpoint of the overlap, with one screw on each flange of the channel.

b. **Steel Framing Members*** — used to attach furring channels (Item a) to studs (Item 1). Clips spaced 48 in. OC., and secured to studs with 1-5/8 in. wafer or hex head Type S steel screw through the center grommet. Furring channels are friction fitted into clips.

PAC INTERNATIONAL INC — Type RSIC-1.

3B. **Steel Framing Members*** — Optional - Not Shown - Used as an alternate method to attach resilient channels (Item 3). Clips attached at each intersection of the resilient channel and the steel studs (Item 1). Resilient channels are friction fitted into clips, and then clips are secured to the stud with min. 1 in. long Type S-12 pan head steel screws through the center hole of the clip and the resilient channel flange.

KEENE BUILDING PRODUCTS CO INC — Type RC Assurance.

4. **Batts and Blankets** — Placed in stud cavity, 1-1/2 in. min thickness.

THERMAFIBER INC — Type SAFB.

5. **Gypsum Board** — 1/2 or 5/8 in. thick, 4 ft wide. Screw attached one side to resilient or furring channels with 1 in. long, Type S steel screws spaced 12 in. OC. Wallboard on direct attached side secured to studs with 1 in. long Type S-12 steel screws spaced 12 in. Wallboard joints oriented vertically, located over studs and offset between layers.

AMERICAN GYPSUM CO — Type AG-C.

CERTAINTED GYPSUM INC — 1/2 in. or 5/8 in. ProRoc Type C.

CERTAINTED GYPSUM CANADA INC — 1/2 in. or 5/8 in. ProRoc Type C.

CANADIAN GYPSUM COMPANY — 1/2 in. Type C, IP-X2, IPC-AR or WRC, 5/8 in. Type AR, IP-AR, IP-X1 or SCX.

GEORGIA-PACIFIC GYPSUM L L C — Types 5, C, , DAP, DA.

LAFARGE NORTH AMERICA INC — Type LGFC-C, LGFC-C/A.

NATIONAL GYPSUM CO — Types FSK-C, FSW-C, FSMR-C.

PABCO BUILDING PRODUCTS L L C, DBA

PABCO GYPSUM — Type C or PG-C.

PANEL REY S A — Type PRC

TEMPLE-INLAND FOREST PRODUCTS CORP — Type TG-C.

UNITED STATES GYPSUM CO — 1/2 in. Type C, IP-X2, IPC-AR or WRC, 5/8 in. Type AR, IP-AR, IP-X1 or SCX.

USG MEXICO S A DE C V — 1/2 in. Type C, IP-X2, IPC-AR or WRC; 5/8 in. Type AR, IP-AR, IP-X1 or SCX.

5A. **Gypsum Board*** — (As an alternate to Item 5) — Nom 3/4 in. thick, 4 ft wide, installed as described in Item 5 with screw length increased to 1-1/4 in.

CANADIAN GYPSUM COMPANY — Types AR, IP-AR.

UNITED STATES GYPSUM CO — Types AR, IP-AR.

USG MEXICO S A DE C V — Types AR, IP-AR.

6. **Joint Tape and Compound** — Vinyl, dry or premixed joint compound, applied to joints and screw heads; paper tape, 2 in. wide, embedded in first layer of compound over all joints. As an alternate, nom 3/32 in. thick gypsum veneer plaster may be applied to the entire surface of Classified veneer baseboard. Joints reinforced.

7. **Caulking and Sealants*** — (Optional, not shown) — A bead of acoustical sealant applied around the partition perimeter for sound control.

ITW TACC — Type SCS-200

UNITED STATES GYPSUM CO — Type AS.

8. **Wall and Partition Facings and Accessories*** — (Optional, Not shown) — Nominal 1/2 in. thick, 4 ft wide panels, for optional use as an additional layer on one or both sides of the assembly. Panels attached in accordance with manufacturer's recommendations. When the QR-510 panel is installed between the steel framing and the UL Classified gypsum board, the required UL Classified gypsum board layer(s) is/are to be installed as indicated as to fastener type and spacing, except that the required fastener length shall be increased by a minimum of 1/2 in. Not evaluated or intended as a substitute for the required layer(s) of UL Classified Gypsum Board.

QUIET SOLUTION INC — Type QuietRock QR-510.

*Bearing the UL Classification Mark

Last Updated on 2009-03-23

[Questions?](#)

[Notice of Disclaimer](#)

[Page Top](#)

Copyright © 2009 Underwriters Laboratories Inc.®

The appearance of a company's name or product in this database does not in itself assure that products so identified have been manufactured under UL's Follow-Up Service. Only those products bearing the UL Mark should be considered to be Listed and covered under UL's Follow-Up Service. Always look for the Mark on the product.

UL permits the reproduction of the material contained in the Online Certification Directory subject to the following conditions: 1. The Guide Information, Designs and/or Listings (files) must be presented in their entirety and in a non-misleading manner, without any manipulation of the data (or drawings). 2. The statement "Reprinted from the Online Certifications Directory with permission from Underwriters Laboratories Inc." must appear adjacent to the extracted material. In addition, the reprinted material must include a copyright notice in the following format: "Copyright © 2009 Underwriters Laboratories Inc.®"

An independent organization working for a safer world with integrity, precision and knowledge.

