



## BXUV.U454 Fire Resistance Ratings - ANSI/UL 263

Page Bottom

### Design/System/Construction/Assembly Usage Disclaimer

- Authorities Having Jurisdiction should be consulted in all cases as to the particular requirements covering the installation and use of UL Listed or Classified products, equipment, system, devices, and materials.
- Authorities Having Jurisdiction should be consulted before construction.
- Fire resistance assemblies and products are developed by the design submitter and have been investigated by UL for compliance with applicable requirements. The published information cannot always address every construction nuance encountered in the field.
- When field issues arise, it is recommended the first contact for assistance be the technical service staff provided by the product manufacturer noted for the design. Users of fire resistance assemblies are advised to consult the general Guide Information for each product category and each group of assemblies. The Guide Information includes specifics concerning alternate materials and alternate methods of construction.
- Only products which bear UL's Mark are considered as Classified, Listed, or Recognized.

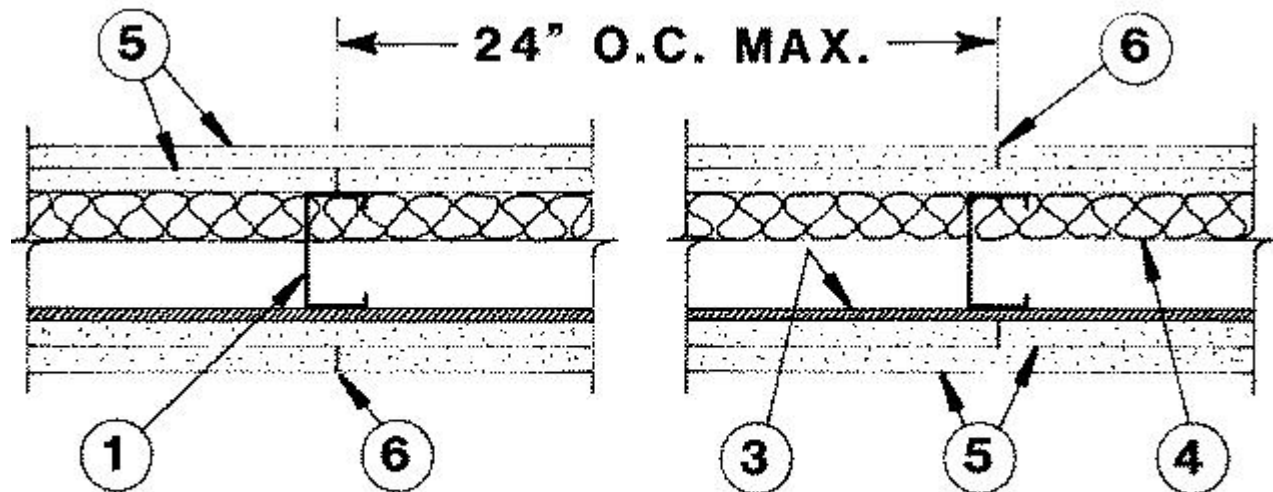
### Fire Resistance Ratings - ANSI/UL 263

See General Information for Fire Resistance Ratings - ANSI/UL 263

Design No. U454

March 23, 2009

Nonbearing Wall Rating — 2 HR.



### HORIZONTAL SECTION

1. **Studs** — Channel-shaped 2-1/2 in. wide by 1-1/4 in. deep with 5/16 in. folded back return flange legs. Fabricated from No. 25 MSG galv steel. Max stud spacing 24 in. OC. Studs to be cut 1 in. less than assembly height.

1A. **Framing Members - Metal Studs\*** — Not shown - In lieu of Item 1 — For use with Item 2A, proprietary channel shaped steel studs, 1-1/4 in. deep by 2-1/2 in. wide fabricated from min 0.0200 in. thick galv steel. Studs 1 in. less in lengths than assembly heights. Max stud spacing 24 in. OC.

**MARINO\WARE A DIV OF WARE INDUSTRIES**

**INC** — Viper20S™, Viper20D™

2. **Floor and Ceiling Runners (Not Shown)** — Channel-shaped runners, 2-1/2 in. wide by 1-1/4 in. deep, fabricated from No. 25 MSG galv steel. Attached to floor and ceiling with fasteners, 24 in. OC, max.

2A. **Framing Members - Floor and Ceiling Runner\*** — Not shown - In lieu of Item 2 — For use with Item 1A, proprietary channel shaped runners, 1-1/4 in. deep by 2-1/2 in. wide fabricated from min 0.0200 in. thick galv steel, attached to floor and ceiling with fasteners spaced 24 in. OC max.

**MARINO\WARE A DIV OF WARE INDUSTRIES**

**INC** — Viper20S™ Track, Viper20D™ Track

3. **Furring Channel** — Resilient 25 MSG galv steel furring channels spaced vertically max 24 in. OC, flange portion attached to each intersecting stud with 1/2 in. long type S-12 pan head steel screws.

4. **Batts and Blankets\*** — Min 1 in. thick mineral wool attached to base layer of wallboard which is directly attached to steel studs. Fasten each batt with min 9/16 in. long staples. Use five staples for each 4 ft long piece. Drive one staple in the center of each piece and a staple at each corner, approx 3 in. from edges.

**THERMAFIBER INC** — Type SAFB.

5. **Gypsum Board** — 1/2 in. thick, 4 ft wide. Attached to furring channels, base layer with 1 in. type S steel screws spaced 24 in. OC, face layer with 1-5/8 in. Type S screws spaced 12 in. OC. Wallboard on direct attached side, base layer attached with 1 in. long type S-12 steel screws 24 in. OC, face layer attached with 1-5/8 in. type S-12 steel screws spaced 12 in. OC. Wallboard joints oriented vertically, located over studs and offset between layers.

**AMERICAN GYPSUM CO** — Types AG-C.

**CERTAINTED GYPSUM INC** — ProRoc Type C.

**CERTAINTED GYPSUM CANADA INC** — ProRoc Type C.

**CANADIAN GYPSUM COMPANY** — Type C, IP-X2, IPC-AR or WRC.

**GEORGIA-PACIFIC GYPSUM L L C** — Type 5.

**LAFARGE NORTH AMERICA INC** — Type LGFC-C, LGFC-C/A .

**NATIONAL GYPSUM CO** — Types FSK-C, FSW-C, FSMR-C.

**PABCO BUILDING PRODUCTS L L C, DBA**

**PABCO GYPSUM** — Type PG-C.

**PANEL REY S A** — Type PRC

**TEMPLE-INLAND FOREST PRODUCTS CORP** — Type TG-C.

**UNITED STATES GYPSUM CO** — Type C, IP-X2, IPC-AR or WRC.

**USG MEXICO S A DE C V** — Type C, IP-X2, IPC-AR or WRC.

5A. **Gypsum Board\*** — (As an alternate to Item 5) — 5/8 in. thick, 4 ft wide. Attached to furring channels and steel studs as described in Item 5.

**CANADIAN GYPSUM COMPANY** — Type AR, IP-AR or SCX.

**NATIONAL GYPSUM CO** — Type FR or FSMR-C.

**UNITED STATES GYPSUM CO** — Type AR, IP-AR or SCX.

**USG MEXICO S A DE C V** — Type AR, IP-AR or SCX.

**5B. Gypsum Board\*** — (As an alternate to Item 5) — Nom 3/4 in. thick, 4 ft wide, installed as described in Item 5 with screw length increased to 1-1/4 in. for base layer and 2-1/4 in. for face layer.

**CANADIAN GYPSUM COMPANY** — Types AR, IP-AR.

**UNITED STATES GYPSUM CO** — Types AR, IP-AR.

**USG MEXICO S A DE C V** — Types AR, IP-AR.

**6. Joint Tape and Compound** — Vinyl, dry or premixed joint compound, applied to joints and screw heads; paper tape, 2 in. wide, embedded in first layer of compound over all joints. As an alternate, nom 3/32 in. thick gypsum veneer plaster may be applied to the entire surface of Classified veneer baseboard. Joints reinforced.

**7. Caulking and Sealants\*** — (Optional, not shown) — A bead of acoustical sealant applied around the partition perimeter for sound control.

**ITW TACC** — Type SCS-200

**UNITED STATES GYPSUM CO** — Type AS.

\*Bearing the UL Classification Mark

Last Updated on 2009-03-23

[Questions?](#)

[Notice of Disclaimer](#)

[Page Top](#)

Copyright © 2009 Underwriters Laboratories Inc.®

The appearance of a company's name or product in this database does not in itself assure that products so identified have been manufactured under UL's Follow-Up Service. Only those products bearing the UL Mark should be considered to be Listed and covered under UL's Follow-Up Service. Always look for the Mark on the product.

UL permits the reproduction of the material contained in the Online Certification Directory subject to the following conditions: 1. The Guide Information, Designs and/or Listings (files) must be presented in their entirety and in a non-misleading manner, without any manipulation of the data (or drawings). 2. The statement "Reprinted from the Online Certifications Directory with permission from Underwriters Laboratories Inc." must appear adjacent to the extracted material. In addition, the reprinted material must include a copyright notice in the following format: "Copyright © 2009 Underwriters Laboratories Inc.®"

An independent organization working for a safer world with integrity, precision and knowledge.

