



BXUV.U466 Fire Resistance Ratings - ANSI/UL 263

Page Bottom

Design/System/Construction/Assembly Usage Disclaimer

- Authorities Having Jurisdiction should be consulted in all cases as to the particular requirements covering the installation and use of UL Listed or Classified products, equipment, system, devices, and materials.
- Authorities Having Jurisdiction should be consulted before construction.
- Fire resistance assemblies and products are developed by the design submitter and have been investigated by UL for compliance with applicable requirements. The published information cannot always address every construction nuance encountered in the field.
- When field issues arise, it is recommended the first contact for assistance be the technical service staff provided by the product manufacturer noted for the design. Users of fire resistance assemblies are advised to consult the general Guide Information for each product category and each group of assemblies. The Guide Information includes specifics concerning alternate materials and alternate methods of construction.
- Only products which bear UL's Mark are considered as Classified, Listed, or Recognized.

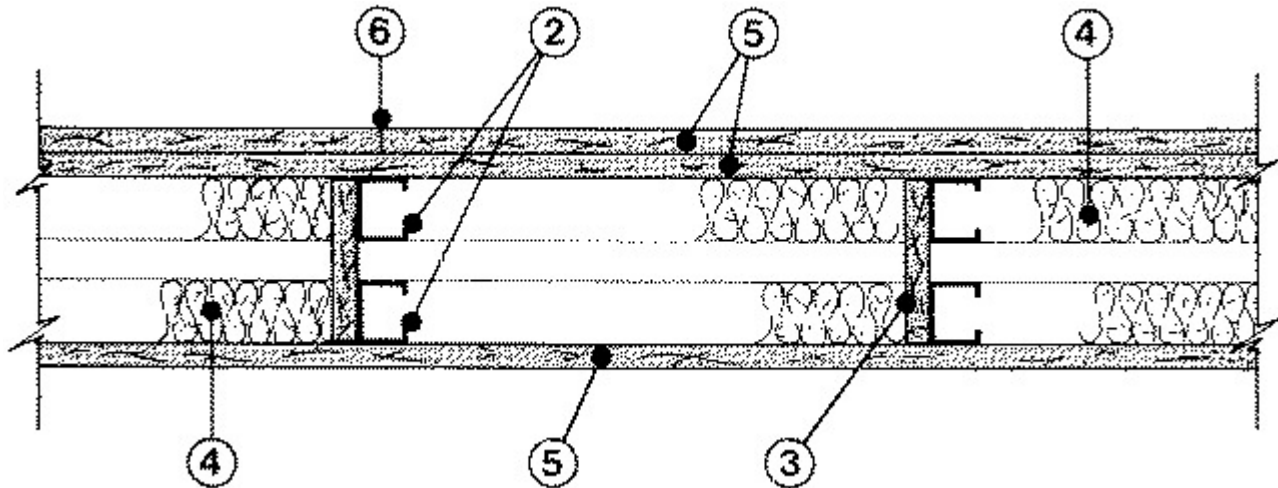
Fire Resistance Ratings - ANSI/UL 263

[See General Information for Fire Resistance Ratings - ANSI/UL 263](#)

Design No. U466

March 23, 2009

Nonbearing Wall Rating — 1 HR.



1. **Floor and Ceiling Runner** — (not shown) — Channel-shaped runners, 1-5/8 in. wide by 1 in. deep fabricated from 25 MSG galv steel. Attached to floor and ceiling with fasteners, 24 in. OC, max.

1A. **Framing Members - Floor and Ceiling Runner*** — Not shown - In lieu of Item 1 — For use with Item 2A, proprietary channel shaped runners, 1-1/4 in. deep by 1-5/8 in. wide fabricated from min 0.0200 in. thick galv steel, attached to floor and ceiling with fasteners spaced 24 in. OC max.

MARINO\WARE A DIV OF WARE INDUSTRIES

INC — Viper20S™ Track, Viper20D™ Track

2. **Studs** — Channel-shaped, 1-5/8 in. wide by 1-1/4 in. deep with 1/4 in. folded back return flange legs. Fabricated from 25 MSG galv steel. Max stud spacing 24 in. OC.

2A. **Framing Members - Metal Studs*** — Not shown - In lieu of Item 2 — For use with Item 1A, proprietary channel shaped steel studs, 1-1/4 in. deep by 1-5/8 in. wide fabricated from min 0.0200 in. thick galv steel. Studs

3/8 in. less in lengths than assembly heights. Max stud spacing 24 in. OC.

MARINO\WARE A DIV OF WARE INDUSTRIES

INC — Viper20S™, Viper20D™

3. **Bracing** — Two Types — Cut from steel runners or studs, cavity width. Fastened with two 1/2 in. long, Type S steel screws in each stud, space braces max 48 in. OC. As an alternate bracing cut from gypsum wallboard, length equal to stud cavity width and 6 in. wide. Fasten with two 1 in. long, Type S steel screws (1-1/4 in. long if Item 5A is used) in each stud, space braces max 48 in. OC.

4. **Batts and Blankets*** — (Optional) Mineral wool or glass fiber batts, partially or completely filling stud cavity. See Batts and Blankets (BZJZ) category for names of manufacturers.

4A. **Fiber, Sprayed*** — As an alternate to Batts and Blankets (Item 4) — Spray applied cellulose material. The fiber is applied with water to completely fill the enclosed cavity in accordance with the application instructions supplied with the product. Nominal dry density of 3.0 lb/ft³. Alternate application method: The fiber is applied with U.S. Greenfiber LLC Type AD100 hot melt adhesive at a nominal ratio of one part adhesive to 6.6 parts fiber to completely fill the enclosed cavity in accordance with the application instructions supplied with the product. Nominal dry density of 2.5 lb/ft³.

U S GREENFIBER L L C — Cocoon2 Stabilized or Cocoon-FRM (Fire Rated Material)

4B. **Fiber, Sprayed*** — As an alternate to Batts and Blankets (Item 4) and Item 4A - Spray applied cellulose insulation material. The fiber is applied with water to interior surfaces in accordance with the application instructions supplied with the product. Applied to completely fill the enclosed cavity. Minimum dry density of 4.3 pounds per cubic ft.

NU-WOOL CO INC — Cellulose Insulation

5. **Gypsum Board*** — 5/8 in. thick. Screw attached, single layer side with 1 in. long, Type S steel screws spaced 12 in. OC. Wallboard on double layer side, base layer attached with 1 in. long, Type S steel screws spaced 24 in. OC, face layer attached with 1-5/8 in. long, Type S steel screws spaced 12 in. OC. Wallboard joints oriented vertical or horizontal, with or without offset. Butt joints located over studs.

AMERICAN GYPSUM CO — Types AGX-1, AG-C.

BEIJING NEW BUILDING MATERIALS PUBLIC

LTD CO — Type DBX-1.

CANADIAN GYPSUM COMPANY — Types AR, C, IP-AR, IP-X1, IP-X2, IPC-AR, SCX, SHX, WRC or WRX.

CERTAINTED GYPSUM INC — Types EGRG or ProRoc Type C.

CERTAINTED GYPSUM CANADA INC — ProRoc Type C.

GEORGIA-PACIFIC GYPSUM L L C — Types 5, C, DAPC.

LAFARGE NORTH AMERICA INC — Types LGFC-C, LGFC-C/A, LGFC6, LGFC6A.

NATIONAL GYPSUM CO — Types FSK, FSK-C, FSW, FSW-5, FSW-6 or FSW-C.

PABCO BUILDING PRODUCTS L L C, DBA

PABCO GYPSUM — Type C, PG-11 or PG-C.

PANEL REY S A — Type PRX.

SIAM GYPSUM INDUSTRY (SARABURI) CO LTD — Type EX-1

TEMPLE-INLAND FOREST PRODUCTS CORP — Type TG-C, Type X, Veneer Plaster Base-Type X, Water Rated-Type X, Sheathing Type-X, Soffit-Type X.

UNITED STATES GYPSUM CO — Type AR, C, FRX-G, IP-AR, IP-X1, IP-X2, IPC-AR, SCX, SHX, WRC, WRX, USGX (Joint tape and compound, Item 6, optional for use with Type USGX)

USG MEXICO S A DE C V — Type AR, C, IP-AR, IP-X1, IP-X2, IPC-AR, SCX, SHX, WRC or WRX.

5A. Gypsum Board* — (As an alternate to Item 5) — Nom 3/4 in. thick, installed as described in Item 5 with screw length increased to 1-1/4 in. for base layer and 2-1/4 in. for face layer.

CANADIAN GYPSUM COMPANY — Types AR, IP-AR

UNITED STATES GYPSUM CO — Types AR, IP-AR.

USG MEXICO S A DE C V — Types AR, IP-AR.

5B. Gypsum Board* — (As an alternate to Items 5 and 5A) - 5/8 in. thick, 2 ft wide, tongue and groove edge, applied horizontally to one side of the assembly (as the outer layer on the two layer side). Secured as described in Item 5. Joint covering (Item 6) not required.

CANADIAN GYPSUM COMPANY — Type SHX.

UNITED STATES GYPSUM CO — Type SHX.

USG MEXICO S A DE C V — Type SHX.

6. Joint Tape and Compound — Vinyl, dry or premixed joint compound, applied in two coats to joints and screw heads; paper tape, 2 in. wide, embedded in first layer of compound over all joints. As an alternate, nominal 3/32 in. thick gypsum veneer plaster may be applied to the entire surface of classified veneer base board. Joints reinforced.

7. Caulking and Sealants* — (Optional, not shown) — A bead of acoustical sealant applied around the partition perimeter for sound control.

ITW TACC — Type SCS-200

UNITED STATES GYPSUM CO — Type AS.

*Bearing the UL Classification Mark

Last Updated on 2009-03-23

[Questions?](#)

[Notice of Disclaimer](#)

[Page Top](#)

Copyright © 2009 Underwriters Laboratories Inc.®

The appearance of a company's name or product in this database does not in itself assure that products so identified have been manufactured under UL's Follow-Up Service. Only those products bearing the UL Mark should be considered to be Listed and covered under UL's Follow-Up Service. Always look for the Mark on the product.

UL permits the reproduction of the material contained in the Online Certification Directory subject to the following conditions: 1. The Guide Information, Designs and/or Listings (files) must be presented in their entirety and in a non-misleading manner, without any manipulation of the data (or drawings). 2. The statement "Reprinted from the Online Certifications Directory with permission from Underwriters Laboratories Inc." must appear adjacent to the extracted material. In addition, the reprinted material must include a copyright notice in the following format: "Copyright © 2009 Underwriters Laboratories Inc.®"

An independent organization working for a safer world with integrity, precision and knowledge.

