



## BXUV.U471 Fire Resistance Ratings - ANSI/UL 263

Page Bottom

### Design/System/Construction/Assembly Usage Disclaimer

- Authorities Having Jurisdiction should be consulted in all cases as to the particular requirements covering the installation and use of UL Listed or Classified products, equipment, system, devices, and materials.
- Authorities Having Jurisdiction should be consulted before construction.
- Fire resistance assemblies and products are developed by the design submitter and have been investigated by UL for compliance with applicable requirements. The published information cannot always address every construction nuance encountered in the field.
- When field issues arise, it is recommended the first contact for assistance be the technical service staff provided by the product manufacturer noted for the design. Users of fire resistance assemblies are advised to consult the general Guide Information for each product category and each group of assemblies. The Guide Information includes specifics concerning alternate materials and alternate methods of construction.
- Only products which bear UL's Mark are considered as Classified, Listed, or Recognized.

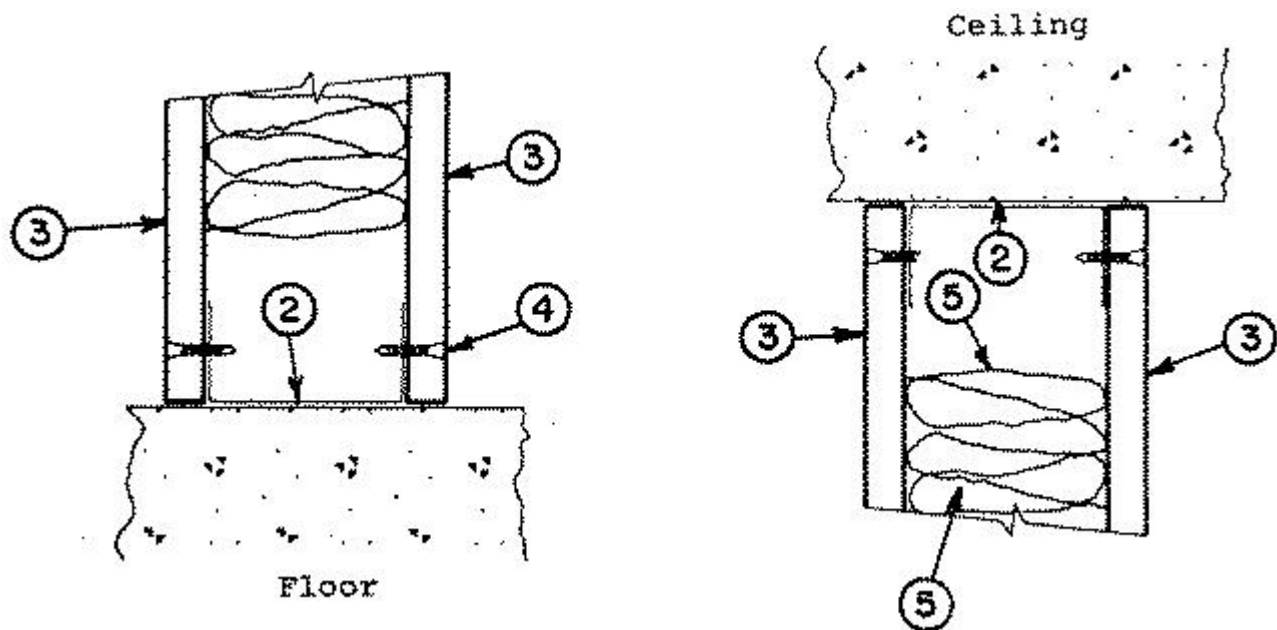
### Fire Resistance Ratings - ANSI/UL 263

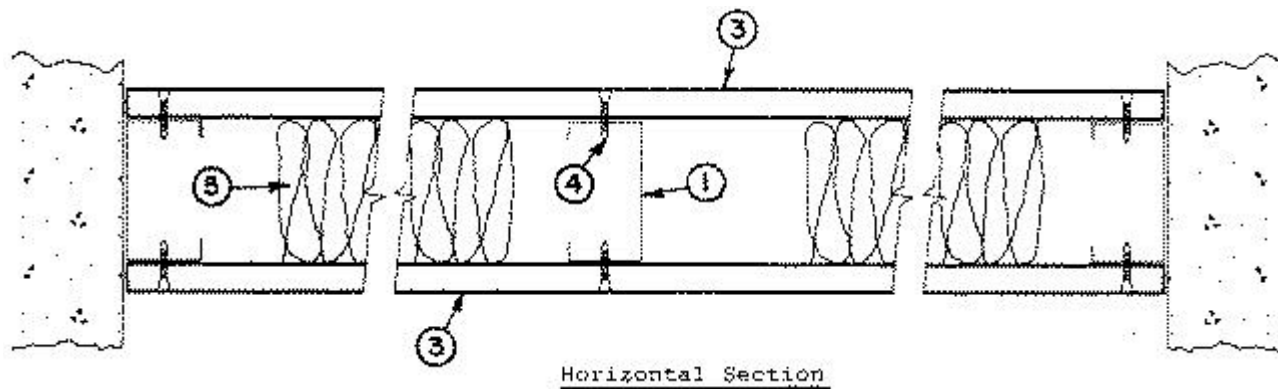
[See General Information for Fire Resistance Ratings - ANSI/UL 263](#)

Design No. U471

March 23, 2009

Nonbearing Wall Rating — 1-1/2 HR.





1. **Studs** — Channel-shaped, nom 3-5/8 in. wide with 1-1/4 in. flanges and 3/8 in. lips. Fabricated from No. 25 MSG galv steel. Max stud spacing is 24 in. OC. Stud length cut 3/4 in. less than assembly height.

1A. **Framing Members - Metal Studs\*** — Not shown - In lieu of Item 1 — For use with Item 2A, proprietary channel shaped steel studs, 1-1/4 in. deep by 3-5/8 in. wide fabricated from min 0.0200 in. thick galv steel. Studs 3/4 in. less in lengths than assembly heights. Max stud spacing is 24 in. OC.

#### MARINO\WARE A DIV OF WARE INDUSTRIES

INC — Viper20S™, Viper20D™

2. **Floor and Ceiling Runners** — Channel-shaped, 3-5/8 in. wide with 1-1/8 in. flanges, fabricated from No. 25 MSG galv steel. Attached to floor and ceiling with runners fasteners 24 in. OC, max.

2A. **Framing Members - Floor and Ceiling Runner\*** — Not shown - In lieu of Item 2 — For use with Item 1A, proprietary channel shaped runners, 1-1/4 in. deep by 3-5/8 in. wide fabricated from min 0.0200 in. thick galv steel, attached to floor and ceiling with fasteners spaced 24 in. OC max.

#### MARINO\WARE A DIV OF WARE INDUSTRIES

INC — Viper20S™ Track, Viper20D™ Track

3. **Mineral and Fiber Boards\*** — 0.591 in. (15 mm) thick, square edge boards. Board joints centered on studs. Attached to studs and floor and ceiling runners with screws, (Item 4). Max spacing of screws along the board perimeter and in the field is 12 in. OC. Screws along joints spaced 5/16 in. to 3/8 in. from the joint and staggered a min of 1-3/4 in. from the screws on the opposite side of the joints.

PROMAT UK LTD — PROMAT-H.

4. **Fasteners** — Type S, bugle-head steel screws, self-drilling and self-tapping, 1-5/8 in. long.

5. **Batts and Blankets\*** — Min 3-1/4 in. thick mineral wool batt insulation, nom 4 pcf density.

5A. **Fiber, Sprayed\*** — As an alternate to Batts and Blankets (Item 5) — Spray applied cellulose material. The fiber is applied with water to completely fill the enclosed cavity in accordance with the application instructions supplied with the product. Nominal dry density of 3.0 lb/ft<sup>3</sup>. Alternate application method: The fiber is applied with U.S. Greenfiber LLC Type AD100 hot melt adhesive at a nominal ratio of one part adhesive to 6.6 parts fiber to completely fill the enclosed cavity in accordance with the application instructions supplied with the product. Nominal dry density of 2.5 lb/ft<sup>3</sup>.

U S GREENFIBER L L C — Cocoon2 Stabilized or Cocoon-FRM (Fire Rated Material)

\*Bearing the UL Classification Mark

Last Updated on 2009-03-23

[Questions?](#)

[Notice of Disclaimer](#)

[Page Top](#)

Copyright © 2009 Underwriters Laboratories Inc.®

The appearance of a company's name or product in this database does not in itself assure that products so identified have been manufactured under UL's Follow-Up Service. Only those products bearing the UL Mark should be considered to be Listed and covered under UL's Follow-Up Service. Always look for the Mark on the product.

UL permits the reproduction of the material contained in the Online Certification Directory subject to the following conditions: 1. The Guide Information, Designs and/or Listings (files) must be presented in their entirety and in a non-misleading manner, without any manipulation of the data (or drawings). 2. The statement "Reprinted from the Online Certifications Directory with permission from Underwriters Laboratories Inc." must appear adjacent to the extracted material. In addition, the reprinted material must include a copyright notice in the following format: "Copyright © 2009 Underwriters Laboratories Inc.®"

An independent organization working for a safer world with integrity, precision and knowledge.

