



## BXUV.U491 Fire Resistance Ratings - ANSI/UL 263

Page Bottom

### Design/System/Construction/Assembly Usage Disclaimer

- Authorities Having Jurisdiction should be consulted in all cases as to the particular requirements covering the installation and use of UL Listed or Classified products, equipment, system, devices, and materials.
- Authorities Having Jurisdiction should be consulted before construction.
- Fire resistance assemblies and products are developed by the design submitter and have been investigated by UL for compliance with applicable requirements. The published information cannot always address every construction nuance encountered in the field.
- When field issues arise, it is recommended the first contact for assistance be the technical service staff provided by the product manufacturer noted for the design. Users of fire resistance assemblies are advised to consult the general Guide Information for each product category and each group of assemblies. The Guide Information includes specifics concerning alternate materials and alternate methods of construction.
- Only products which bear UL's Mark are considered as Classified, Listed, or Recognized.

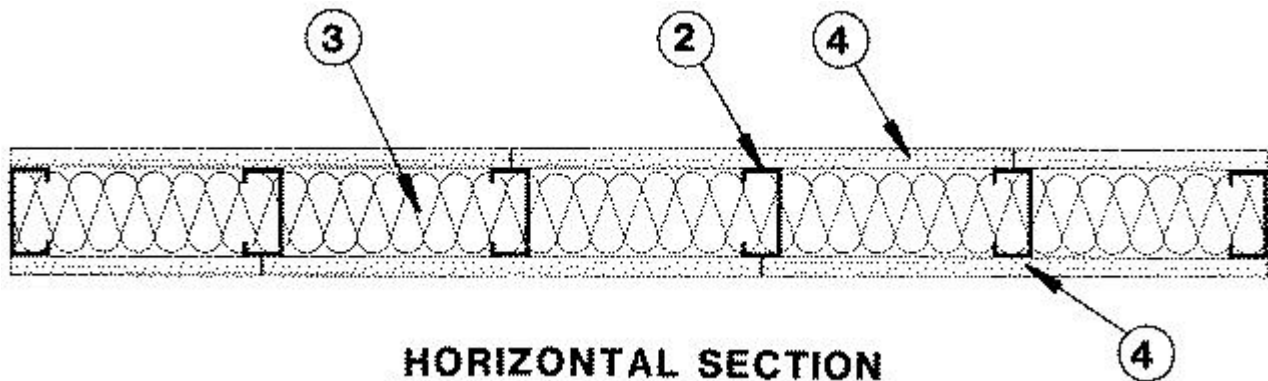
### Fire Resistance Ratings - ANSI/UL 263

[See General Information for Fire Resistance Ratings - ANSI/UL 263](#)

Design No. U491

March 23, 2009

Nonbearing Wall Rating — 2 HR.



1. **Floor and Ceiling Runner** — (Not Shown) — Channel shaped, fabricated from min No. 25 MSG galv steel, 1 in. deep and 3-1/2 in. wide. Attached to floor and ceiling with steel fasteners spaced 24 in. OC.

1A. **Framing Members - Floor and Ceiling Runner\*** — Not shown - In lieu of Item 1 — For use with Item 2A, proprietary channel shaped runners, 1-1/4 in. deep by 3-1/2 in. wide fabricated from min 0.0200 in. thick galv steel, attached to floor and ceiling with fasteners spaced 24 in. OC max.

**MARINO\WARE A DIV OF WARE INDUSTRIES**

**INC** — Viper20S™ Track, Viper20D™ Track

2. **Steel Studs** — Channel shaped, min 3-1/2 in. wide by 1-1/4 in. deep with 1/4 in. folded back return flange legs. Fabricated from min No. 25 MSG galv steel. Max stud spacing 24 in. OC. Studs to be cut 3/4 in. less than assembly height. Steel studs friction-fitted into floor and ceiling runners (Item 1).

2A. **Framing Members - Metal Studs\*** — Not shown - In lieu of Item 2 — For use with Item 1A, proprietary channel shaped steel studs, 1-1/4 in. deep by 3-1/2 in. wide fabricated from min 0.0200 in. thick galv steel. Studs 3/4 in. less in lengths than assembly heights. Max stud spacing 24 in. OC.

**MARINO\WARE A DIV OF WARE INDUSTRIES**

**INC** — Viper20S™, Viper20D™

3. **Batts and Blankets\*** — Nom 3 in. thick mineral wool batts, friction fitted between the studs and floor and ceiling runners.

**THERMAFIBER INC** — Type SAFB.

4. **Gypsum Board\*** — 3/4 in. thick, 4 ft wide. One layer of wallboard to be applied vertically on each side with joints centered over studs and staggered on opposite sides of studs. Wallboard secured with 1-1/4 in. long Type S self-drilling, self-tapping steel screws spaced 8 in. OC along the perimeter and 12 in. OC in the field. Screws along side joints offset 4 in.

**CANADIAN GYPSUM COMPANY** — Type IP-X3 or ULTRACODE

**UNITED STATES GYPSUM CO** — Type IP-X3 or ULTRACODE

**USG MEXICO S A DE C V** — Type IP-X3 or ULTRACODE

5. **Joint Tape and Compound** — (Not Shown) — Joints covered with joint compound and paper or mesh tape. Screw heads covered with joint compound.

\*Bearing the UL Classification Mark

Last Updated on 2009-03-23

[Questions?](#)

[Notice of Disclaimer](#)

[Page Top](#)

[Copyright © 2009 Underwriters Laboratories Inc.®](#)

The appearance of a company's name or product in this database does not in itself assure that products so identified have been manufactured under UL's Follow-Up Service. Only those products bearing the UL Mark should be considered to be Listed and covered under UL's Follow-Up Service. Always look for the Mark on the product.

UL permits the reproduction of the material contained in the Online Certification Directory subject to the following conditions: 1. The Guide Information, Designs and/or Listings (files) must be presented in their entirety and in a non-misleading manner, without any manipulation of the data (or drawings). 2. The statement "Reprinted from the Online Certifications Directory with permission from Underwriters Laboratories Inc." must appear adjacent to the extracted material. In addition, the reprinted material must include a copyright notice in the following format: "Copyright © 2009 Underwriters Laboratories Inc.®"

An independent organization working for a safer world with integrity, precision and knowledge.

