



BXUV.V419 Fire Resistance Ratings - ANSI/UL 263

Page Bottom

Design/System/Construction/Assembly Usage Disclaimer

- Authorities Having Jurisdiction should be consulted in all cases as to the particular requirements covering the installation and use of UL Listed or Classified products, equipment, system, devices, and materials.
- Authorities Having Jurisdiction should be consulted before construction.
- Fire resistance assemblies and products are developed by the design submitter and have been investigated by UL for compliance with applicable requirements. The published information cannot always address every construction nuance encountered in the field.
- When field issues arise, it is recommended the first contact for assistance be the technical service staff provided by the product manufacturer noted for the design. Users of fire resistance assemblies are advised to consult the general Guide Information for each product category and each group of assemblies. The Guide Information includes specifics concerning alternate materials and alternate methods of construction.
- Only products which bear UL's Mark are considered as Classified, Listed, or Recognized.

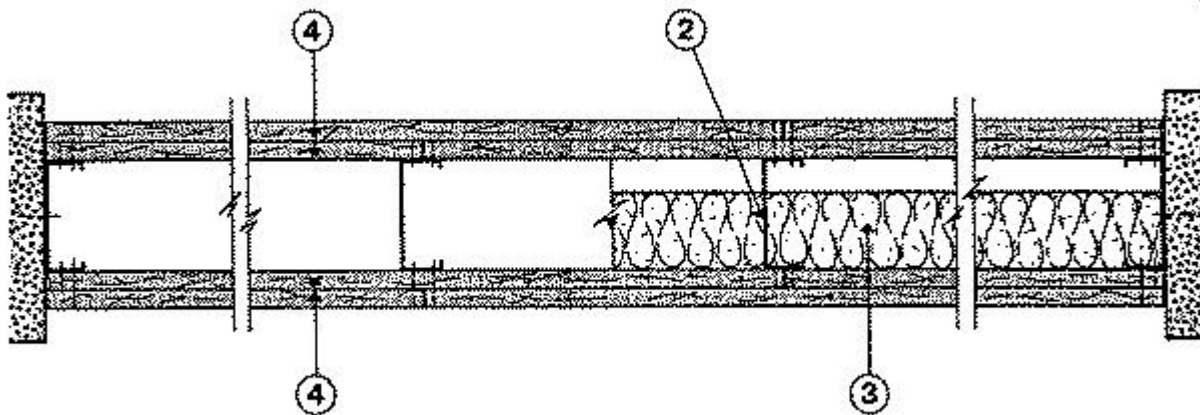
Fire Resistance Ratings - ANSI/UL 263

[See General Information for Fire Resistance Ratings - ANSI/UL 263](#)

Design No. V419

March 23, 2009

Nonbearing Wall Rating — 2 Hr



1. **Floor and Ceiling Runners** — (Not Shown) — 25 MSG (min) galv steel 1 in. high, return legs 2-1/2 in. wide (min), attached to floor and ceiling with fasteners 24 in. OC.

1A. **Framing Members - Floor and Ceiling Runner*** — Not shown - In lieu of Item 1 — For use with Item 2A, proprietary channel shaped runners, 1-1/4 in. deep by 2-1/2 in. wide fabricated from min 0.0200 in. thick galv steel, attached to floor and ceiling with fasteners spaced 24 in. OC max.

MARINO\WARE A DIV OF WARE INDUSTRIES

INC — Viper20S™ Track, Viper20D™ Track

2. **Steel Studs** — 2-1/2 in. wide (min), 1-1/4 in. legs, 3/8 in. return, formed of 25 MSG (min) galv steel max stud spacing 24 in. OC. Studs to be cut 3/4 in. less than assembly height.

2A. **Framing Members - Metal Studs*** — Not shown - In lieu of Item 2 — For use with Item 1A, proprietary

channel shaped steel studs, 1-1/4 in. deep by 2-1/2 in. wide fabricated from min 0.0200 in. thick galv steel. Studs 3/4 in. less in lengths than assembly heights.

MARINO\WARE A DIV OF WARE INDUSTRIES

INC — Viper20S™, Viper20D™

3. **Batts and Blankets*** — Mineral wool batts partially or completely filling stud cavity.

ROCK WOOL MANUFACTURING CO — Delta Board.

ROXUL ASIA SDN BHD

ROXUL INC

4. **Gypsum Board*** — 5/8 in. thick, outer layer paper, glass mat or vinyl surfaced. (Laminated System) Wallboard applied vertically in two layers. Inner layer attached to studs with 1 in. long Type S steel screws spaced 8 in. OC along vertical edges, and 12 in. OC in the field and outer layer laminated to inner layer with joint compound, applied with a notched spreader producing continuous beads of compound about 3/8 in. in diam spaced not greater than 2 in. OC. Joints of laminated outer layer offset 12 in. from inner layer joints. Outer layer wallboard attached to floor and ceiling runner track with 1-5/8 in. long Type S steel screws spaced 12 in. OC.

Optional, (Direct Attached System), Inner layer attached to studs with 1 in. long Type S steel screws spaced 16 in. OC in the field and along the vertical edges. Outer layer attached to the studs over the inner layer with 1-5/8 in. long Type S steel screws spaced 16 in. OC in the field and along the vertical edges and 12 in. OC to the floor and ceiling runners. Joints of screw-attached outer layer offset from inner layer joints. Joints of outer layer may be taped or untaped.

Nom 3/32 in. thick gypsum veneer plaster may be applied to the entire surface of Classified veneer baseboard. Joints reinforced.

AMERICAN GYPSUM CO — Types AG-C, AGX-1, AGX-11.

BEIJING NEW BUILDING MATERIALS PUBLIC

LTD CO — Type DBX-1

CANADIAN GYPSUM COMPANY — Type AR, C, FCV, IP-AR, IP-X1, IP-X2, IPC-AR, SCX, SHX, WRC or WRX

CERTAINTED GYPSUM INC — Types 1, FRPC, EGRG or ProRoc Type X.

CERTAINTED GYPSUM CANADA INC — ProRoc Type C, ProRoc Type X or ProRoc Type Abuse-Resistant.

GEORGIA-PACIFIC GYPSUM L L C — Types 5, 9, C, DAP, DD, DA, DAPC, DGG, DS, GPFS6

LAFARGE NORTH AMERICA INC — Types LGFC2, LGFC2A, LGFC6, LGFC6A, LGFC-C, LGFC-C/A.

NATIONAL GYPSUM CO — Types FSK-C, FSW, FSW-5, FSW-6, FSW-C, FSW-G

PABCO BUILDING PRODUCTS L L C, DBA

PABCO GYPSUM — Types C, PG-3, PG-5, PG-9, PG-11 or PG-C

PANEL REY S A — Type PRX.

SIAM GYPSUM INDUSTRY (SARABURI) CO LTD — Type EX-1

TEMPLE-INLAND FOREST PRODUCTS CORP — Type TG-C, Type X, Veneer Plaster Base - Type X, Water Rated - Type X, Sheathing - Type X, Soffit - Type X, GreenGlass Type X.

UNITED STATES GYPSUM CO — Type AR, C, FCV, IP-AR, IP-X1, IP-X2, IPC-AR, SCX, SHX, WRC, WRX, USGX

USG MEXICO S A DE C V — Type AR, C, FCV, IP-AR, IP-X1, IP-X2, IPC-AR, SCX, SHX, WRC or WRX

4A. Gypsum Board* — (As an alternate to item 4) — Nom 3/4 in. thick, installed as described in Item 4 with 1-1/4 in. long Type S screws for inner layer and 2-1/4 in. long Type S screws for outer layer.

CANADIAN GYPSUM COMPANY — Types AR, IP-AR

UNITED STATES GYPSUM CO — Types AR, IP-AR

USG MEXICO S A DE C V — Types AR, IP-AR

4B. Gypsum Board* — (As alternate to Item 4) - Horizontal Application - Base layer is attached to the studs, with 1 in. long Type-S bugle head screws, spaced 16 in. OC. The face layer attached to the studs with 1-5/8 in. long Type S bugle head screws spaced 16 in. OC. Horizontal joints need not be staggered on opposite faces or backed by steel framing. Face layer horizontal joints must be staggered a minimum 12 in. from the base layer when applied horizontally. Vertical application - base layer attached to the studs with 1 in. long Type-S bugle head screws, spaced 16 in. OC. The face layer attached to the studs with 1-5/8 in. long Type-S bugle head screws, spaced 16 in. OC. Vertical joints are centered over studs and staggered between layers and on opposite sides of the wall.

CERTAINTED GYPSUM INC — ProRoc Type X, ProRoc Type C.

CERTAINTED GYPSUM CANADA INC — ProRoc Type X, ProRoc Type C.

*Bearing the UL Classification Mark

Last Updated on 2009-03-23

[Questions?](#)

[Notice of Disclaimer](#)

[Page Top](#)

Copyright © 2009 Underwriters Laboratories Inc.®

The appearance of a company's name or product in this database does not in itself assure that products so identified have been manufactured under UL's Follow-Up Service. Only those products bearing the UL Mark should be considered to be Listed and covered under UL's Follow-Up Service. Always look for the Mark on the product.

UL permits the reproduction of the material contained in the Online Certification Directory subject to the following conditions: 1. The Guide Information, Designs and/or Listings (files) must be presented in their entirety and in a non-misleading manner, without any manipulation of the data (or drawings). 2. The statement "Reprinted from the Online Certifications Directory with permission from Underwriters Laboratories Inc." must appear adjacent to the extracted material. In addition, the reprinted material must include a copyright notice in the following format: "Copyright © 2009 Underwriters Laboratories Inc.®"

An independent organization working for a safer world with integrity, precision and knowledge.

