



## BXUV.V425 Fire Resistance Ratings - ANSI/UL 263

Page Bottom

### Design/System/Construction/Assembly Usage Disclaimer

- Authorities Having Jurisdiction should be consulted in all cases as to the particular requirements covering the installation and use of UL Listed or Classified products, equipment, system, devices, and materials.
- Authorities Having Jurisdiction should be consulted before construction.
- Fire resistance assemblies and products are developed by the design submitter and have been investigated by UL for compliance with applicable requirements. The published information cannot always address every construction nuance encountered in the field.
- When field issues arise, it is recommended the first contact for assistance be the technical service staff provided by the product manufacturer noted for the design. Users of fire resistance assemblies are advised to consult the general Guide Information for each product category and each group of assemblies. The Guide Information includes specifics concerning alternate materials and alternate methods of construction.
- Only products which bear UL's Mark are considered as Classified, Listed, or Recognized.

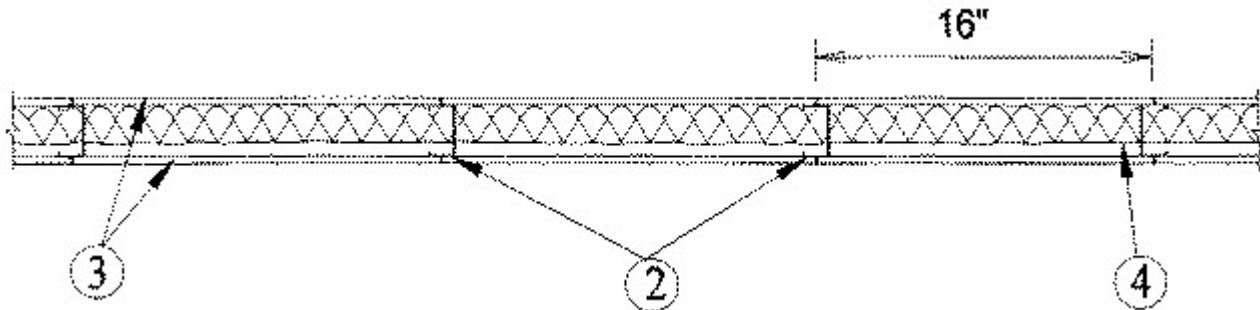
### Fire Resistance Ratings - ANSI/UL 263

[See General Information for Fire Resistance Ratings - ANSI/UL 263](#)

**Design No. V425**

March 23, 2009

**Nonbearing Wall Rating — 1 Hr**



**1. Floor and Ceiling Runners** — Channel-shaped runners, 2-1/2 in. wide with 1-3/8 in. deep legs, fabricated from No. 25 MSG galv steel, attached to concrete or masonry with fasteners 24 in. OC.

**1A. Framing Members - Floor and Ceiling Runner\*** — Not shown - In lieu of Item 1 — For use with Item 2A, proprietary channel shaped runners, 1-1/4 in. deep by 2-1/2 in. wide fabricated from min 0.0200 in. thick galv steel, attached to floor and ceiling with fasteners spaced 24 in. OC max.

**MARINO\WARE A DIV OF WARE INDUSTRIES**

**INC** — Viper20S™ Track, Viper20D™ Track

**2. Steel Studs** — Channel-shaped, min 2-1/2 in. wide by 1-1/4 in. deep with 1/4 in. folded back return flange legs, fabricated from No. 25 MSG galv steel. Max stud spacing 16 in. OC. Studs to be cut to 1/2 in. less assembly height. Studs to be friction fit into floor and ceiling runners (Item 1).

**2A. Framing Members - Metal Studs\*** — Not shown - In lieu of Item 2 — For use with Item 1A, proprietary channel shaped steel studs, 1-1/4 in. deep by 2-1/2 in. wide fabricated from min 0.0200 in. thick galv steel. Studs 1/2 in. less in lengths than assembly heights. Spaced 16 in. OC max.

**MARINO\WARE A DIV OF WARE INDUSTRIES**

**INC** — Viper20S™, Viper20D™

3. **Gypsum Board\*** — 5/8 in. thick, 4 ft wide wallboard attached to steel studs and floor and ceiling runners with 1-1/4 in. long self-drilling, self-tapping, bugle head steel screws spaced 8 in. OC along the edges of the board and 12 in. OC in the field of the board. Joints oriented vertically and staggered 24 in. on opposite sides of the assembly. Joints covered with paper tape and joint compound. Exposed screw heads covered with joint compound.

**NATIONAL GYPSUM CO** — Types FSK-C, FSW, FSW-5, FSW-6, FSW-C

4. **Sprayed Fiber\*** — Applied by spraying with water to a min untamped thickness of 1-1/2 in. within interior wall cavities. Minimum average density of 6.0 pcf with minimum individual density of 5.0 pcf. For method of density determination, refer to General Information Section.

**INTERNATIONAL CELLULOSE CORP** — CelBar Fiber

\*Bearing the UL Classification Mark

Last Updated on 2009-03-23

---

[Questions?](#)

[Notice of Disclaimer](#)

[Page Top](#)

[Copyright © 2009 Underwriters Laboratories Inc.®](#)

The appearance of a company's name or product in this database does not in itself assure that products so identified have been manufactured under UL's Follow-Up Service. Only those products bearing the UL Mark should be considered to be Listed and covered under UL's Follow-Up Service. Always look for the Mark on the product.

UL permits the reproduction of the material contained in the Online Certification Directory subject to the following conditions: 1. The Guide Information, Designs and/or Listings (files) must be presented in their entirety and in a non-misleading manner, without any manipulation of the data (or drawings). 2. The statement "Reprinted from the Online Certifications Directory with permission from Underwriters Laboratories Inc." must appear adjacent to the extracted material. In addition, the reprinted material must include a copyright notice in the following format: "Copyright © 2009 Underwriters Laboratories Inc.®"

*An independent organization working for a safer world with integrity, precision and knowledge.*

