



BXUV.V435 Fire Resistance Ratings - ANSI/UL 263

Page Bottom

Design/System/Construction/Assembly Usage Disclaimer

- Authorities Having Jurisdiction should be consulted in all cases as to the particular requirements covering the installation and use of UL Listed or Classified products, equipment, system, devices, and materials.
- Authorities Having Jurisdiction should be consulted before construction.
- Fire resistance assemblies and products are developed by the design submitter and have been investigated by UL for compliance with applicable requirements. The published information cannot always address every construction nuance encountered in the field.
- When field issues arise, it is recommended the first contact for assistance be the technical service staff provided by the product manufacturer noted for the design. Users of fire resistance assemblies are advised to consult the general Guide Information for each product category and each group of assemblies. The Guide Information includes specifics concerning alternate materials and alternate methods of construction.
- Only products which bear UL's Mark are considered as Classified, Listed, or Recognized.

Fire Resistance Ratings - ANSI/UL 263

[See General Information for Fire Resistance Ratings - ANSI/UL 263](#)

Design No. V435

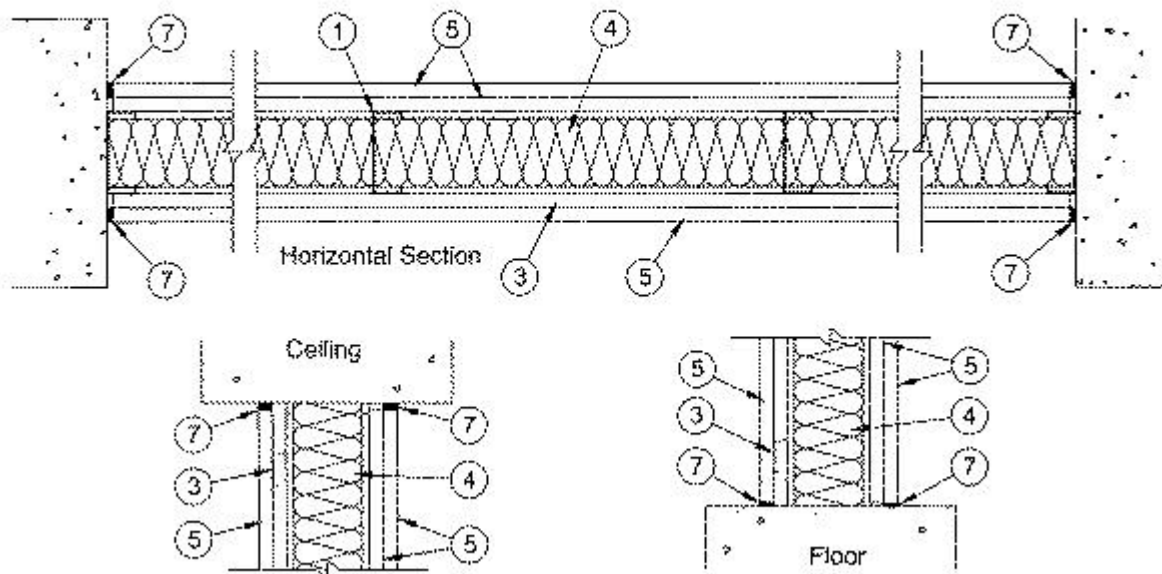
March 23, 2009

Nonbearing Wall Ratings- 1 Hr.

STC Rating-52

L Rating at Ambient- Less than 1 CFM/Lin Ft.

L Rating at 400 F- Less than 1 CFM/Lin Ft.



1. **Studs** — Channel-shaped, 3-5/8 in. wide by 1-1/4 in. deep with 5/16 in. folded back return flange legs. Fabricated from No. 25 MSG galv steel. Max stud spacing 24 in. OC. Studs to be cut 3/4 in. less than assembly height.

1A. **Framing Members - Metal Studs*** — Not shown - In lieu of Item 1 — For use with Item 2A, proprietary channel shaped steel studs, 1-1/4 in. deep by 3-5/8 in. wide fabricated from min 0.0200 in. thick galv steel. Studs 3/4 in. less in lengths than assembly heights.

MARINO\WARE A DIV OF WARE INDUSTRIES

INC — Viper20S™, Viper20D™

2. **Floor and Ceiling Runners** — (Not Shown)- Channel-shaped runners, 3-5/8 in. wide by 1-1/4 in. deep, fabricated from 25 MSG galv steel. Attached to floor and ceiling with fastners spaced max 24 in. OC.

2A. **Framing Members - Floor and Ceiling Runner*** — Not shown - In lieu of Item 2 — For use with Item 1A, proprietary channel shaped runners, 1-1/4 in. deep by 3-5/8 in. wide fabricated from min 0.0200 in. thick galv steel, attached to floor and ceiling with fasteners spaced 24 in. OC max.

MARINO\WARE A DIV OF WARE INDUSTRIES

INC — Viper20S™ Track, Viper20D™ Track

3. **Furring Channel** — Resilient 25 MSG galv steel furring channels installed on one side of wall and spaced vertically max 24 in. OC. Flange portion attached to floor and ceiling with fastners spaced max 24 in. OC.

4. **Batts and Blankers*** — Min 2.5 pcf density unfaced mineral wool batts supplied in 24 by 48 by 3 in. thick boards installed to completely fill each stud cavity. See **Batts and Blaners (BKNV and/or BZJZ)** categories for names of manufacturers.

5. **Gypsum Board*** — 5/8 in. thick, 4 ft wide. Screw-attahced to resilient furring channels on one side of wall with 1 in. long type S steel spaced 12 in. OC. On direct attahced side, base layer screw attached tp studs with 1in. long type S-12 steel screws spaced 16 in. OC and face layer screw attached to studs with 1-5/8 in. long type S-12 screws spaced 16 in. OC. Gypsum board joints oriented vertically, located over studs and offset between layers. Max gap at perimeter of partitionis 3/16 in. See **Gypsum Board (CKNX)** category for names of manufacturers.

6. **Joint Tape and Compound** — (Not Shown)- Vinyl, dry or premixed joint compound, applied to joints and screw heads. Paper tape, 2 in. wide, embedded in first layer of compound over all joints. When used in conjunction with a suspended ceiling, joints and screw heads above ceiling shall be also be finished.

7. **Caulking and Sealants*** — Nom 5/8 in. depth of sealant applied to fill max 3/16 in. wide gaps around the perimeter on both sides of patrition for sound and smoke control. A nominal 1/4 in. diam bead of sealant shall be applied to cover intermittent point contact locations.

SPECIFIED TECHNOLOGIES INC — SpecSeal Smoke "N" Sound Sealant.

*Bearing the UL Classification Mark

Last Updated on 2009-03-23

[Questions?](#)

[Notice of Disclaimer](#)

[Page Top](#)

Copyright © 2009 Underwriters Laboratories Inc.®

The appearance of a company's name or product in this database does not in itself assure that products so identified have been manufactured under UL's Follow-Up Service. Only those products bearing the UL Mark should be considered to be Listed and covered under UL's Follow-Up Service. Always look for the Mark on the product.

UL permits the reproduction of the material contained in the Online Certification Directory subject to the following conditions: 1. The Guide Information, Designs and/or Listings (files) must be presented in their entirety and in a non-misleading manner, without any manipulation of the data (or drawings). 2. The statement "Reprinted from the Online Certifications Directory with permission from Underwriters Laboratories Inc." must appear adjacent to the extracted material. In addition, the reprinted material must include a copyright notice in the following format: "Copyright © 2009 Underwriters Laboratories Inc.®"

An independent organization working for a safer world with integrity, precision and knowledge.

