



BXUV.U421 Fire Resistance Ratings - ANSI/UL 263

[Page Bottom](#)

Design/System/Construction/Assembly Usage Disclaimer

- Authorities Having Jurisdiction should be consulted in all cases as to the particular requirements covering the installation and use of UL Listed or Classified products, equipment, system, devices, and materials.
- Authorities Having Jurisdiction should be consulted before construction.
- Fire resistance assemblies and products are developed by the design submitter and have been investigated by UL for compliance with applicable requirements. The published information cannot always address every construction nuance encountered in the field.
- When field issues arise, it is recommended the first contact for assistance be the technical service staff provided by the product manufacturer noted for the design. Users of fire resistance assemblies are advised to consult the general Guide Information for each product category and each group of assemblies. The Guide Information includes specifics concerning alternate materials and alternate methods of construction.
- Only products which bear UL's Mark are considered as Classified, Listed, or Recognized.

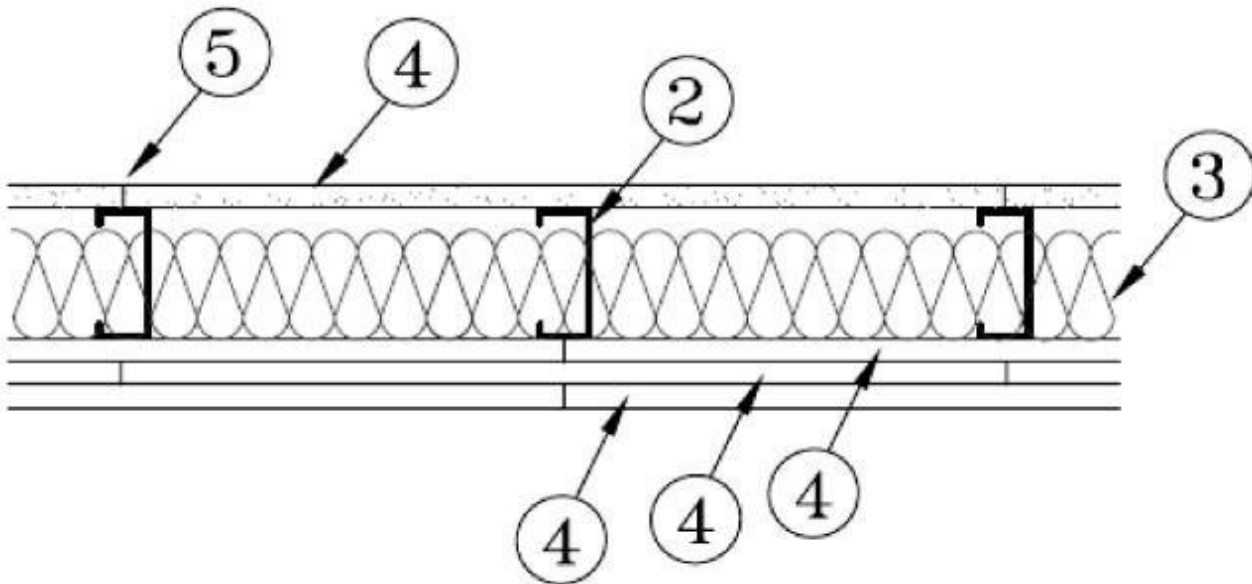
Fire Resistance Ratings - ANSI/UL 263

[See General Information for Fire Resistance Ratings - ANSI/UL 263](#)

Design No. U421

January 22, 2010

Nonbearing Wall Rating — 2 Hr



1. **Floor and Ceiling Runners** — (Not Shown) - Channel shaped, min 2-1/2 in. deep when Items 4, 4A or 4B are used or 3-5/8 in deep when Items 4C, 4D or 4E are used, with min 1-1/4 in. long legs, fabricated from min 25 MSG corrosion-protected steel, attached to floor and ceiling with fasteners 24 in. OC max.

1A. **Framing Members* - Floor and Ceiling Runners** — (Not Shown) - As an alternate to Item 1 -For use with Item 2A, proprietary channel shaped, min. 2-1/2 in. deep when Items 4, 4A or 4B are used or 3-5/8 in deep when Items 4C or 4D are used, fabricated from min. 0.015 in. (min bare metal thickness) galvanized steel, attached to floor and ceiling with fasteners 24 in. OC max. Effective thickness is 0.034 in. Not to be used with Item 4E.

CLARKWESTERN BUILDING SYSTEMS INC — UltraSTEEL®

DIETRICH INDUSTRIES INC — UltraSTEEL®.

1B. **Framing Members* - Floor and Ceiling Runner** — Not shown - As an alternate to Items 1, and 1A, proprietary channel shaped runners, min 2-1/2 in. deep when Items 4, 4A or 4B are used or 3-5/8 in deep when Items 4C, 4D or 4E are used, with 1-1/4 in. long legs fabricated from min 0.020 in. thick galv steel, attached to floor and ceiling with fasteners spaced 24 in. OC max.

MARINO\WARE A DIV OF WARE INDUSTRIES

INC — Viper20S™ Track, Viper20D™ Track

1C. **Framing Members* — Floor and Ceiling Runners** — Not shown — As an alternate to Items 1, 1A, and 1B, proprietary channel shaped, min. 3-5/8 in. wide, fabricated from min. 0.0150 in. (min bare metal thickness) galvanized steel, attached to floor and ceiling with fasteners 24 in. OC max. Not to be used with Item 4E.

CLARKWESTERN BUILDING SYSTEMS INC — CW ProTRAK™

DIETRICH INDUSTRIES INC — DIETRICH ProTRAK™

DMFCWBS L L C — ProTRAK™

2. **Steel Studs** — Channel shaped, min 2-1/2 in. deep when Items 4, 4A or 4B are used or 3-5/8 in deep when Items 4C, 4D or 4E are used, 1-1/4 in. flanges and 3/16 in. returns, fabricated from min 25 MSG corrosion-protected steel, spaced a max of 24 in. OC. Studs to be cut 3/4 in. less than assembly height and friction-fit in place.

2A. **Framing Members* - Steel Studs** — In lieu of Item 2 - For use with Item 1A - Proprietary channel shaped studs, min. 2-1/2 in. deep when Items 4, 4A or 4B are used or 3-5/8 in deep when Items 4C or 4D are used, fabricated from min. 0.015 in. (min bare metal thickness) galvanized steel, spaced a max of 24 in. OC. Studs to be cut 3/4 in. less than assembly height. Allowable use of studs is shown in the table below. For direct attachment of gypsum board only. Effective thickness is 0.034 in. Not to be used with Item 4E.

CLARKWESTERN BUILDING SYSTEMS INC — UltraSTEEL®

DIETRICH INDUSTRIES INC — UltraSTEEL®.

2B. **Framing Members* - Steel Studs** — Not shown - In lieu of Item 2 and 2A — For use with Item 1B - proprietary channel shaped steel studs, 1-1/4 in. wide by min 2-1/2 in. deep when Items 4, 4A or 4B are used or 3-5/8 in deep when Items 4C, 4D or 4E are used, fabricated from min 0.020 in. thick galv steel. Studs cut 3/8 to 3/4 in. less in length than assembly height.

MARINO\WARE A DIV OF WARE INDUSTRIES

INC — Viper20S™, Viper20D™

2C. **Framing Members* — Steel Studs** — As an alternate to Items 2, 2A and 2B, for use with Item 1C, proprietary channel shaped studs, min. 3-5/8 in. wide, fabricated from min. 0.0150 in. (min bare metal thickness) galvanized steel, spaced a max of 24 in. OC. Studs to be cut 3/4 in. less than assembly height. Not to be used with Item 4E.

CLARKWESTERN BUILDING SYSTEMS INC — CW ProSTUD™

DIETRICH INDUSTRIES INC — DIETRICH ProSTUD™

DMFCWBS L L C — ProSTUD™

3. **Batts and Blankets*** — (Optional) Placed in stud cavities, any glass fiber or mineral wool insulation bearing the UL Classification Marking as to Surface Burning Characteristics and/or Fire Resistance. See **Batts and Blankets** (BKNV or BZJZ) Categories for names of Classified companies.

4. **Gypsum Board*** — Nom 5/8 in. thick gypsum panels with beveled, square or tapered edges. Base layer applied vertically or horizontally on both sides of the studs, with vertical joints centered over studs and staggered one stud cavity on opposite sides of studs. Horizontal edge joints (when applied horizontally) and horizontal butt joints (when applied vertically) on opposite sides of studs need not be staggered or backed. Base layer panels attached to studs with 1 in. long Type S or Hi-Low screws spaced 8 in. OC when applied horizontally, or 8 in. OC along the vertical edges and 12

in. OC in the field when applied vertically. When Items 1C and 2C are used the base layer is required to be installed vertically. Remaining two layers applied vertically or horizontally on one side of the wall. Horizontal butt joints staggered a min of 6 in. on adjacent layers. First of these two layers attached to studs with 1-5/8 in. long Type S or Hi-Low screws spaced 12 in. OC. Face layer attached to studs with 2-3/8 in. Type S or Hi-Low screws spaced 8 in. OC when applied horizontally, or 8 in. OC along the vertical edges and 12 in. OC in the field when applied vertically. When used in widths other than 48 in., gypsum panels to be installed horizontally.

AMERICAN GYPSUM CO — Types AGX-1 and AG-C.

GEORGIA-PACIFIC GYPSUM L L C — Type 9, Type 5, Type 6, Type DAP, Type DS, and Type DGG.

LAFARGE NORTH AMERICA INC — Type LGFC6A.

PABCO BUILDING PRODUCTS L L C, DBA

PABCO GYPSUM — Type PG-11.

TEMPLE-INLAND — Type X, Veneer Plaster Base - Type X, Water Rated - Type X, Sheathing - Type X, Soffit - Type X, GreenGlass Type X.

4A. **Gypsum Board*** — As an alternate to Item 4 - Nom 5/8 in. thick gypsum panels with beveled, square or tapered edges. Base layer panels applied vertically attached to studs with 1 in. long Type S or Hi-Low screws 8 in. OC along the vertical edges and 12 in. OC in the field. Remaining two layers applied vertically on one side of the wall. First of these two layers attached to studs with 1-5/8 in. long Type S or Hi-Low screws spaced 12 in. OC. Face layer attached to studs with 2-3/8 in. Type S or Hi-Low screws spaced 8 in. OC along the vertical edges and 12 in. OC in the field. Not to be used with Item 6, resilient channels.

TEMPLE-INLAND — Type X ComfortGuard Sound Deadening Gypsum Board.

4B. **Gypsum Board*** — As an alternate to Item 4, for use as the base layer of boards on one or both sides of the steel studs. Nom. 5/8 in. thick gypsum panels with beveled, square or tapered edges secured as described in Item 4. When used in widths other than 48 in., gypsum panels to be installed horizontally.

CANADIAN GYPSUM COMPANY — 5/8 in. thick Type AR, C, IP-AR, IP-X1, IP-X2, IPC-AR, SCX, SHX, WRX or WRC.

UNITED STATES GYPSUM CO — 5/8 in. thick Type AR, C, FRX-G, IP-AR, IP-X1, IP-X2, IPC-AR, SCX, SHX, WRX, WRC, USGX.

USG MEXICO S A DE C V — 5/8 in. thick Type AR, C, IP-AR, IP-X1, IP-X2, IPC-AR, SCX, SHX, WRX, WRC.

4C. **Gypsum Board*** — As an alternate to Item 4, for use as the base layer of boards on one or both sides of the steel studs. Nom. 5/8 in. thick gypsum board applied vertically to studs with #6 x 1-1/4 in. long bugle head screws spaced 8 in. OC at the perimeter and 12 in. OC in the field of the boards. Vertical joints are centered over studs and staggered from vertical joints on opposite sides of the wall.

NATIONAL GYPSUM CO — Types FSK, FSK-C, FSW, FSW-6, FSW-C

4D. **Gypsum Board*** — As an alternate to Item 4, for use as the base layer of boards on one or both sides of the steel studs. Nom. 5/8 in. thick gypsum board applied vertically or horizontally to studs. When applied vertically, boards attached with 1 in. long Type-S bugle head screws spaced 8 in. OC at the perimeter and 12 in. OC in the field with the 1st screw installed 4 in. from the board edges at the perimeter and 6 in. from the board edge in the field. Vertical joints are centered over studs and staggered from vertical joints on opposite sides of the wall. When applied horizontally, boards attached with 1 in. long Type-S bugle head screws spaced 8 in. OC at the perimeter and in the field with the 1st screw installed 4 in. from the board edge. Horizontal joints need not be staggered on opposite faces or backed by steel framing. When Items 1C and 2C are used the base layer is required to be installed vertically.

CERTAINTED GYPSUM INC — Type ProRoc Type X, ProRoc Type C

CERTAINEED GYPSUM CANADA INC — Type ProRoc Type X, ProRoc Abuse Resistant, ProRoc Type C

4E. **Gypsum Board*** — As an alternate to Item 4, for use as the base layer of boards on one or both sides of the steel studs Nom. 5/8 in. thick, 4 ft wide, attached to steel studs and floor and ceiling track with 1 in. long, Type S steel screws spaced 8 in. OC. along edges of board and 12 in. OC in the field of the board. Joints oriented vertically and staggered on opposite sides of the assembly.

CERTAINEED GYPSUM INC — Types 1, EGRG, GlasRoc, ProRoc Type X, ProRoc Type C.

CERTAINEED GYPSUM CANADA INC — ProRoc Type C, ProRoc Type X or ProRoc Type Abuse-Resistant.

NATIONAL GYPSUM CO — Types FSK, FSK-C, FSK-G, FSW-C, FSW-G, FSW, FSW-3, FSW-5, FSW-6.

5. **Joint Tape and Compound** — Vinyl or casein, dry or premixed joint compound applied in two coats to joints and screw heads of outer layers. Paper tape, nom 2 in. wide, embedded in first layer of compound over all joints of outer layer panels. When square-edge gypsum board is used, treatment of joints is optional.

6. **Furring Channels** — (Optional, not shown, for use on the single layer side only) — Resilient furring channels fabricated from min 25 MSG corrosion-protected steel, spaced vertically a max of 24 in. OC. Flange portion attached to each intersecting stud with 1/2 in. long Type S-12 steel screws.

7. **Caulking and Sealants*** — (Optional, not shown) - A bead of acoustical sealant applied around the partition perimeter for sound control.

UNITED STATES GYPSUM CO — Type AS

*Bearing the UL Classification Mark

Last Updated on 2010-01-22

[Questions?](#)

[Notice of Disclaimer](#)

[Page Top](#)

[Copyright © 2010 Underwriters Laboratories Inc.®](#)

The appearance of a company's name or product in this database does not in itself assure that products so identified have been manufactured under UL's Follow-Up Service. Only those products bearing the UL Mark should be considered to be Listed and covered under UL's Follow-Up Service. Always look for the Mark on the product.

UL permits the reproduction of the material contained in the Online Certification Directory subject to the following conditions: 1. The Guide Information, Designs and/or Listings (files) must be presented in their entirety and in a non-misleading manner, without any manipulation of the data (or drawings). 2. The statement "Reprinted from the Online Certifications Directory with permission from Underwriters Laboratories Inc." must appear adjacent to the extracted material. In addition, the reprinted material must include a copyright notice in the following format: "Copyright © 2010 Underwriters Laboratories Inc.®"

An independent organization working for a safer world with integrity, precision and knowledge.

