



QUICKFRAME®
Product Catalog

QuickFrame®
Rough Opening System



The QuickFrame® Rough Opening System streamlines installation by reducing the number of components required to frame windows and doors. The QuickFrame® system comes in extra wide flanges and extra long returns and can be used for exterior or interior framing around any non-load bearing opening. Simply attach the header and jamb with our QuickFrame® Clip for “quick” and easy installation.

- **INCREASED PERFORMANCE**
- **LESS MATERIAL WEIGHT AND PIECES**
- **UP TO 50% REDUCTION IN ASSEMBLY TIME**
- **ELIMINATING BUILT-UP JAMBS AND HEADERS**
- **PREDRILLED HOLES IN THE CLIP FOR EASY INSTALLATION**

*QuickFrame Identification System
(in compliance with AISI)*

600-QFH-300-54

600-QFJ-300-54

- Member Width 6" = 600 x 1/100 in.
- Style: QF = QuickFrame Header/Jamb
- Flange Width: 3" = 300 x 1/100 in.
- Material Thickness: Minimum Base Metal Thickness: 0.054 in. = 54 mils (1 mil = 1/1000 in.)

SYMBOLS AND DEFINITIONS

Gross Properties

I_x	Moment of inertia about x-axis
S_x	Section modulus about x-axis
r_x	Radius about x-axis
I_y	Moment of inertia about y-axis
r_y	Radius about y-axis

Effective Properties

I_{xe}	Moment of inertia about x-axis
S_{xe}	Section modulus about x-axis
M_a	Allowable moment for track and channel sections based on local buckling
V_{ag}	Allowable strong axis shear away from punchout, per AISI Section C3.2.1
V_{anet}	Allowable strong axis shear at punchout, per AISI Section 3.2.2

Torsional and other Properties

J	Saint-Venant torsion constant. The values shown in the tables have been multiplied by 1,000. To obtain the actual values, divide table values by 1,000
C_w	Torsional warping constant
x_o	Distance from shear center to centroid along principal x-axis
r_o	Polar radius of gyration about shear center
β	$1 - (x_o / r_o)^2$

APPLICATIONS

QuickFrame Header and Jamb:

- Exterior Curtain-Wall Headers and Jambs.
- Interior Non-Load Bearing Headers and Jambs.
- Load Bearing Jambs.

Notes:

1. Header must be ordered ½" shorter to accommodate the QuickFrame Clip.
2. For header application use unpunched material.

CODES AND STANDARDS

- ASTM A1003 and A653 - Material Specification
- ASTM C955, AISI S240 - Product and Coating Specification

PRODUCT DATA

QuickFrame Header and Jamb:

- Available Widths: 3-5/8", 4", 6" and 8"
- Available Flanges: 3" and 3-1/2"
- Return Lip: 1"

QuickFrame Clip:

- Available Lengths: 3-1/2" (for 3-5/8" stud)
3-7/8" (for 4" stud)
5-7/8" (for 6" stud)
7-7/8" (for 8" stud)
- Available Heights: 3-1/8" (for 3" flange header)
3-5/8" (for 3-1/2" flange header)

MATERIAL SPECIFICATIONS

QuickFrame Header and Jamb:

- Available Thickness's: 33 mils (20 Gauge) 33 ksi
43 mils (18 Gauge) 33 ksi
54 mils (16 Gauge) 50 ksi
68 mils (14 Gauge) 50 ksi
97 mils (12 Gauge) 50 ksi
118 mils (10 Gauge) 50 ksi
- Coating: G60 standard
G90 available upon request

QuickFrame Clip:

- Available Gauge: 68 mils (14 Gauge)
- Yield Strength: 50 ksi
- Coating: G90 standard

Warrenty & Limitations

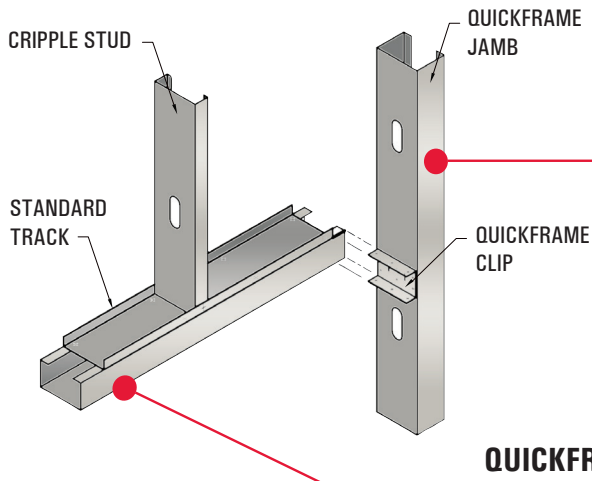
All products presented herein are warranted to the buyer to be free from defects in material and workmanship. The foregoing warranty is non-assignable and in lieu of and excludes all other warranties not expressly set forth herein, whether express or implied by operation of law or otherwise, including but not limited to any implied warranties of merchantability or fitness for a particular purpose. All details and specifications presented herein are intended as a general guide for the use of Marino\WARE® framing systems. These products should not be used without evaluation by a qualified engineer or architect to determine their suitability for a specific use.

Marino\WARE® assumes no responsibility for failure resulting from use of its details or specifications, or for failure resulting from improper application or installation of these products.

Governing Law

All issues arising in connection with your order and all transactions associated with it shall be interpreted according to the laws of the State of New Jersey, and all actions or other proceedings arising out of such issues shall be brought only in Superior Court, State of New Jersey, County of Essex, or United States District Court for the District of New Jersey. No action may be brought more than one year after accrual of the cause of action therefore.

The complete QuickFrame System is available through all MarinoWARE suppliers and components can be used separately or together with all MarinoWARE framing solutions. For more information visit www.MarinoWare.com.



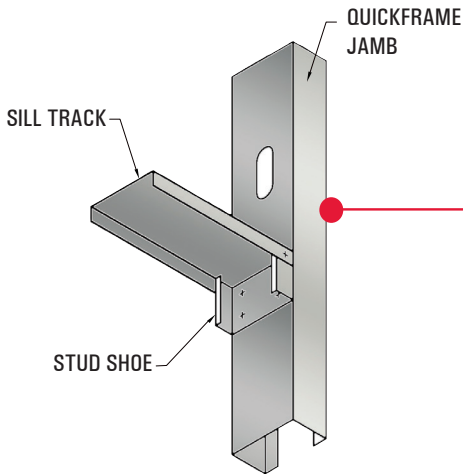
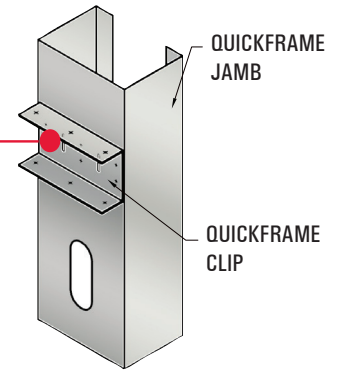
QUICKFRAME JAMB

- Replaces built-up headers & jamb
- On header sliminated multiple pieces
- Pre-cut to length
- Reduced assembly time up to 50%

QUICKFRAME HEADER

QUICKFRAME CLIP

- Simple one piece clip
- Predrilled holes for easy installation
- Available in 14 gauge with 3" and 3 1/2" flange
- Prefabricated slots to ease adjustments

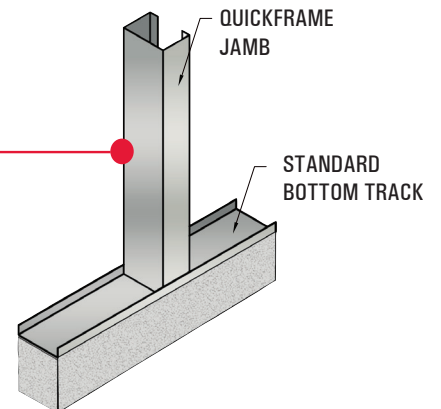


SILL & QUICKFRAME JAMB

- One sill track eliminates multiple pieces
- Pre-cut to length
- Works with larger openings
- Reduced assembly time up to 50%

QUICKFRAME JAMB

- Replaces built-up jamb
- Pre-cut to length
- Reduced assembly time up to 50%



MEMBERS	Design Thickness (in.)	GROSS										EFFECTIVE								TORSIONAL				
		Area (in ²)	Weight (lb/ft)	I ^x (in ⁴)	S _x (in ³)	r _x (in.)	I _y (in ⁴)	S _y (in ³)	r _y (in.)	I _{xx} (in ⁴)	S _{xx} (in ³)	M _{xx} (k-in)	M _{yy} (k-in)	I _{xy} (in ⁴)	S _{xy} (in ³)	M _{xy} (k-in)	M _{yy} (k-in)	V _{web} (lb)	Jx1000 (in ⁴)	C _w (in ⁶)	x _o (in.)	r _o (in.)	β	
3-5/8"																								
362QFH300-33 (33 ksi)	0.0346	0.392	1.33	0.898	0.495	1.51	0.543	0.317	1.18	0.790	0.357	7.06	8.07	0.495	0.257	5.08	5.17	1024	0.156	2.44	-2.98	3.54	0.293	
362QFH300-43 (33 ksi)	0.0451	0.509	1.73	1.16	0.640	1.51	0.700	0.408	1.17	1.09	0.521	10.3	11.4	0.676	0.36	7.11	7.31	1739	0.345	3.12	-2.97	3.53	0.293	
362QFH300-54 (50 ksi)	0.0566	0.634	2.16	1.43	0.791	1.50	0.863	0.504	1.17	1.36	0.656	19.6	20.2	0.841	0.451	13.5	13.0	3372	0.677	3.83	-2.95	3.51	0.293	
362QFH300-68 (50 ksi)	0.0713	0.791	2.69	1.77	0.976	1.50	1.06	0.619	1.16	1.77	0.884	26.5	27.0	1.06	0.601	18.0	17.3	4370	1.34	4.69	-2.94	3.49	0.294	
362QFH300-97 (50 ksi)	0.1017	1.11	3.76	2.42	1.34	1.48	1.44	0.839	1.14	2.42	1.31	43.2	40.0	1.44	0.839	29.0	25.1	5943	3.81	6.33	-2.90	3.45	0.294	
362QFH300-118 (50 ksi)	0.1242	1.33	4.52	2.86	1.58	1.47	1.69	0.986	1.13	2.86	1.58	53.2	47.3	1.69	0.986	34.9	29.5	6996	6.83	7.41	-2.87	3.42	0.294	
362QFH350-33 (33 ksi)	0.0346	0.426	1.45	1.01	0.557	1.54	0.778	0.393	1.35	0.852	0.373	7.38	8.50	0.715	0.324	6.41	5.95	1024	0.170	3.45	-3.47	4.03	0.258	
362QFH350-43 (33 ksi)	0.0451	0.554	1.89	1.30	0.719	1.53	1.00	0.507	1.35	1.19	0.548	10.8	12.1	0.972	0.451	8.92	8.46	1739	0.376	4.41	-3.46	4.02	0.258	
362QFH350-54 (50 ksi)	0.0566	0.691	2.35	1.61	0.890	1.53	1.24	0.627	1.34	1.48	0.691	20.7	21.3	1.21	0.566	17.0	15.0	3372	0.738	5.43	-3.45	4.00	0.258	
362QFH350-68 (50 ksi)	0.0713	0.862	2.93	2.00	1.10	1.52	1.53	0.772	1.33	1.94	0.922	27.6	28.6	1.53	0.751	22.5	20.2	4370	1.46	6.67	-3.43	3.98	0.258	
362QFH350-97 (50 ksi)	0.1017	1.21	4.11	2.74	1.51	1.51	2.09	1.05	1.31	2.74	1.37	40.9	44.1	2.09	1.05	36.3	31.0	5943	4.16	9.02	-3.39	3.94	0.258	
362QFH350-118 (50 ksi)	0.1242	1.45	4.95	3.24	1.79	1.49	2.46	1.24	1.30	3.24	1.72	57.0	53.6	2.46	1.24	43.9	37.1	6996	7.47	10.6	-3.36	3.90	0.258	
4"																								
400QFH300-33 (33 ksi)	0.0346	0.405	1.38	1.12	0.561	1.66	0.563	0.321	1.18	0.989	0.407	8.04	8.98	0.514	0.261	5.16	5.21	976	0.162	2.84	-2.91	3.56	0.329	
400QFH300-43 (33 ksi)	0.0451	0.526	1.79	1.45	0.724	1.66	0.726	0.414	1.17	1.37	0.592	11.7	12.7	0.701	0.365	7.21	7.36	1739	0.357	3.63	-2.90	3.54	0.330	
400QFH300-54 (50 ksi)	0.0566	0.655	2.23	1.79	0.896	1.65	0.895	0.510	1.17	1.70	0.746	22.3	22.5	0.873	0.457	13.7	13.0	3372	0.700	4.46	-2.89	3.53	0.330	
400QFH300-68 (50 ksi)	0.0713	0.818	2.78	2.22	1.11	1.65	1.10	0.628	1.16	2.21	1.01	30.1	30.2	1.10	0.609	18.2	17.4	4871	1.39	5.47	-2.87	3.50	0.330	
400QFH300-97 (50 ksi)	0.1017	1.14	3.89	3.04	1.52	1.63	1.50	0.851	1.14	3.04	1.48	49.0	45.5	1.50	0.851	29.4	25.5	6658	3.94	7.39	-2.83	3.46	0.331	
400QFH300-118 (50 ksi)	0.1242	1.38	4.68	3.60	1.80	1.62	1.76	1.00	1.13	3.60	1.80	60.6	53.9	1.76	1.00	35.5	30.0	7869	7.07	8.67	-2.80	3.43	0.332	
400QFH350-33 (33 ksi)	0.0346	0.439	1.50	1.26	0.629	1.69	0.806	0.399	1.35	1.07	0.424	8.39	9.43	0.741	0.329	6.51	5.98	976	0.175	4.01	-3.40	4.03	0.289	
400QFH350-43 (33 ksi)	0.0451	0.571	1.94	1.63	0.812	1.69	1.04	0.514	1.35	1.48	0.622	12.3	13.4	1.01	0.458	9.05	8.5	1739	0.387	5.14	-3.39	4.02	0.289	
400QFH350-54 (50 ksi)	0.0566	0.712	2.42	2.01	1.01	1.68	1.29	0.636	1.34	1.85	0.785	23.5	23.7	1.26	0.574	17.2	15.1	3372	0.760	6.33	-3.38	4.00	0.289	
400QFH350-68 (50 ksi)	0.0713	0.889	3.03	2.49	1.25	1.67	1.59	0.783	1.34	2.42	1.05	31.3	31.9	1.59	0.762	22.8	20.2	4871	1.51	7.79	-3.36	3.98	0.289	
400QFH350-97 (50 ksi)	0.1017	1.25	4.24	3.42	1.71	1.66	2.17	1.07	1.32	3.42	1.55	46.3	49.3	2.17	1.07	36.8	31.3	6658	4.29	10.6	-3.32	3.94	0.290	
400QFH350-118 (50 ksi)	0.1242	1.50	5.10	4.06	2.03	1.65	2.56	1.26	1.31	4.06	1.95	64.6	60.8	2.56	1.26	44.6	37.7	7869	7.71	12.4	-3.29	3.90	0.290	
6"																								
600QFH300-33 (33 ksi)	0.0346	0.474	1.61	2.82	0.939	2.44	0.652	0.337	1.17	2.50	0.653	12.9	13.9	0.592	0.275	5.43	5.32	638	0.189	5.75	-2.60	3.75	0.520	
600QFH300-43 (33 ksi)	0.0451	0.616	2.10	3.65	1.22	2.43	0.841	0.435	1.17	3.46	1.01	20.0	19.9	0.811	0.384	7.59	7.57	1415	0.418	7.37	-2.59	3.74	0.521	
600QFH300-54 (50 ksi)	0.0566	0.769	2.62	4.52	1.51	2.43	1.04	0.537	1.16	4.32	1.27	38.1	35.2	1.01	0.482	14.4	13.4	2822	0.821	9.09	-2.57	3.72	0.522	
600QFH300-68 (50 ksi)	0.0713	0.960	3.27	5.61	1.87	2.42	1.28	0.661	1.15	5.60	1.71	51.3	47.7	1.28	0.642	19.2	18.0	5350	1.63	11.2	-2.55	3.70	0.524	
600QFH300-97 (50 ksi)	0.1017	1.35	4.58	7.75	2.58	2.40	1.74	0.899	1.14	7.75	2.51	82.9	74.4	1.74	0.899	31.0	27.5	10472	4.64	15.2	-2.52	3.66	0.527	
600QFH300-118 (50 ksi)	0.1242	1.62	5.53	9.23	3.08	2.38	2.05	1.06	1.12	9.23	3.08	104	92.2	2.05	1.06	37.5	31.7	12526	8.35	18.0	-2.49	3.63	0.529	
600QFH350-33 (33 ksi)	0.0346	0.509	1.73	3.12	1.04	2.48	0.934	0.420	1.35	2.68	0.670	13.2	14.4	0.855	0.348	6.88	6.08	638	0.203	8.16	-3.06	4.17	0.460	
600QFH350-43 (33 ksi)	0.0451	0.661	2.25	4.05	1.35	2.47	1.21	0.543	1.35	3.72	1.06	20.9	20.7	1.17	0.484	9.56	8.69	1415	0.448	10.5	-3.05	4.15	0.460	
600QFH350-54 (50 ksi)	0.0566	0.825	2.81	5.02	1.67	2.47	1.49	0.671	1.34	4.66	1.34	40.0	36.6	1.46	0.607	18.2	15.3	2822	0.881	12.9	-3.04	4.14	0.461	
600QFH350-68 (50 ksi)	0.0713	1.03	3.51	6.24	2.08	2.46	1.84	0.828	1.34	6.08	1.77	53.0	49.7	1.84	0.805	24.1	20.8	5350	1.75	16.0	-3.02	4.12	0.462	
600QFH350-97 (50 ksi)	0.1017	1.45	4.93	8.63	2.88	2.44	2.52	1.13	1.32	8.63	2.59	77.6	78.4	2.52	1.13	39.0	32.4	10472	4.99	21.8	-2.98	4.07	0.464	
600QFH350-118 (50 ksi)	0.1242	1.75	5.95	10.3	3.44	2.43	2.98	1.34	1.31	10.3	3.27	108	100	2.98	1.34	47.3	40.7	12526	8.99	25.8	-2.95	4.04	0.466	
8"																								
800QFH300-33 (33 ksi)	0.0346	0.543	1.85	5.46	1.37	3.17	0.719	0.348	1.15	4.74	0.871	17.2	18.9	0.651	0.284	5.61	5.44	474	0.217	10.1	-2.35	4.11	0.673	
800QFH300-43 (33 ksi)	0.0451	0.706	2.40	7.07	1.77	3.16	0.927	0.449	1.15	6.73	1.41	27.9	27.3	0.892	0.396	7.83	7.74	1051	0.479	13.0	-2.34	4.10	0.674	
800QFH300-54 (50 ksi)	0.0566	0.882	3.00	8.79	2.20	3.16	1.15	0.554	1.14	8.43	1.81	54.3	48.2	1.11	0.497	14.9	13.7	2091	0.942	16.1	-2.33	4.08	0.676	
800QFH300-68 (50 ksi)	0.0713	1.10	3.75	10.9	2.73	3.15	1.41	0.682	1.13	10.9	2.52	75.4	65.7	1.41	0.662	19.8	18.5	4220	1.87	19.8	-2.31	4.06	0.677	
800QFH300-97 (50 ksi)	0.1017	1.55	5.28	15.2	3.79	3.13	1.92	0.929	1.11	15.2	3.68	121	104	1.92	0.929	32.0	28.3	10885	5.34	27.1	-2.27	4.02	0.681	
800QFH300-118 (50 ksi)	0.1242	1.87	6.37	18.1	4.53	3.11	2.27	1.09	1.10	18.1	4.53	153	133	2.27	1.09	38.8	35.3	16235	9.63	32.1	-2.24	3.99	0.684	
800QFH350-33 (33 ksi)	0.0346	0.578	1.97	6.01	1.50	3.22	1.03	0.434	1.34	5.00	0.897	17.7	19.5	0.941	0.360	7.12	6.18	474	0.231	14.4	-2.79	4.47	0.610	
800QFH350-43 (33 ksi)	0.0451	0.751	2.56	7.79	1.95	3.22	1.33	0.561	1.33	7.20	1.46	28.8	28.2	1.29	0.500	9.89	8.85	1051						

QuickFrame® Jamb Section Properties

(Punched)



www.MarinoWARE.com

MEMBERS	Design Thickness (in.)	GROSS									EFFECTIVE					TORSIONAL					Lu (in.)
		Area (in ²)	Weight (lb/ft)	I _x (in ⁴)	S _x (in ³)	r _x (in.)	I _y (in ⁴)	S _y (in ³)	r _y (in.)	I _{xx} (in ⁴)	S _{xx} (in ³)	M _{mix} (k-in)	M _{adx} (k-in)	V _{an} (lb)	Jx1000 (in ⁴)	C _w (in ⁶)	X _c (in.)	r _o (in.)	β		
3-5/8"																					
362QFJ300-33 (33 ksi)	0.0346	0.392	1.33	0.898	0.495	1.51	0.543	0.317	1.18	0.790	0.324	6.39	8.07	521	0.156	2.44	-2.98	3.54	0.293	86.3	
362QFJ300-43 (33 ksi)	0.0451	0.509	1.73	1.16	0.640	1.51	0.700	0.408	1.17	1.09	0.492	9.73	11.4	676	0.345	3.12	-2.97	3.53	0.293	86.3	
362QFJ300-54 (50 ksi)	0.0566	0.634	2.16	1.43	0.791	1.50	0.863	0.504	1.17	1.36	0.624	18.7	20.2	1016	0.677	3.83	-2.95	3.51	0.293	70.0	
362QFJ300-68 (50 ksi)	0.0713	0.791	2.69	1.77	0.976	1.50	1.06	0.619	1.16	1.77	0.863	25.8	27.0	1004	1.34	4.69	-2.94	3.49	0.294	70.1	
362QFJ300-97 (50 ksi)	0.1017	1.11	3.76	2.42	1.34	1.48	1.44	0.839	1.14	2.42	1.29	42.6	40.0	875	3.81	6.33	-2.90	3.45	0.294	70.8	
362QFJ300-118 (50 ksi)	0.1242	1.33	4.52	2.86	1.58	1.47	1.69	0.986	1.13	2.86	1.56	52.6	47.3	784	6.83	7.41	-2.87	3.42	0.294	71.5	
362QFJ350-54 (50 ksi)	0.0566	0.691	2.35	1.61	0.890	1.53	1.24	0.627	1.34	1.48	0.655	19.6	21.3	1016	0.738	5.43	-3.45	4.00	0.258	78.8	
362QFJ350-68 (50 ksi)	0.0713	0.862	2.93	2.00	1.10	1.52	1.53	0.772	1.33	1.94	0.895	26.8	28.6	1004	1.46	6.67	-3.43	3.98	0.258	79.0	
362QFJ350-97 (50 ksi)	0.1017	1.21	4.11	2.74	1.51	1.51	2.09	1.05	1.31	2.74	1.34	40.1	44.1	875	4.16	9.02	-3.39	3.94	0.258	79.7	
362QFJ350-118 (50 ksi)	0.1242	1.45	4.95	3.24	1.79	1.49	2.46	1.24	1.30	3.24	1.69	56.2	53.6	784	7.47	10.6	-3.36	3.90	0.258	80.6	
4"																					
400QFJ300-33 (33 ksi)	0.0346	0.405	1.38	1.12	0.561	1.66	0.563	0.321	1.18	0.989	0.361	7.14	8.98	595	0.162	2.84	-2.91	3.56	0.329	84.9	
400QFJ300-43 (33 ksi)	0.0451	0.526	1.79	1.45	0.724	1.66	0.726	0.414	1.17	1.37	0.552	10.9	12.7	810	0.357	3.63	-2.90	3.54	0.330	84.9	
400QFJ300-54 (50 ksi)	0.0566	0.655	2.23	1.79	0.896	1.65	0.895	0.510	1.17	1.70	0.700	21.0	22.5	1223	0.700	4.46	-2.89	3.53	0.330	68.8	
400QFJ300-68 (50 ksi)	0.0713	0.818	2.78	2.22	1.11	1.65	1.10	0.628	1.16	2.21	0.973	29.1	30.2	1356	1.39	5.47	-2.87	3.50	0.330	68.9	
400QFJ300-97 (50 ksi)	0.1017	1.14	3.89	3.04	1.52	1.63	1.50	0.851	1.14	3.04	1.47	48.4	45.5	1207	3.94	7.39	-2.83	3.46	0.331	69.4	
400QFJ300-118 (50 ksi)	0.1242	1.38	4.68	3.60	1.80	1.62	1.76	1.00	1.13	3.60	1.78	60.0	53.9	1102	7.07	8.67	-2.80	3.43	0.332	69.9	
400QFJ350-54 (50 ksi)	0.0566	0.712	2.42	2.01	1.01	1.68	1.29	0.636	1.34	1.85	0.735	22.0	23.7	1223	0.760	6.33	-3.38	4.00	0.289	77.6	
400QFJ350-68 (50 ksi)	0.0713	0.889	3.03	2.49	1.25	1.67	1.59	0.783	1.34	2.42	1.01	30.2	31.9	1356	1.51	7.79	-3.36	3.98	0.289	77.8	
400QFJ350-97 (50 ksi)	0.1017	1.25	4.24	3.42	1.71	1.66	2.17	1.07	1.32	3.42	1.52	45.5	49.3	1207	4.29	10.6	-3.32	3.94	0.290	78.3	
400QFJ350-118 (50 ksi)	0.1242	1.50	5.10	4.06	2.03	1.65	2.56	1.26	1.31	4.06	1.92	63.8	60.8	1102	7.71	12.4	-3.29	3.90	0.290	78.9	
6"																					
600QFJ300-33 (33 ksi)	0.0346	0.474	1.61	2.82	0.939	2.44	0.652	0.337	1.17	2.50	0.653	12.9	13.9	638	0.189	5.75	-2.60	3.75	0.520	81.1	
600QFJ300-43 (33 ksi)	0.0451	0.616	2.10	3.65	1.22	2.43	0.841	0.435	1.17	3.46	1.01	20.0	19.9	1240	0.418	7.37	-2.59	3.74	0.521	81.0	
600QFJ300-54 (50 ksi)	0.0566	0.769	2.62	4.52	1.51	2.43	1.04	0.537	1.16	4.32	1.27	38.1	35.2	1947	0.821	9.09	-2.57	3.72	0.522	65.6	
600QFJ300-68 (50 ksi)	0.0713	0.960	3.27	5.61	1.87	2.42	1.28	0.661	1.15	5.60	1.71	51.3	47.7	2879	1.63	11.2	-2.55	3.70	0.524	65.5	
600QFJ300-97 (50 ksi)	0.1017	1.35	4.58	7.75	2.58	2.40	1.74	0.899	1.14	7.75	2.51	82.9	74.4	3805	4.64	15.2	-2.52	3.66	0.527	65.5	
600QFJ300-118 (50 ksi)	0.1242	1.62	5.53	9.23	3.08	2.38	2.05	1.06	1.12	9.23	3.08	104	92.2	3622	8.35	18.0	-2.49	3.63	0.529	65.5	
600QFJ350-33 (33 ksi)	0.0346	0.509	1.73	3.12	1.04	2.48	0.934	0.420	1.35	2.68	0.670	13.2	14.4	638	0.203	8.16	-3.06	4.17	0.460	91.9	
600QFJ350-43 (33 ksi)	0.0451	0.661	2.25	4.05	1.35	2.47	1.21	0.543	1.35	3.72	1.06	20.9	20.7	1240	0.448	10.5	-3.05	4.15	0.460	91.8	
600QFJ350-54 (50 ksi)	0.0566	0.825	2.81	5.02	1.67	2.47	1.49	0.671	1.34	4.66	1.34	40.0	36.6	1947	0.881	12.9	-3.04	4.14	0.461	74.4	
600QFJ350-68 (50 ksi)	0.0713	1.03	3.51	6.24	2.08	2.46	1.84	0.828	1.34	6.08	1.77	53.0	49.7	2879	1.75	16.0	-3.02	4.12	0.462	74.4	
600QFJ350-97 (50 ksi)	0.1017	1.45	4.93	8.63	2.88	2.44	2.52	1.13	1.32	8.63	2.59	77.6	78.4	3805	4.99	21.8	-2.98	4.07	0.464	74.4	
600QFJ350-118 (50 ksi)	0.1242	1.75	5.95	10.3	3.44	2.43	2.98	1.34	1.31	10.3	3.27	108	100	3622	8.99	25.8	-2.95	4.04	0.466	74.5	
8"																					
800QFJ300-33 (33 ksi)	0.0346	0.543	1.85	5.46	1.37	3.17	0.719	0.348	1.15	4.74	0.871	17.2	18.9	474	0.217	10.1	-2.35	4.11	0.673	79.4	
800QFJ300-43 (33 ksi)	0.0451	0.706	2.40	7.07	1.77	3.16	0.927	0.449	1.15	6.73	1.41	27.9	27.3	1051	0.479	13.0	-2.34	4.10	0.674	79.2	
800QFJ300-54 (50 ksi)	0.0566	0.882	3.00	8.79	2.20	3.16	1.15	0.554	1.14	8.43	1.81	54.3	48.2	2091	0.942	16.1	-2.33	4.08	0.676	64.1	
800QFJ300-68 (50 ksi)	0.0713	1.10	3.75	10.9	2.73	3.15	1.41	0.682	1.13	10.9	2.52	75.4	65.7	3367	1.87	19.8	-2.31	4.06	0.677	64.0	
800QFJ300-97 (50 ksi)	0.1017	1.55	5.28	15.2	3.79	3.13	1.92	0.929	1.11	15.2	3.68	121	104	5938	5.34	27.1	-2.27	4.02	0.681	63.7	
800QFJ300-118 (50 ksi)	0.1242	1.87	6.37	18.1	4.53	3.11	2.27	1.09	1.10	18.1	4.53	153	133	7115	9.63	32.1	-2.24	3.99	0.684	63.6	
800QFJ350-54 (50 ksi)	0.0566	0.938	3.19	9.68	2.42	3.21	1.65	0.694	1.32	9.03	1.87	56.0	49.8	2091	1.00	22.9	-2.77	4.44	0.612	73.1	
800QFJ350-68 (50 ksi)	0.0713	1.17	4.00	12.0	3.01	3.20	2.03	0.856	1.32	11.8	2.60	77.7	68.1	3367	1.99	28.3	-2.75	4.42	0.614	72.9	
800QFJ350-97 (50 ksi)	0.1017	1.65	5.62	16.7	4.19	3.18	2.78	1.17	1.30	16.7	3.79	113	109	5938	5.70	38.8	-2.71	4.38	0.617	72.7	
800QFJ350-118 (50 ksi)	0.1242	2.00	6.79	20.0	5.01	3.17	3.30	1.39	1.28	20.0	4.76	158	140	7115	10.3	46.1	-2.68	4.35	0.619	72.6	

Notes:

1. Section properties were based on AISI S100-2016 and unperforated sections.
2. When the web slenderness ratio exceeds 200, web stiffeners are required at support and concentrated load locations.

3. For header design, use unperforated effective section properties.
4. For jamb design, use perforated effective section properties.

For more information, please contact MarinoWARE® Technical Services at 866.545.1545
 This technical information reflects the most current information available and supersedes any and all previous publications effective February 25, 2026 | MW-QuickFrame Catalog | © WARE Industries, Inc. 2026

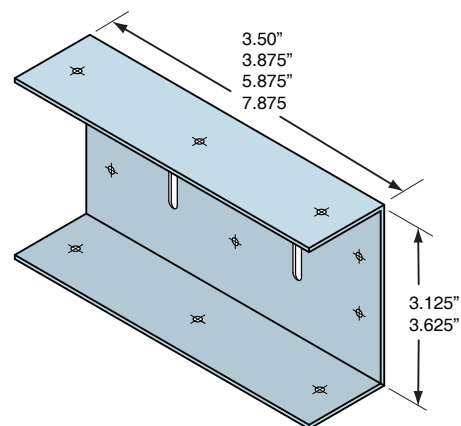
The QuickFrame Clip (QFC) is a 14 gauge (68 mil) U-shaped clip is designed to attach the QuickFrame Header to the QuickFrame Jamb.

Material: 68 mil (14 gauge), 50 ksi

Finish: Galvanized G90

Installation:

- Attach the QuickFrame clip (QFC) with minimum of 4 #10-16 screws to the QuickFrame Jamb (QFJ) and QuickFrame Header (QFH) respectively.



MODEL NO.	GAUGE	DIMENSIONS
QFC362300	14	3 1/2" x 3 1/8"
QFC400300	14	3 7/8" x 3 1/8"
QFC600300	14	5 7/8" x 3 1/8"
QFC800300	14	7 7/8" x 3 1/8"
QFC362350	14	3 1/2" x 3 5/8"
QFC400350	14	3 7/8" x 3 5/8"
QFC600350	14	5 7/8" x 3 5/8"
QFC800350	14	7 7/8" x 3 5/8"

QFC ALLOWABLE LATERAL LOADS (LBS.)

QuickFrame Clip	QuickFrame Member			
	54 mil (16 Gauge)	68 mil (14 Gauge)	97 mil (12 Gauge)	118 mil (10 Gauge)
	50 ksi	50 ksi	50 ksi	50 ksi
QFC362300	1,330	1,330	2,160	2,160
QFC400300	1,330	1,330	2,160	2,160
QFC600300	1,490	1,490	2,300	2,300
QFC800300	1,490	1,490	2,300	2,300
QFC362350	1,500	1,500	2,480	2,480
QFC400350	1,480	1,480	2,300	2,300
QFC600350	1,480	1,480	2,300	2,300
QFC800350	1,480	1,480	2,300	2,300

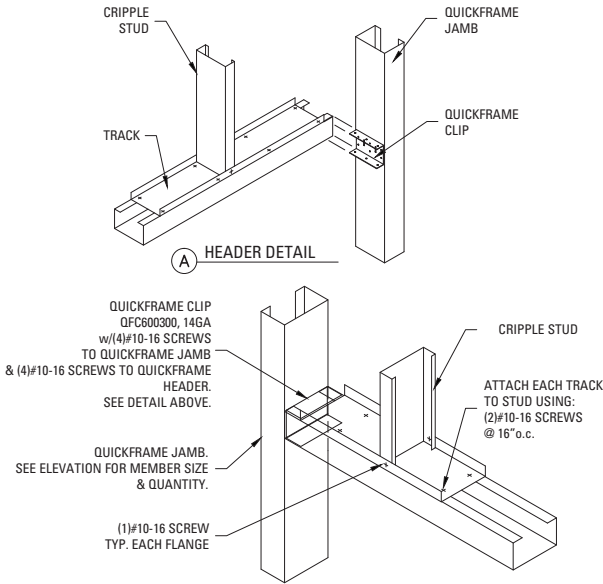
QFC ALLOWABLE VERTICAL LOADS (LBS.)

QuickFrame Clip	QuickFrame Member							
	54 mil (16 Gauge)		68 mil (14 Gauge)		97 mil (12 Gauge)		118 mil (10 Gauge)	
	50 ksi		50 ksi		50 ksi		50 ksi	
	0" Gap	1/4" Gap	0" Gap	1/4" Gap	0" Gap	1/4" Gap	0" Gap	1/4" Gap
QFC362300	1,090	948	1,090	948	1,630	1,418	1,630	1,418
QFC400300	1,030	896	1,030	896	1,380	1,200	1,380	1,200
QFC600300	1,030	896	1,030	896	1,380	1,200	1,380	1,200
QFC800300	1,030	896	1,030	896	1,380	1,200	1,380	1,200
QFC362350	940	818	940	818	1,430	1,244	1,430	1,244
QFC400350	940	818	940	818	1,430	1,244	1,430	1,244
QFC600350	1,030	896	1,030	896	1,710	1,488	1,710	1,488
QFC800350	1,030	896	1,030	896	1,710	1,488	1,710	1,488

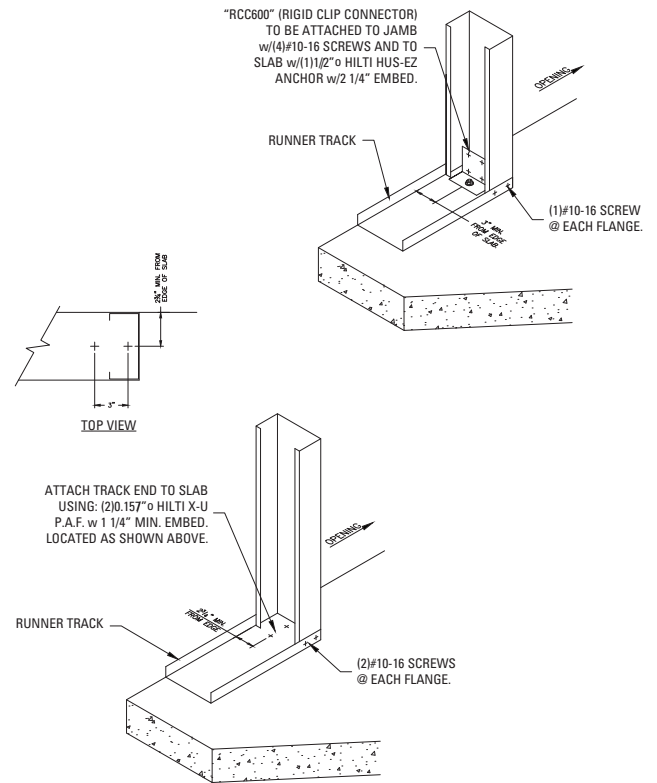
- Notes:
1. Tabulated values are based on #10-16 screws with ultimate shear capacity of 1,600 lbs per screw.
 2. Allowable loads have not been increased for wind or seismic.
 3. Use the squared interaction equations when QFC subjected to both vertical and lateral loads.
 4. Tabulated vertical loads are limited to max 1/8" vertical displacement of the clip.
 5. Up to 1/4" gap is permitted between the end of QF Header and the QF Jamb. Allowable vertical loads are listed for no gap and 1/4" gap. Linear interpolations is permitted for smaller gaps.

*1/4" GAP is the distance from the web of the QuickFrame Jamb to the end of the QuickFrame Header
Use 0" Gap values when the QuickFrame Header is tight against the QuickFrame Clip.

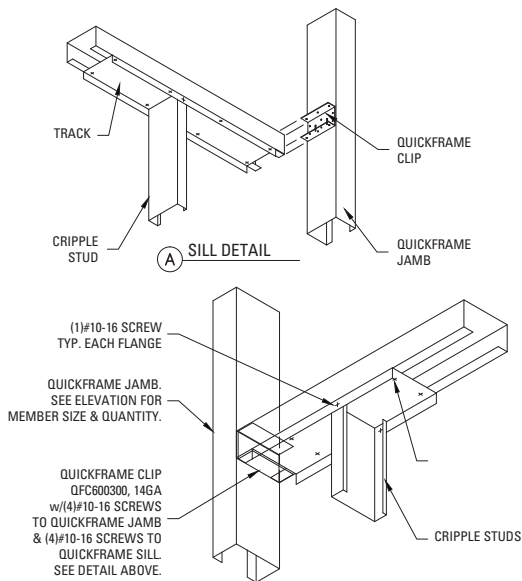
1. QUICKFRAME HEADER CONNECTION



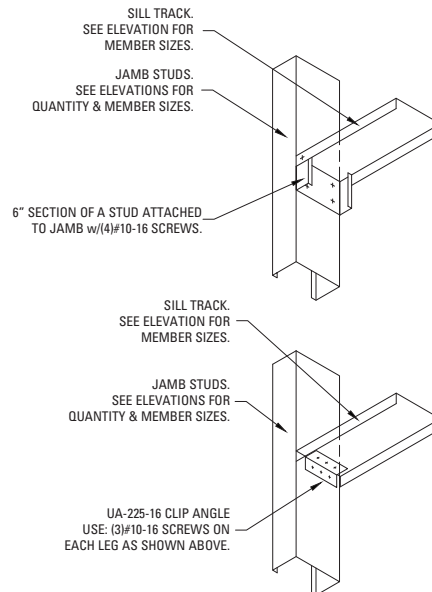
2. JAMB ANCHORAGE



3. QUICKFRAME SILL CONNECTION



4. SILL TRACK CONNECTION



YOUR SUCCESS DEPENDS ON QUALITY BUILDING PRODUCTS AND SO DOES OURS.

For over 30 years, Marino\WARE® , a division of Ware Industries, has provided customers with top quality cold-formed steel framing products.

We are committed to providing a superior customer experience through a vast selection of readily available products, a knowledgeable sales team, comprehensive technical support and services, prompt delivery through our fleet of trucks, and an extensive distribution network.

Our best-in-class product development team delivers innovative solutions to installation and cost challenges with products designed to save time, labor, and materials. In addition, we utilize the latest in roll forming techniques, maintain the latest level of technology available to the steel framing industry, and strictly adhere to all ASTM specifications.

Marino\WARE is 100% American-owned and operated. We take pride in creating local jobs, supporting local communities, and manufacturing products that reflect the uncompromising skill and ethics of our professional team. We operate state-of-the-art production facilities in New Jersey, Georgia, and Indiana, as well as a sales office in New York.

Visit MarinoWARE.com to experience our full line of innovative solutions.

For more information, please contact Marino\WARE® Technical Services at 866.545.1545

This technical information reflects the most current information available and supersedes any and all previous publications effective February 25, 2026 | MW-QuickFrame Catalog | © WARE Industries, Inc. 2026

Marino\WARE® operates state-of-the-art production facilities in New Jersey, Georgia, and Indiana, as well as a sales office in New York.

New Jersey Facility

400 Metuchen Road
South Plainfield, NJ 07080
800.627.4661
908.757.9000
Fax: 908.412.1442

Georgia Facility

777 Greenbelt Parkway
Griffin, GA 30223
800.504.8199
678.688.1312
Fax: 678.688.1379

Indiana Facility

4245 Railroad Avenue
East Chicago, IN 46312
866.636.6002
219.378.7100
Fax: 219.378.7106

New York Sales Office

51 John St. Ste. 1
Babylon, NY 11702
800.627.4667
631.691.2200
Fax: 631.691.1492

Marino\WARE® Design-Group™

100 Hendrick Drive, Suite 200
McDonough, GA 30253
866.545.1545
678.688.7780
Fax: 770.507.2605