



It's not magic, it's engineering.®

Impact and Airborne Sound Control

DISTRIBUTED BY

MARINO*WARE®

800.627.4661 | marinoware.com

GENIECLIP®

Sound Isolation Clips



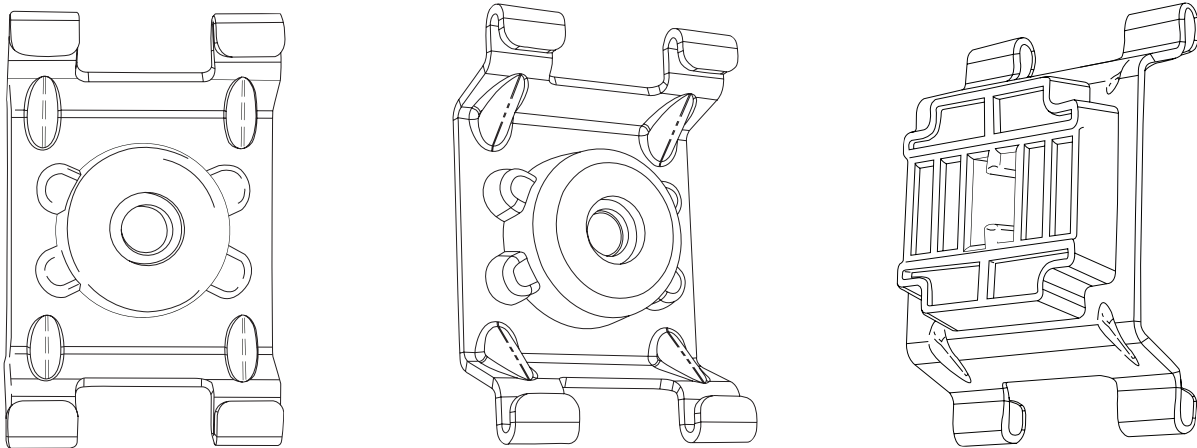
GENIECLIP®

Innovative and reliable sound isolation

PRODUCT OVERVIEW

Engineered for superior acoustical performance in reducing the transmission of airborne and impact sound through wall and floor-ceiling assemblies.

The **GenieClip RST** is a unibody molded rubber and galvanized steel mount used to attach gypsum wallboard (GWB) to either wall or floor-ceiling assemblies. Made from recycled components, and engineered to allow reduction in assembly weight, the **GenieClip** contributes to LEED® certified buildings.



ENGINEERED TO WORK



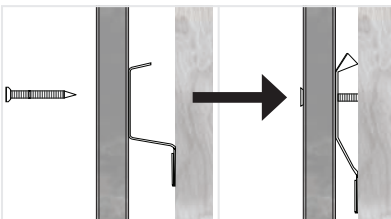
Only one screw required to attach **GenieClip RST** to wood or metal wall studs or floor joists



Engage standard 25 gauge drywall furring channel into either claw, then squeeze channel to engage the claw

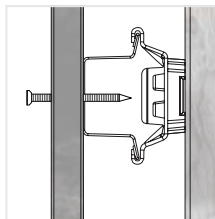
The **GenieClip® RST** is easy and fast to install using standard steel furring channel, and is extremely stable when held in place with a single fastener. There is nothing to adjust or site fit. The furring channel is simply snapped into the **GenieClip RST** and the gypsum wallboard can be immediately installed.

ENGINEERED TO BE FOOLPROOF



Resilient Channel Crushed

VS.

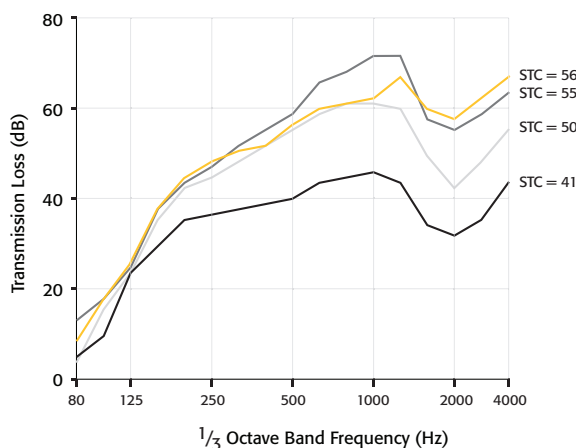


GenieClip RST

Resilient channel is commonly short circuited, whereas the **GenieClip RST** is impossible to short circuit.

ENGINEERED TO REDUCE SOUND TRANSMISSION

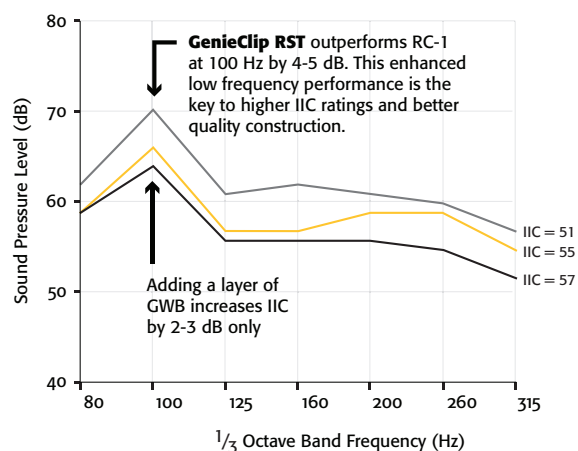
LOW FREQUENCY PERFORMANCE



■ **GenieClip RST**
■ RC-1
■ Double Stud
 ■ Direct Attach

* 3 5/8" metal stud wall, 1 layer of GWB on each side

WOOD TRUSS IIC COMPARISON

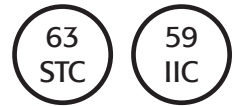
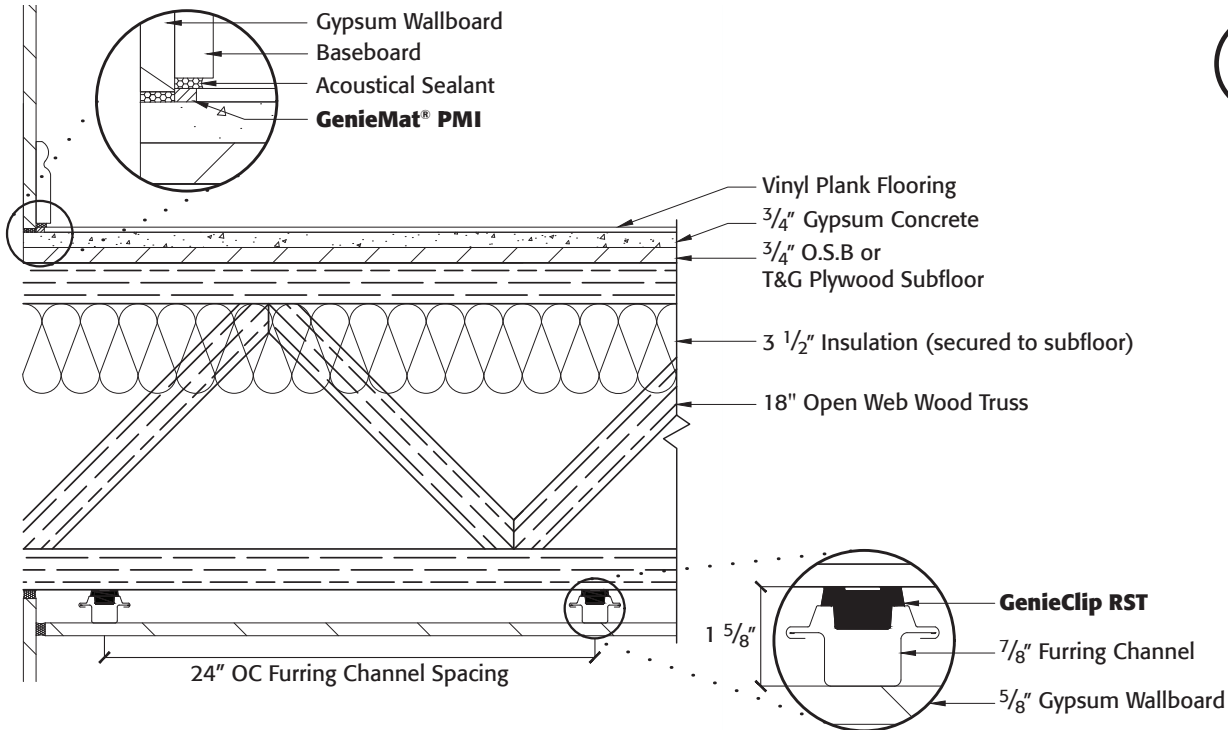


■ RC-1
■ **GenieClip RST with single layer GWB**
■ **GenieClip RST with double layer GWB**

FLOOR-CEILING ASSEMBLIES

OPEN-WEB WOOD TRUSSES

Wood Truss with GenieClip® RST and Gypsum Concrete

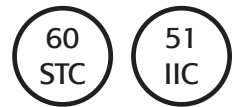
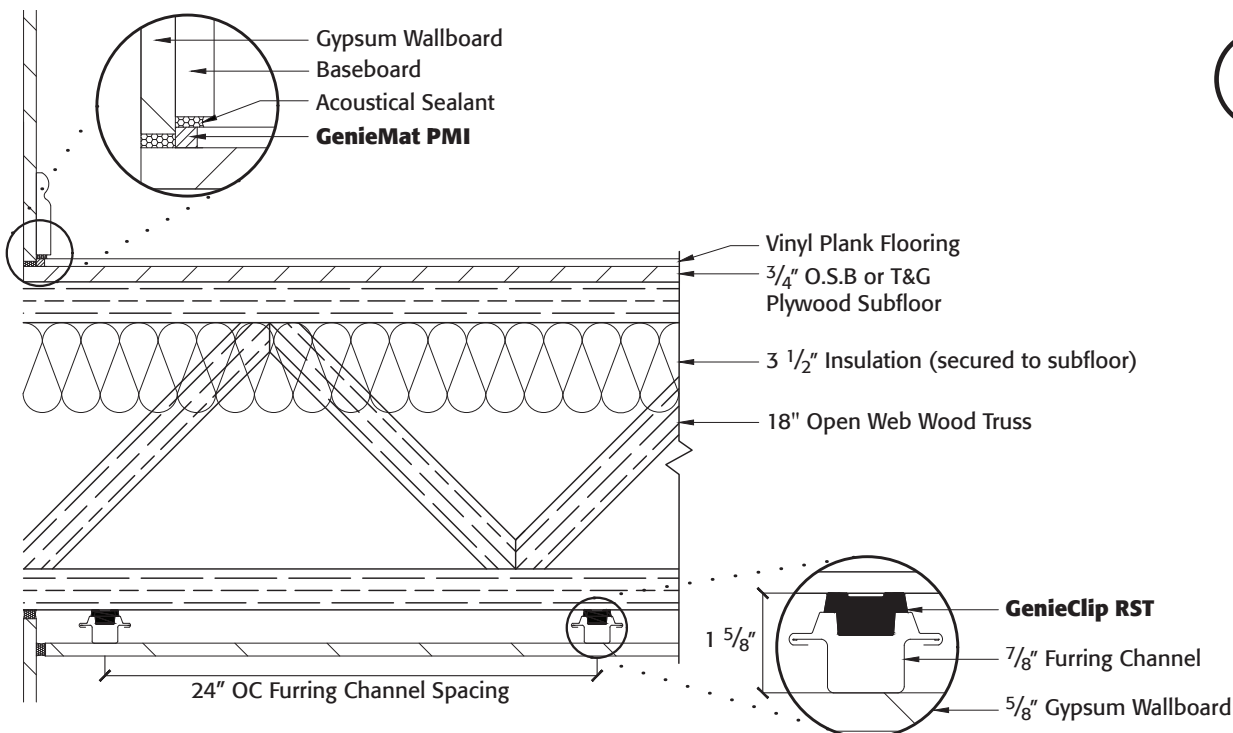


G0535.09



UL Assembly
L521, L528, etc.

Wood Truss with GenieClip RST and NO Gypsum Concrete



E5958.17

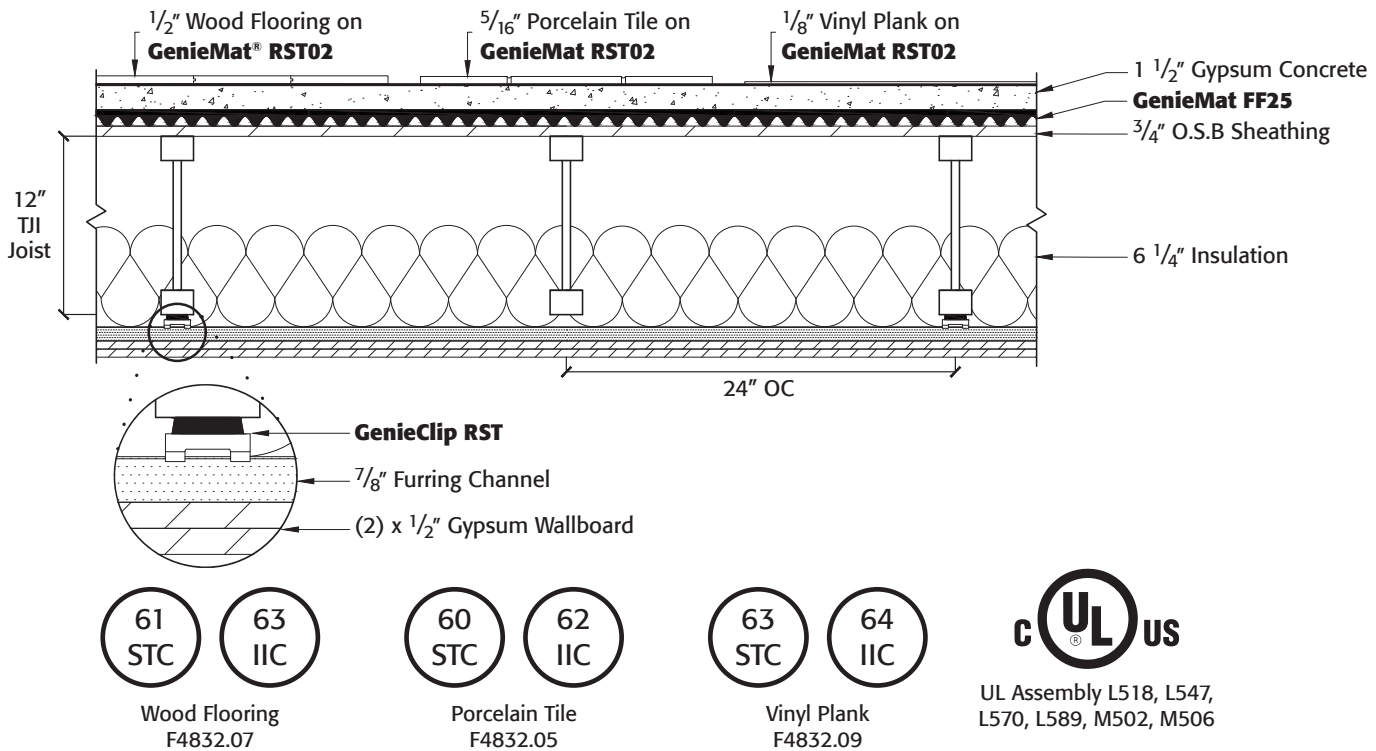


UL Assembly
L528

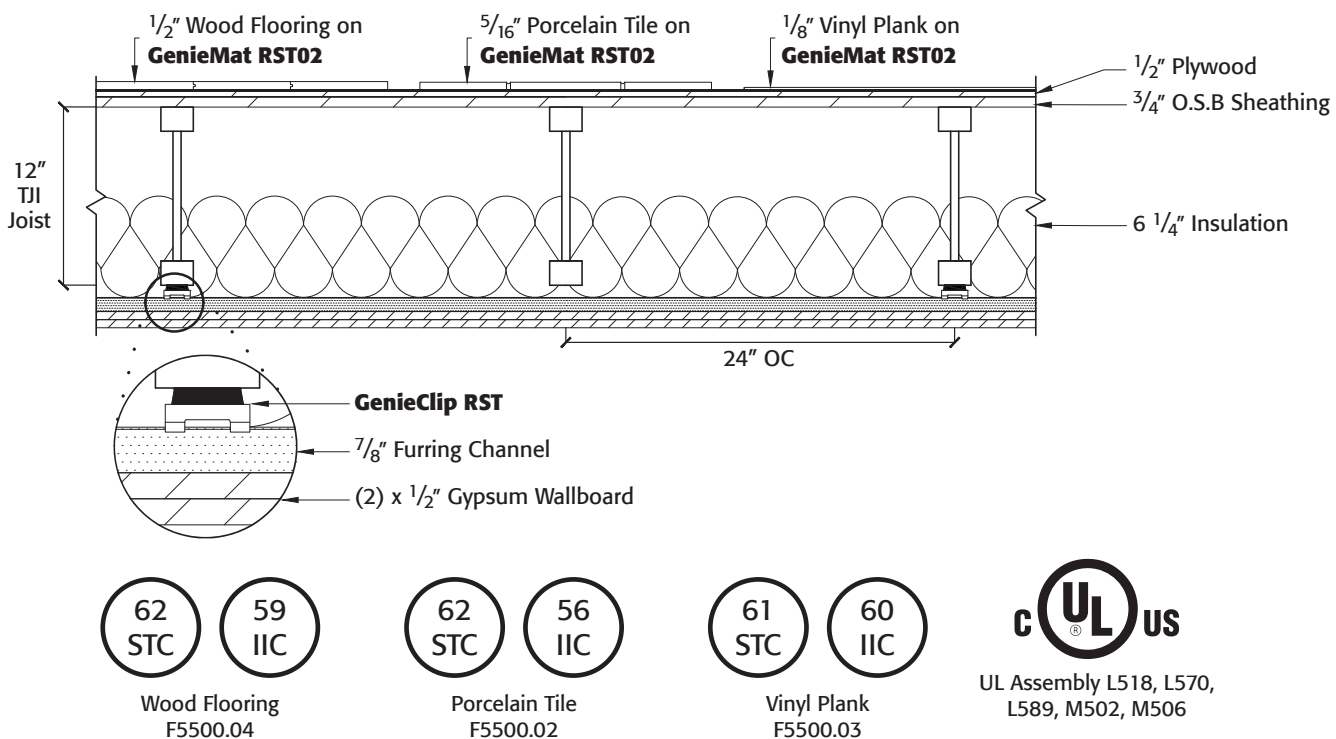
FLOOR-CEILING ASSEMBLIES

ENGINEERED JOISTS

TJI Floor Joist with GenieClip® RST and Gypsum Concrete



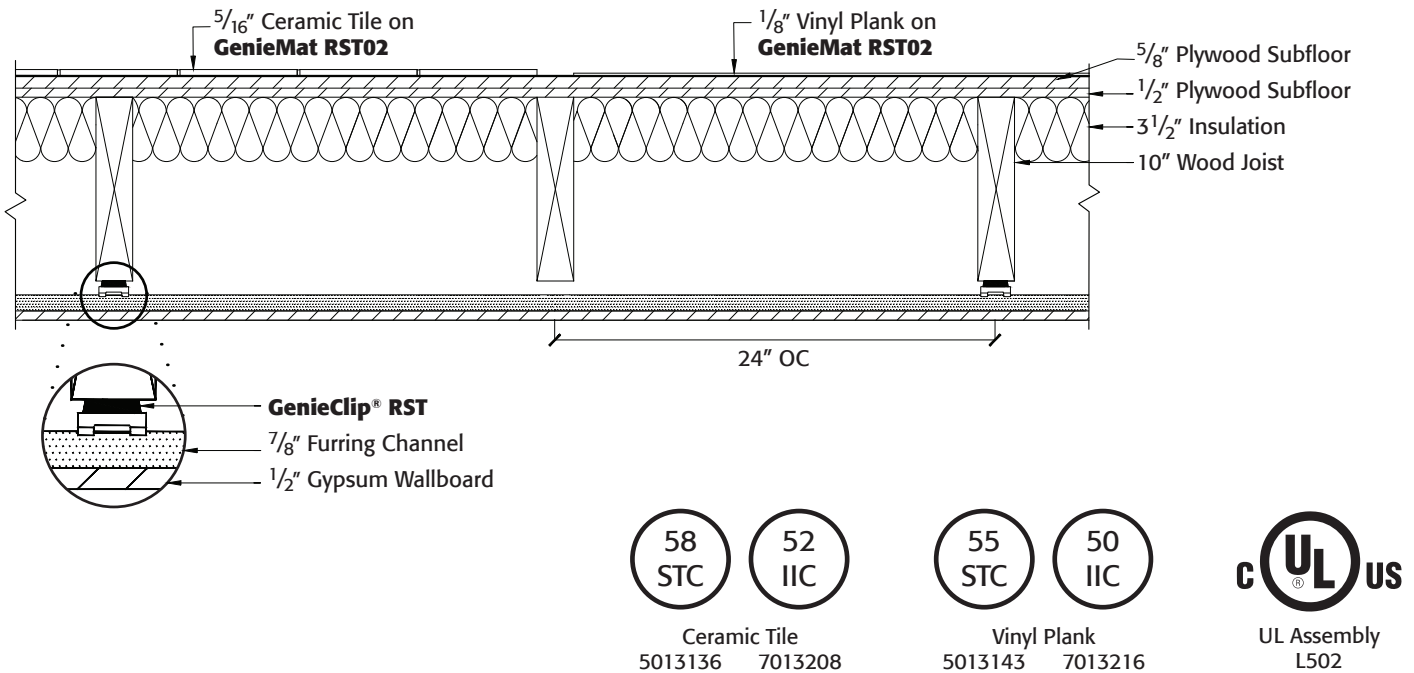
TJI Floor Joist with GenieClip RST and NO Gypsum Concrete



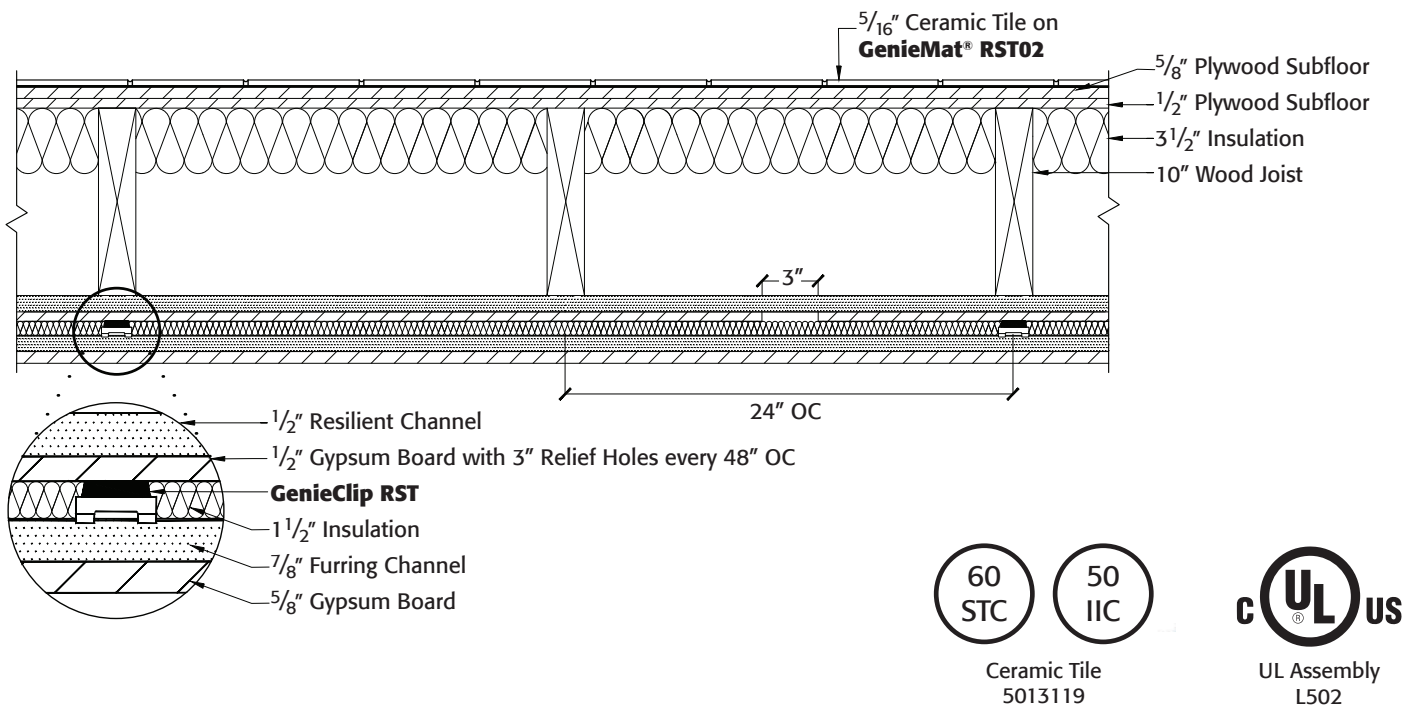
FLOOR-CEILING ASSEMBLIES

SOLID WOOD 2 X 10 JOIST

Solid Joist with No Gypsum Concrete



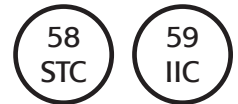
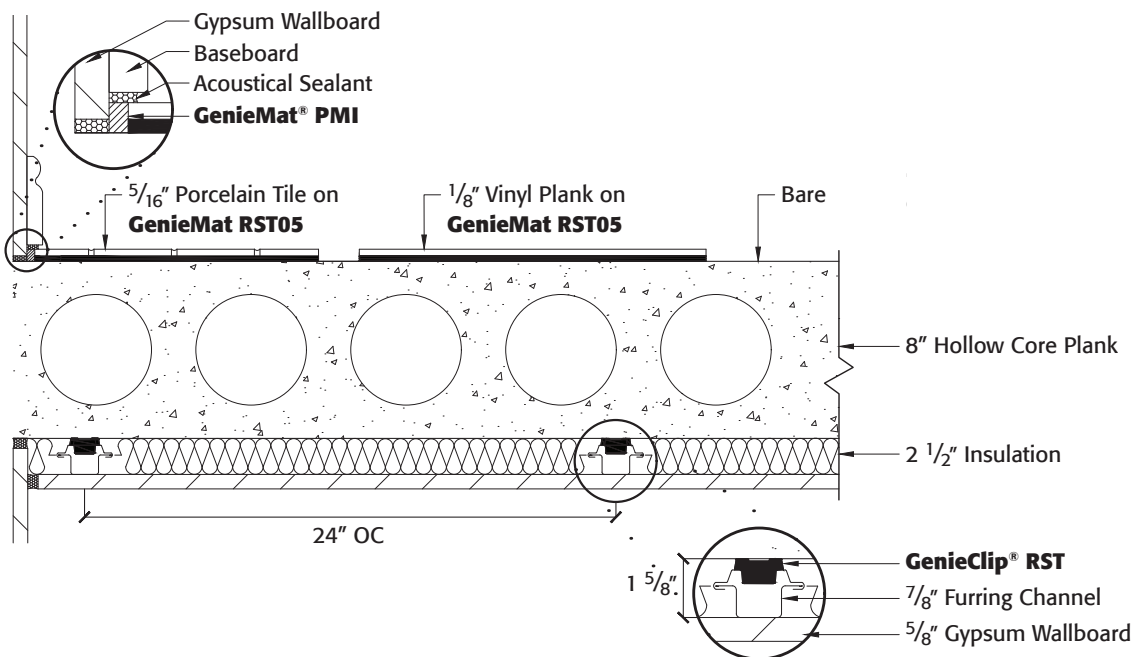
Solid Joist Retrofit Ceiling



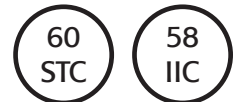
FLOOR-CEILING ASSEMBLIES

HOLLOW CORE PLANK

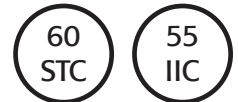
8" Hollow Core Plank



Porcelain Tile
F0223.08



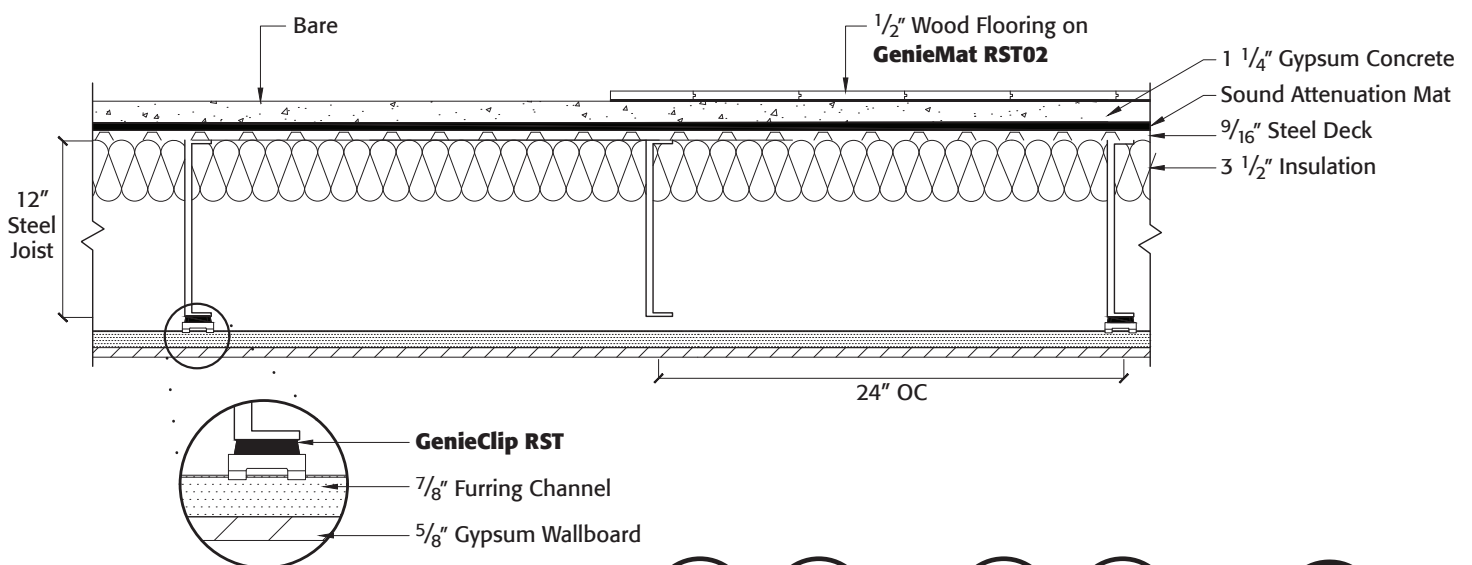
Vinyl Plank
F0223.05



Bare
F0223.06

STEEL FLOOR SYSTEMS

Steel Deck and Joist System



Bare
F2761.04



Wood Flooring
F2761.05

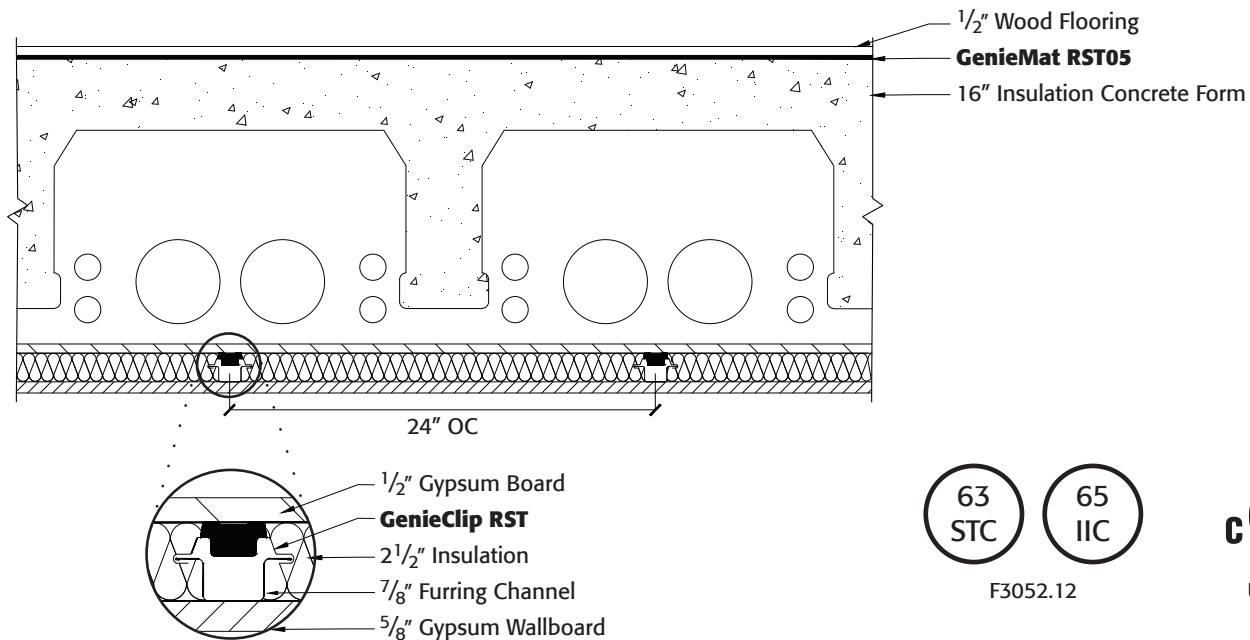


UL Assembly
G551

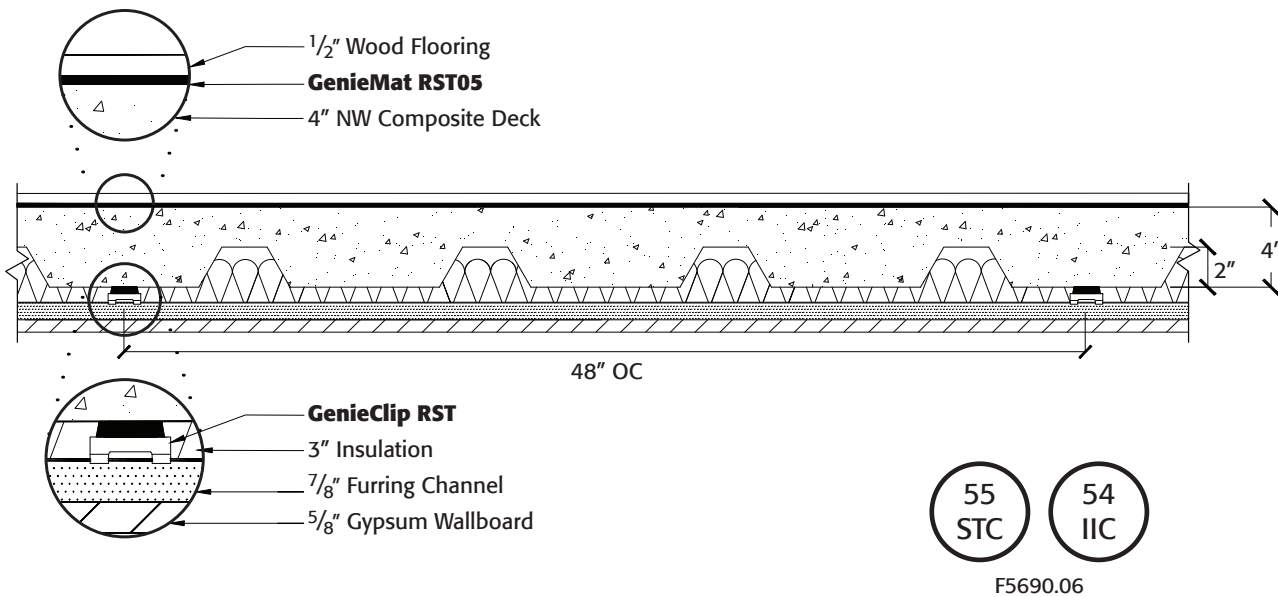
FLOOR-CEILING ASSEMBLIES

COMPOSITE FLOOR SYSTEMS

16" Insulated Concrete Form



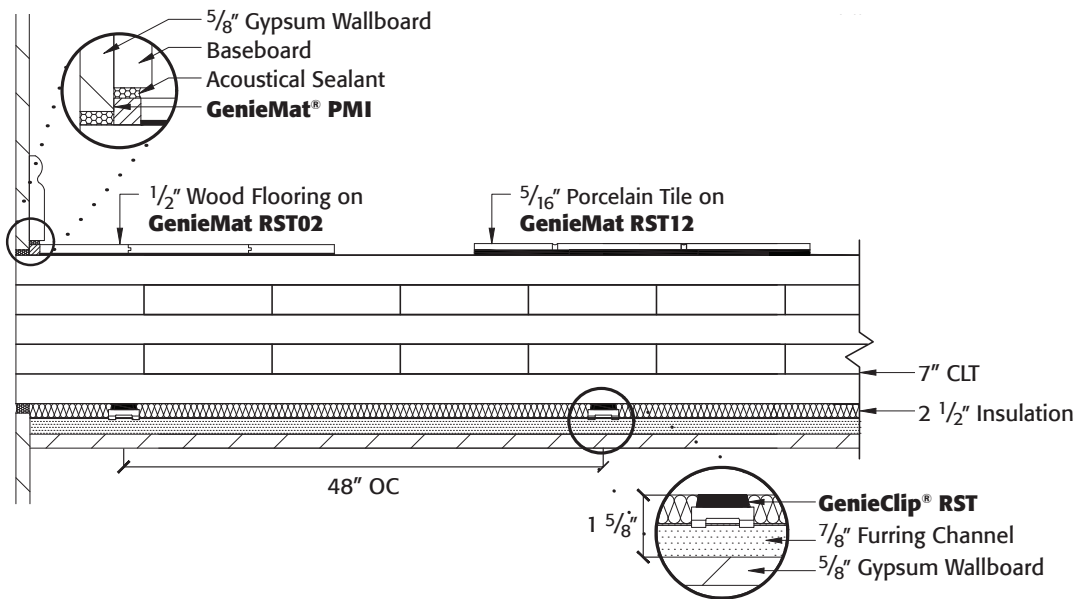
4" Normal Weight Composite Deck



FLOOR-CEILING ASSEMBLIES

TIMBER FLOORS

Cross Laminated Timber

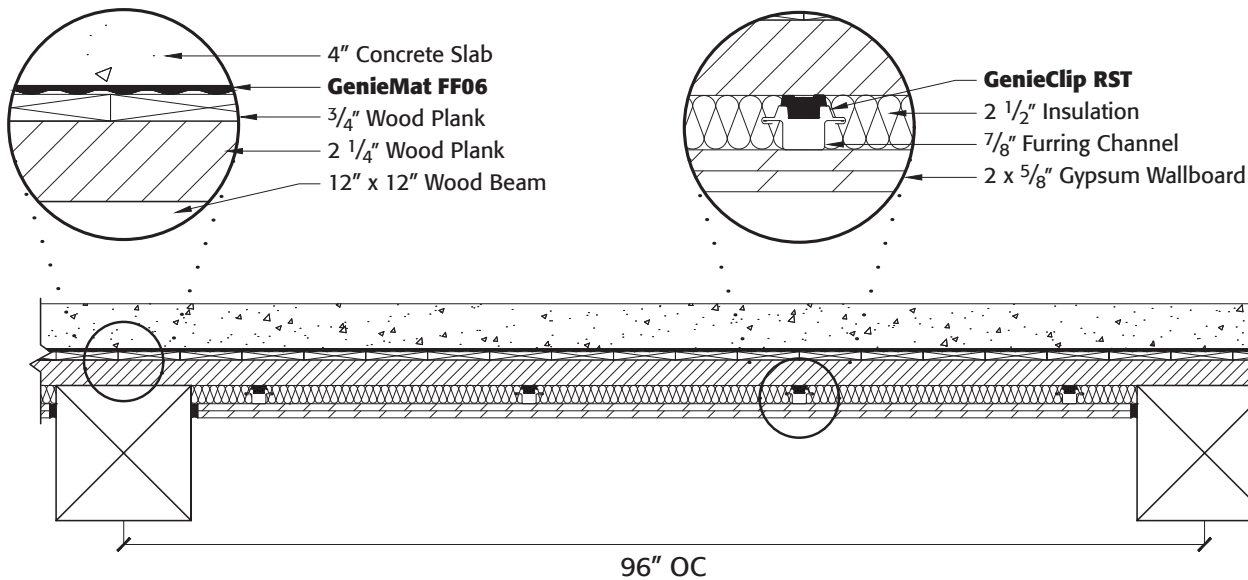


Wood Flooring
F2761.08



Porcelain Tile
F2761.09

Wood Beam and Plank



5015105

7015157

GENIECLIP® LB



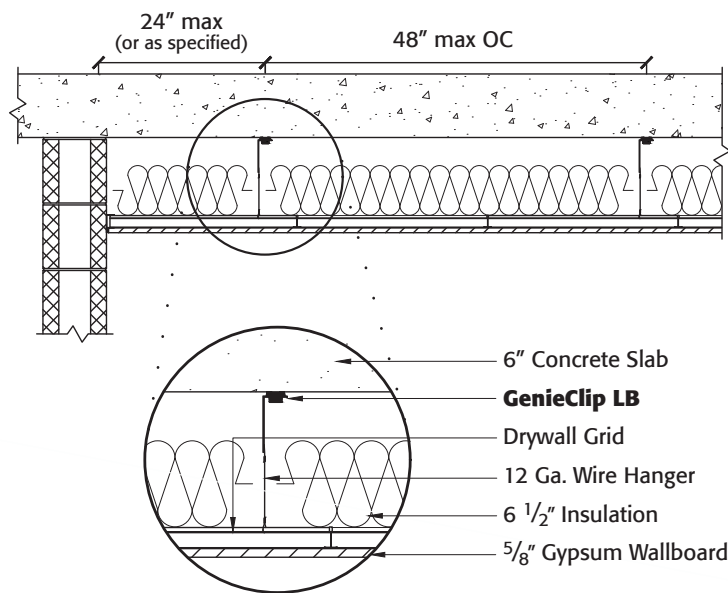
Resilient sound isolation bracket used in a variety of applications where structural support is required, including wall sway bracing, ceiling suspension, and accessory mounting.

Significantly improves low and high frequency sound control performance. Substantially reduces impact noise in floor-ceiling assemblies. Adaptable to a variety of sound control applications.

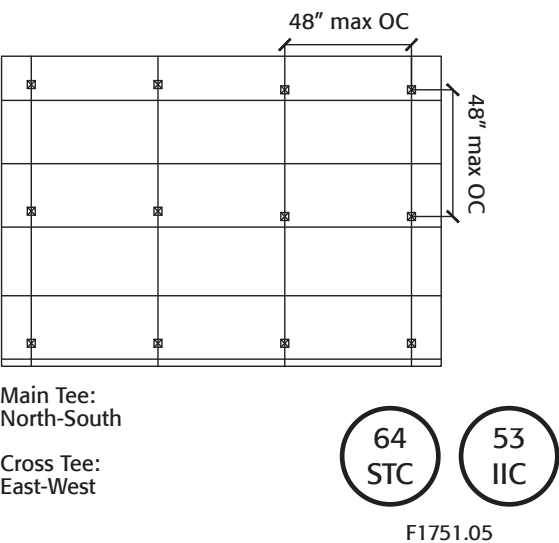
Can be installed from the ground using extended gas-powered tools for wire-suspended ceilings.

Isolated Wire Suspended Ceilings

PROFILE VIEW

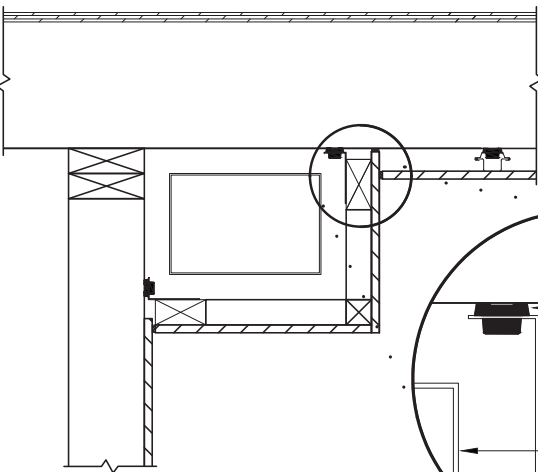


PLAN VIEW

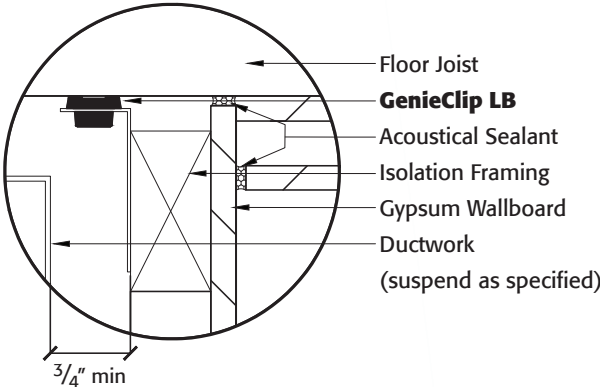
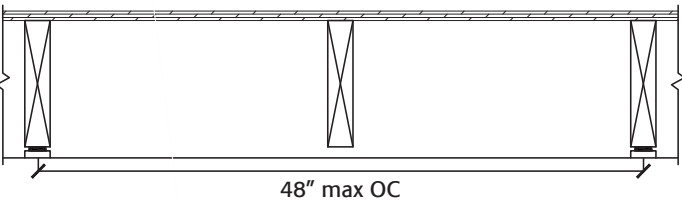


Isolated Framing for Bulkhead Mounting

PROFILE VIEW



FRONT VIEW



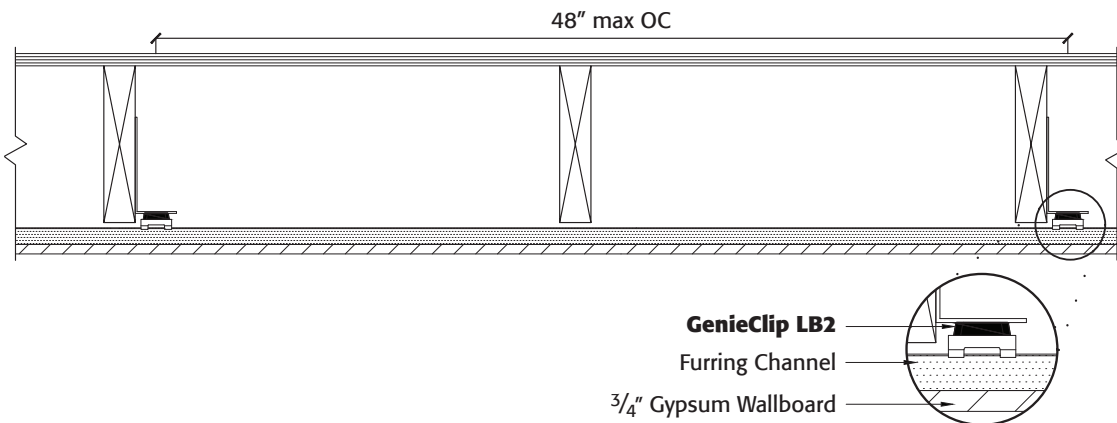
GENIECLIP® LB2



Resilient sound isolation clip with extended steel bracket used as a stand-alone system or in conjunction with a **GenieClip RST** wall or ceiling system. Extends or reduces the profile space between the gypsum wallboard layer and floor joists or wall studs and provides support at the wall termination of furring channels.

Improves low and high frequency sound control performance. Reduces impact noise in floor-ceiling assemblies. Allows for thinner and even no resilient mat used in certain floor-ceiling assemblies.

Levelling a Wood Joist Ceiling

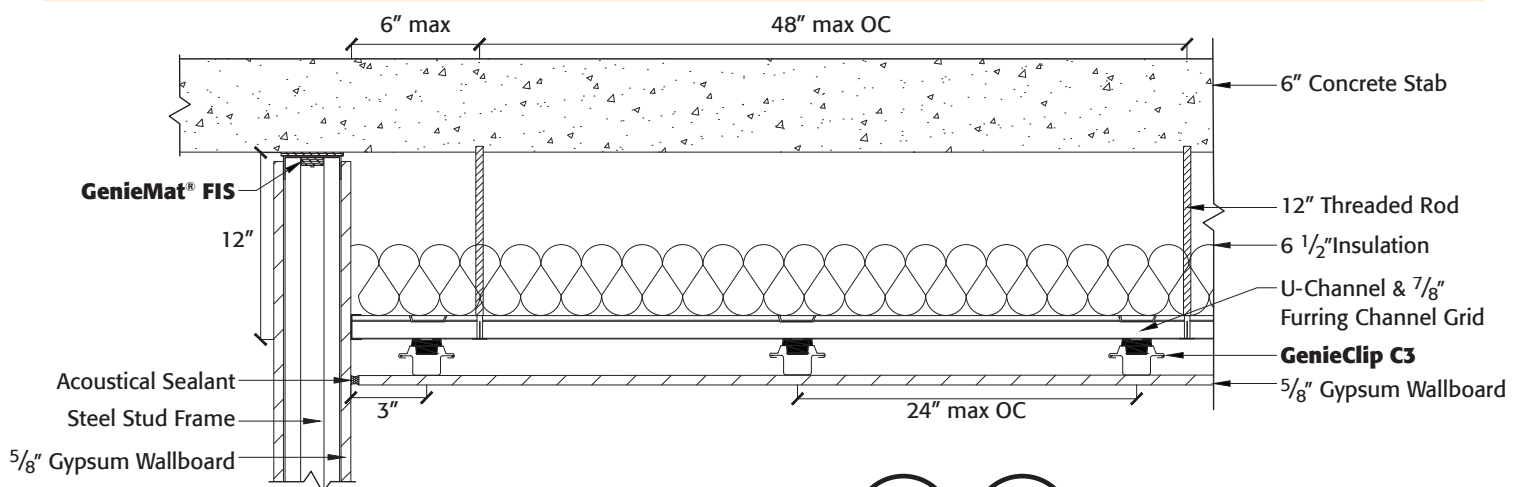


GENIECLIP C3



Ideal for use with threaded rod (black iron) suspended ceilings or when wire isolation cannot be achieved at the structural deck interface.

Isolation of Threaded Rod Ceiling



F1751.02

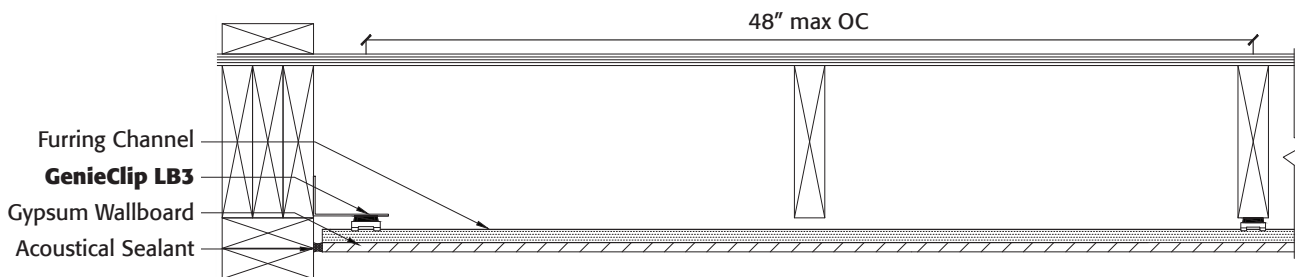
GENIECLIP® LB3



Resilient sound isolation clip with extended steel bracket used as a stand-alone system or in conjunction with a **GenieClip RST** wall or ceiling system. Extends or reduces the profile space between the gypsum wallboard layer and floor joists or wall studs and provides support at the wall termination of furring channels.

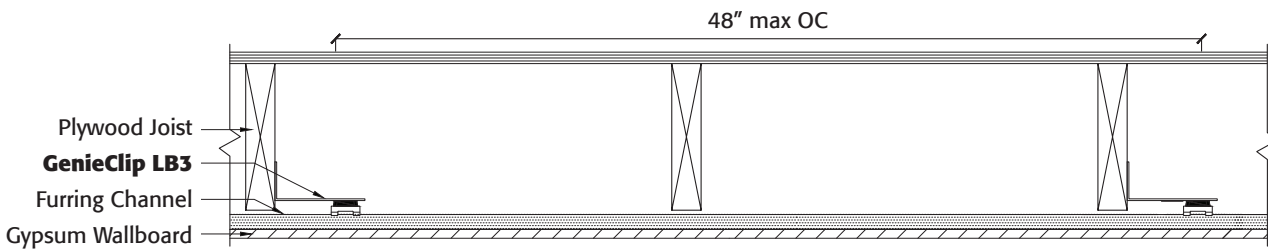
Improves low and high frequency sound control performance. Reduces impact noise in floor-ceiling assemblies. Allows for thinner and even no resilient mat used in certain floor-ceiling assemblies.

Eliminate Perimeter Blocking

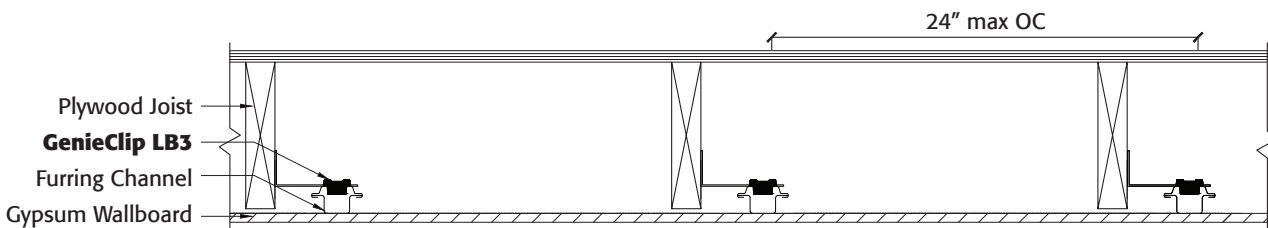


Using the **GenieClip LB3** at the perimeter of an isolated ceiling can eliminate the need for additional wood blocking.

Maximize Ceiling Height



To maximize ceiling height, use the **GenieClip LB3** side-mounted on wood frame construction.



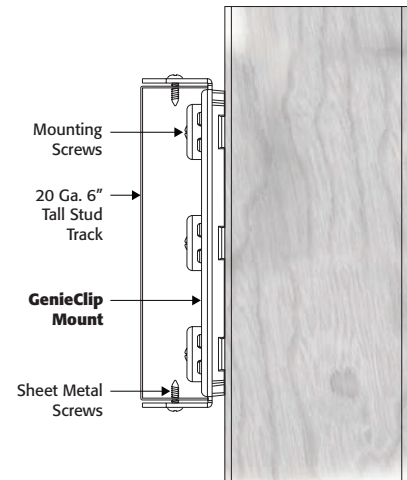
By installing the furring channel parallel to the joist, the **GenieClip LB3** can maximize ceiling height while maintaining isolation.

GENIECLIP® MOUNT

RESILIENT SOUND ISOLATION CLIP FOR HEAVY MOUNTING

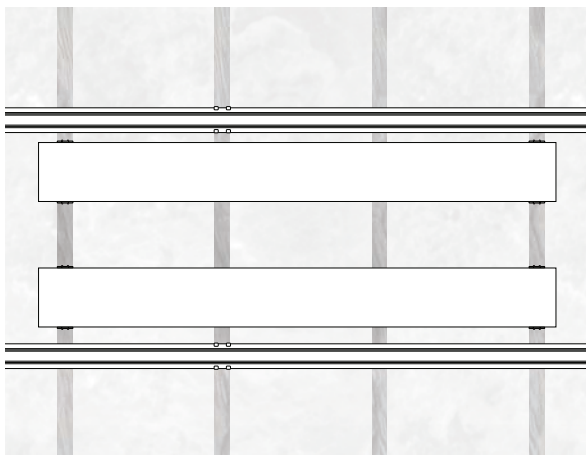
The **GenieClip Mount** is a resilient unibody molded rubber and steel bracket used for sound isolation in a variety of applications where superior structural support is required for installation, such as TVs, kitchen cabinets, headboards, garage door openers, various medical equipment, and handrails.

The **GenieClip Mount** supports, in shear and tension, a piece of 6" metal stud track at the same depth as the resiliently isolated drywall furring channel.

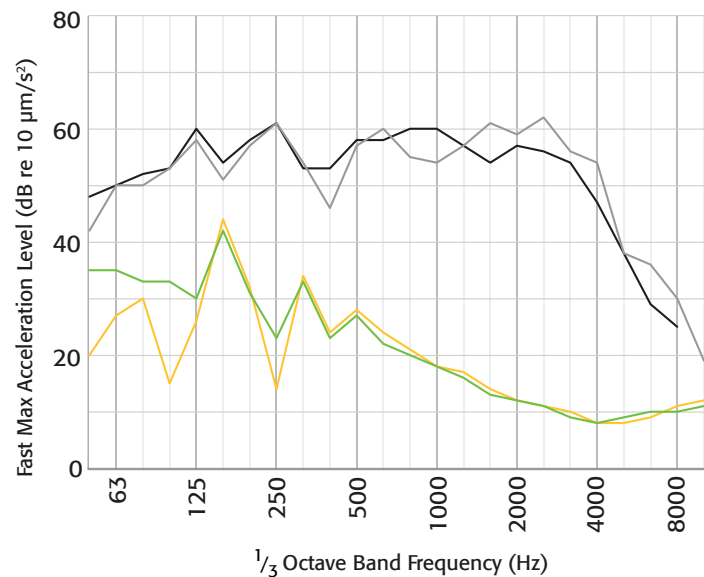


ADVANTAGES

Significantly improves low and high frequency sound control performance. Substantially reduces impact noise from fixtures mounted on walls and ceilings. Easily fastens to standard 6" metal stud track.



Front view of installed **GenieClip Mount** and metal stud track.



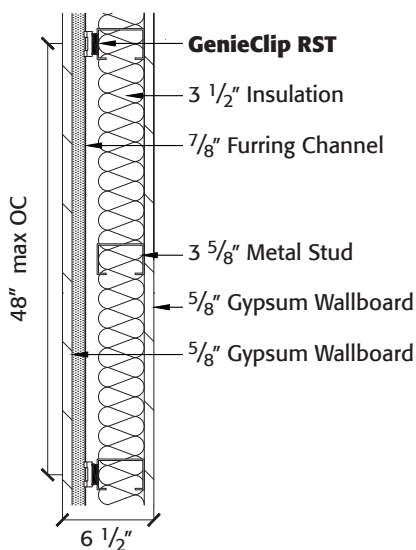
- Accelerometer 1 directly attached to drywall at stud (62 dBA)
- Accelerometer 2 directly attached to drywall between studs (64 dBA)
- GenieClip Mount** assembly. Accelerometer 1 directly attached to drywall at stud (29 dBA)
- GenieClip Mount** assembly. Accelerometer 2 directly attached to drywall between studs (27 dBA)

Vibration level on receiver room side of wall due to kitchen cabinet door slams with and without **GenieClip Mounts**.

WALL ASSEMBLIES

METAL STUD

GenieClip® RST with 2 Layers

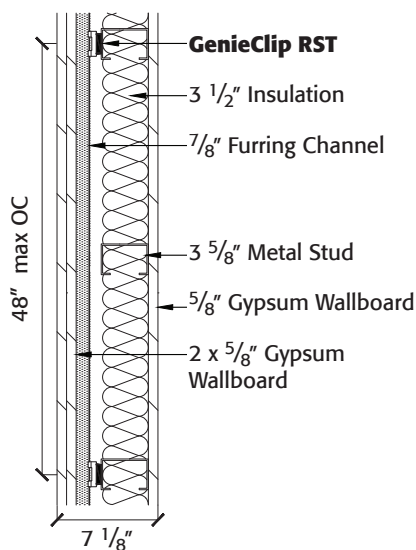


TL07-620



UL Assembly
U419, U423

GenieClip RST with 3 Layers

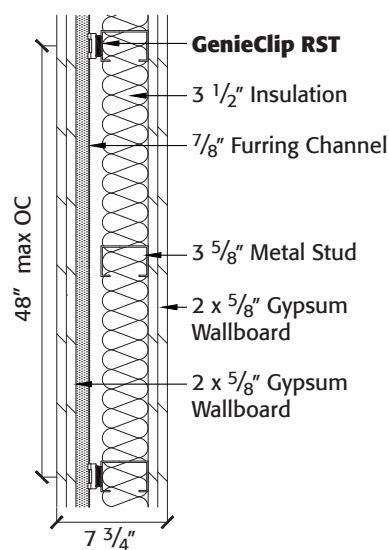


TL07-617



UL Assembly
U419, U423

GenieClip RST with 4 Layers



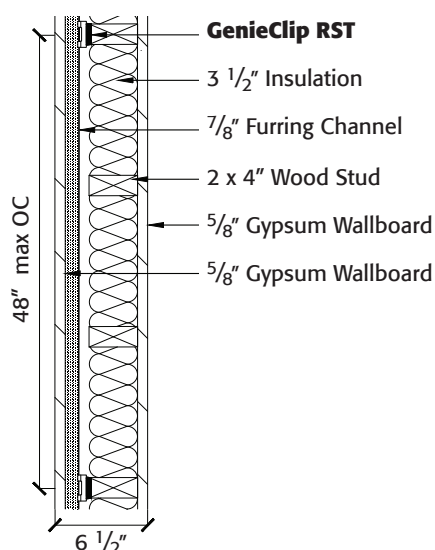
TL07-618



UL Assembly
U419, U423

WOOD STUD

GenieClip RST with 2 Layers

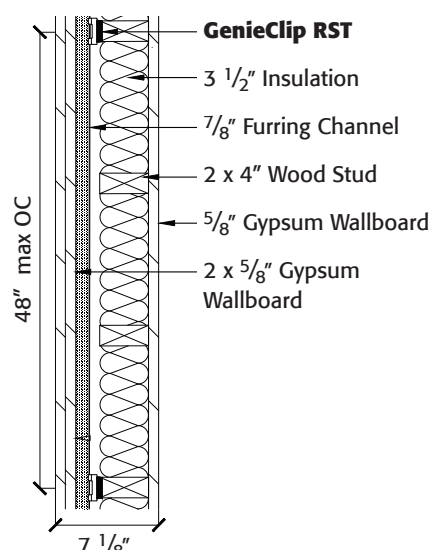


TL07-673



UL Assembly
U305

GenieClip RST with 3 Layers

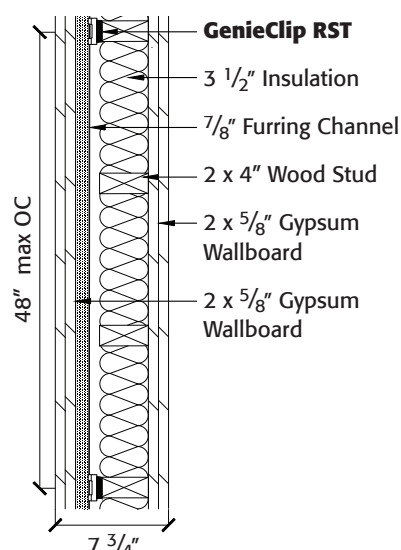


TL07-672



UL Assembly
U305

GenieClip RST with 4 Layers



TL07-670

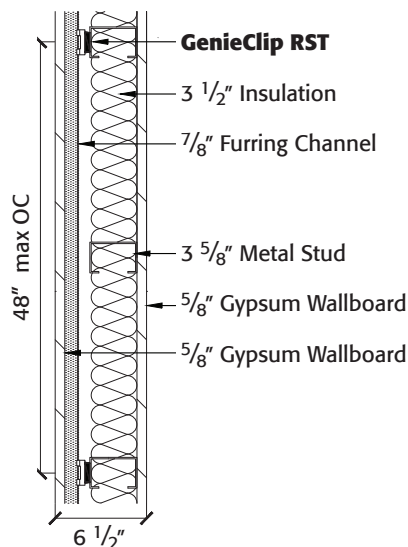


UL Assembly
U305

WALL ASSEMBLIES

ENGINEERED PARTITIONS

NEW WAY with GenieClip® RST

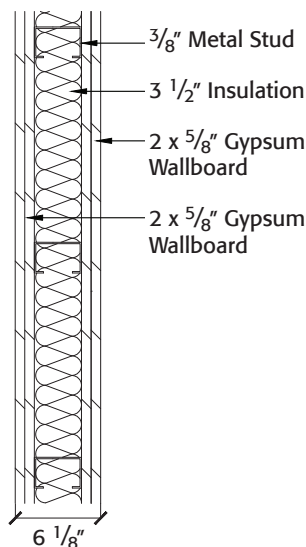


TL07-620



UL Assembly
U419, U423

OLD WAY with 4 Layers

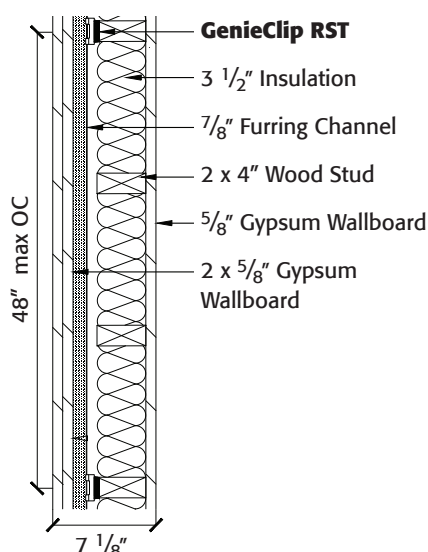


TL07-616



UL Assembly
U419, U423

NEW WAY with GenieClip RST

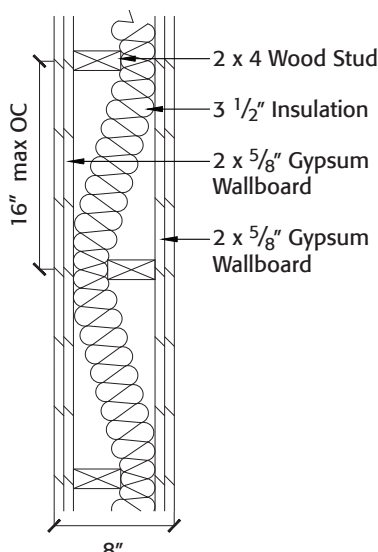


TL07-672



UL Assembly
U305

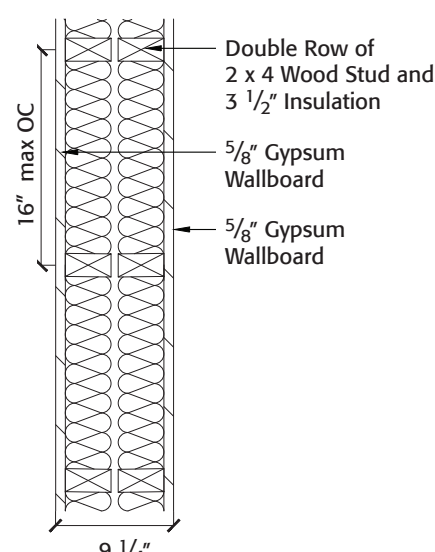
OLD WAY with Staggered or Double Studs (Metal or Wood)



TL11-121



UL Assembly
U340



TL11-120

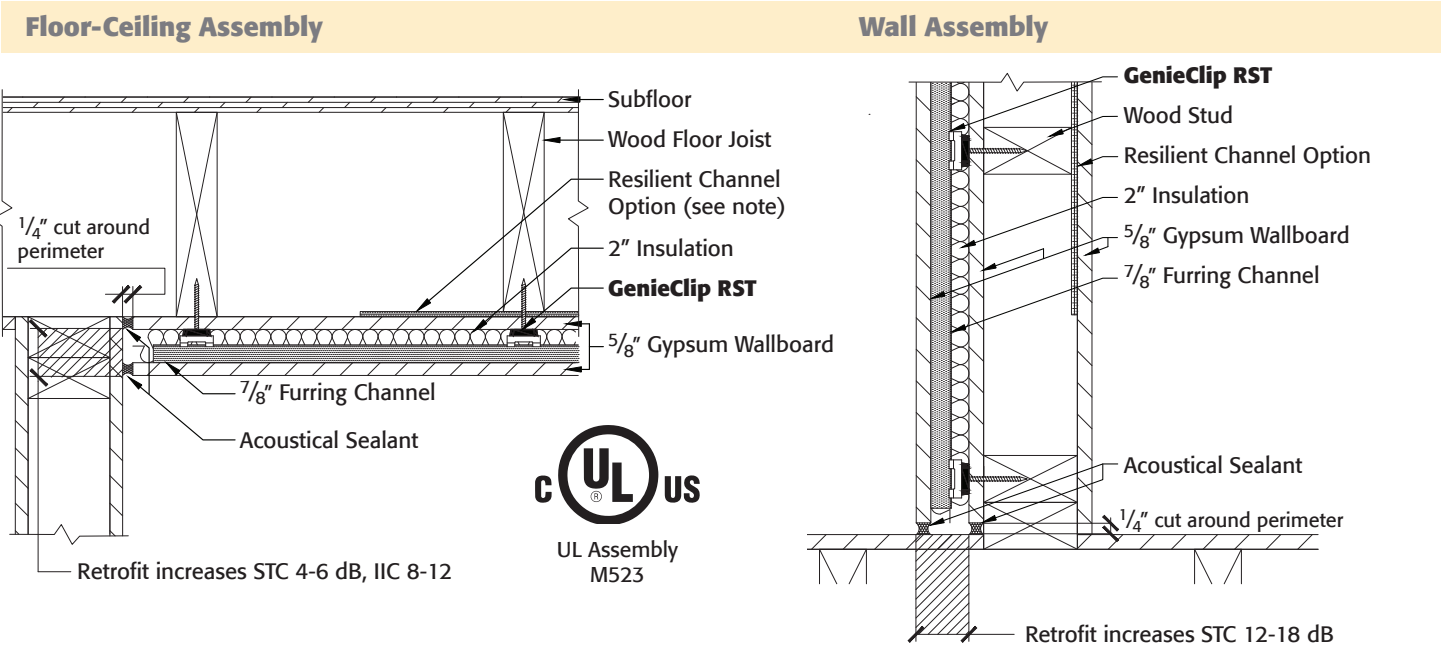


UL Assembly
U341

RETROFIT ASSEMBLIES

GENIECLIP® BENEFITS

- Increase IIC by 8-12 dB in floor ceiling retrofit assemblies
- Increase STC by 12-18 dB in wall retrofit assemblies
- Retrofit directly to existing ceiling or wall
- Greater STC than other popular retrofit solutions



Note: Resilient channel failure is a common observation by Acoustical Engineers. Short circuited resilient channel results in up to a 10 STC point reduction.

LoVerde, J., & Dong, W. (2009). Quantitative comparisons of resilient channel designs and installation methods.

THE GENIECLIP IS PROVEN TO:

- Meet building codes for fire and sound
- Prevent costly litigation and reconstruction

| Importance of Engineered Elastomer | | | |
|------------------------------------|-----------|-------------------|------|
| Isolation Clip | Durometer | Dynamic Stiffness | STC* |
| GenieClip RST | 37 | 11.3 N/mm | 57 |
| Isomax™ | 56 | 21.6 N/mm | 57** |
| RSIC-1® | 57 | 21.2 N/mm | 56 |
| RSIC-V® | No Rubber | No Rubber | 52 |

*2x4 wood stud 16" OC, 1 layer of 5/8" Type X GWB on each side with 3 1/2" insulation

** Test conducted with 5 1/2" insulation

TEST RESULTS

| FLOOR-CEILING ASSEMBLIES | | | | | | | |
|--------------------------|---|-----------------------|----------------|--------------------------|--|-----------------------|------------------------|
| TEST REPORT NUMBER | CEILING TYPE | STRUCTURE | FINISH FLOOR | UNDERLAYMENT | SUBFLOOR | STC RATING (ASTM E90) | IIC RATING (ASTM E492) |
| G0535.08 | 1/2" RC Deluxe, 5/8" GWB Type C | Open Web Truss | Vinyl Plank | GenieMat® RST02PS | 3/4" Gypsum, 3/4" OSB | 60 | 50 |
| G0535.09 | GenieClip® RST , 5/8" GWB Type C | Open Web Truss | Vinyl Plank | GenieMat RST02PS | 3/4" Gypsum, 3/4" OSB | 63 | 59 |
| G1707.07 | GenieClip RST , 5/8" GWB Type C | Open Web Truss | Porcelain Tile | GenieMat RST02PS | 3/4" Gypsum, 3/4" OSB | 62 | 54 |
| G1707.08 | GenieClip RST , 5/8" GWB Type C | Open Web Truss | Wood | GenieMat FF06 | 3/4" Gypsum, 3/4" OSB | 62 | 60 |
| E5958.16 | GenieClip RST , 5/8" GWB Type C | Open Web Truss | Vinyl Plank | GenieMat RST05 | 3/4" OSB | 60 | 55 |
| E5958.17 | GenieClip RST , 5/8" GWB Type C | Open Web Truss | Vinyl Plank | None | 3/4" OSB | 60 | 51 |
| F4832.12 | GenieClip RST , 2x 1/2" GWB Type C | Engineered Joist | None | None | 1 1/2" Gypsum, GenieMat FF25 , 3/4" OSB | 61 | 59 |
| F4832.14 | GenieClip RST , 2x 1/2" GWB Type C | Engineered Joist | Wood | GenieMat RST02 | 1/2" Plywood, 3/4" OSB | 58 | 61 |
| F4832.18 | GenieClip RST , 2x 1/2" GWB Type C | Engineered Joist | Porcelain Tile | GenieMat RST02 | 1/2" Plywood, 3/4" OSB | 59 | 55 |
| F5500.03 | GenieClip RST , 2x 1/2" GWB Type C | Engineered Joist | Vinyl Plank | GenieMat RST02 | 1/2" Plywood, 3/4" OSB | 61 | 60 |
| F5500.05 | GenieClip RST , 2x 1/2" GWB Type C | Engineered Joist | Carpet | None | 1/2" Plywood, 3/4" OSB | 61 | 82 |
| 5013136 7013208 | GenieClip RST , 1/2" GWB Type C | 2x10 Solid Wood Joist | Ceramic Tile | GenieMat RST02 | 5/8" Plywood, 1/2" Plywood | 58 | 52 |
| 5013143 7013216 | GenieClip RST , 1/2" GWB Type C | 2x10 Solid Wood Joist | Vinyl Plank | GenieMat RST02 | 5/8" Plywood, 1/2" Plywood | 55 | 50 |
| 5013119 7013183 | GenieClip RST Retrofit | 2x10 Solid Wood Joist | Ceramic Tile | GenieMat RST02 | 5/8" Plywood, 1/2" Plywood | 60 | 50 |
| 5014139 7014190 | GenieClip RST , 1/2" GWB Type C | 2x10 Solid Wood Joist | None | GenieMat RST02 | 3/4" Gypsum, GenieMat FF06 , 5/8" Plywood | 59 | 52 |

* RC Deluxe is a brand of resilient bar

TEST RESULTS

| FLOOR-CEILING ASSEMBLIES | | | | | | | |
|--------------------------|--|-----------------------------|----------------|-------------------------|---|-----------------------|------------------------|
| TEST REPORT NUMBER | CEILING TYPE | STRUCTURE | FINISH FLOOR | UNDERLAYMENT | SUBFLOOR | STC RATING (ASTM E90) | IIC RATING (ASTM E492) |
| E5958.05 | 6" Drop Ceiling, GenieClip® LB , 5/8" GWB Type X | 7" CLT | None | None | 2x 11/16" AdvanTech Wood Subfloor, GenieMat® FF25 | 61 | 55 |
| E5958.07 | 12" Drop Ceiling, GenieClip LB , 5/8" GWB Type X | 7" CLT | Vinyl Plank | GenieMat RST05 | None | 58 | 58 |
| F2761.08 | GenieClip RST , 5/8" GWB Type C | 7" CLT | Wood | GenieMat RST02 | None | 54 | 50 |
| F2761.09 | GenieClip RST , 5/8" GWB Type C | 7" CLT | Porcelain Tile | GenieMat RST12 | None | 55 | 51 |
| F3052.11 | 1/2" Gypsum, GenieClip RST , 5/8" GWB Type X | 16" Insulated Concrete Form | None | None | None | 64 | 55 |
| F3052.12 | 1/2" Gypsum, GenieClip RST , 5/8" GWB Type X | 16" Insulated Concrete Form | Wood | GenieMat RST05 | 1 1/4" Gypsum, 9/16" Steel Deck | 63 | 65 |
| F2761.04 | GenieClip RST , 5/8" GWB Type C | 10" Steel Joist | None | 3/8" Sound Mat | 3/4" Concrete Panel | 59 | 52 |
| F5689.18 | GenieClip RST , 2x 5/8" GWB Type C | 10" Steel Joist | Porcelain Tile | GenieMat RST12 | None | 62 | 50 |
| F5689.20 | GenieClip RST , 2x 5/8" GWB Type C | 10" Steel Joist | Vinyl Plank | GenieMat RST02 | None | 60 | 52 |
| F5689.05 | GenieClip RST , 5/8" GWB Type C | 4" Composite Deck | Vinyl Plank | GenieMat RST02 | None | 54 | 55 |
| F5689.06 | GenieClip RST , 5/8" GWB Type C | 4" Composite Deck | Wood | GenieMat RST05 | None | 55 | 54 |
| F0223.05 | GenieClip RST , 5/8" GWB Type C | 8" Hollow Core Plank | Vinyl Plank | GenieMat RST05 | None | 60 | 58 |
| F0223.06 | GenieClip RST , 5/8" GWB Type C | 8" Hollow Core Plank | None | None | None | 60 | 55 |
| F0223.08 | GenieClip RST , 5/8" GWB Type C | 8" Hollow Core Plank | Porcelain Tile | GenieMat RST05 | None | 58 | 59 |
| F1751.01 | 12" Drop Ceiling, 5/8" GWB Type C | 6" Concrete Slab | None | None | None | 63 | 42 |
| F1751.02 | 12" Drop Ceiling, GenieClip C3 , 5/8" GWB Type C | 6" Concrete Slab | None | None | None | 63 | 52 |
| F1751.05 | 12" Drop Ceiling, GenieClip LB , 5/8" GWB Type C | 6" Concrete Slab | None | None | None | 64 | 53 |
| F1751.03 | 12" Drop Ceiling, GenieClip C3 , 5/8" GWB Type C | 6" Concrete Slab | Wood | GenieMat RST05 | None | 62 | 68 |
| F1751.04 | 12" Drop Ceiling, GenieClip LB , 5/8" GWB Type C | 6" Concrete Slab | Wood | GenieMat RST05 | None | 63 | 69 |
| F9365.07 | 6" Drop Ceiling, GenieClip LB , 5/8" GWB Type C | 6" Concrete Slab | Vinyl Plank | GenieMat RST02PS | None | 62 | 60 |

TEST RESULTS

| STEEL STUD WALL ASSEMBLIES | | | | | | |
|----------------------------|-------------------------|-------------------------------------|--------------------------|----------------|-----------------|-----------------|
| TEST REPORT NUMBER | PRODUCT | STEEL STUD WALL STRUCTURE | GWB LAYERS (5/8" TYPE X) | TL @80 Hz (dB) | TL @100 Hz (dB) | STC (ASTM E413) |
| TL07-614 | None | 20 Ga., 3 5/8" wide spaced 24" O.C. | 1x1 | 14 | 18 | 41 |
| TL07-620 | GenieClip® RST | 20 Ga., 3 5/8" wide spaced 24" O.C. | 1x1 | 17 | 25 | 56 |
| TL07-625 | RC Deluxe® | 20 Ga., 3 5/8" wide spaced 24" O.C. | 1x1 | 13 | 23 | 50 |
| TL07-629 | RSIC-1® | 20 Ga., 3 5/8" wide spaced 24" O.C. | 1x1 | 15 | 24 | 54 |
| TL07-633 | RSIC-V® | 20 Ga., 3 5/8" wide spaced 24" O.C. | 1x1 | 12 | 23 | 51 |
| TL07-615 | None | 20 Ga., 3 5/8" wide spaced 24" O.C. | 2x1 | 16 | 23 | 45 |
| TL07-626 | RC Deluxe® | 20 Ga., 3 5/8" wide spaced 24" O.C. | 2x1 | 19 | 30 | 55 |
| TL07-617 | GenieClip RST | 20 Ga., 3 5/8" wide spaced 24" O.C. | 2x1 | 24 | 31 | 60 |
| TL07-630 | RSIC-1® | 20 Ga., 3 5/8" wide spaced 24" O.C. | 2x1 | 22 | 32 | 60 |
| TL07-634 | RSIC-V® | 20 Ga., 3 5/8" wide spaced 24" O.C. | 2x1 | 17 | 29 | 56 |
| TL07-616 | None | 20 Ga., 3 5/8" wide spaced 24" O.C. | 2x2 | 18 | 24 | 49 |
| TL07-627 | RC Deluxe® | 20 Ga., 3 5/8" wide spaced 24" O.C. | 2x2 | 28 | 36 | 60 |
| TL07-618 | GenieClip RST | 20 Ga., 3 5/8" wide spaced 24" O.C. | 2x2 | 32 | 37 | 64 |
| TL07-631 | RSIC-1® | 20 Ga., 3 5/8" wide spaced 24" O.C. | 2x2 | 30 | 38 | 64 |
| TL07-635 | RSIC-V® | 20 Ga., 3 5/8" wide spaced 24" O.C. | 2x2 | 28 | 36 | 60 |
| TL09-600 | 2x GenieClip RST | 20 Ga., 3 5/8" wide spaced 24" O.C. | 1x1 | 22 | 28 | 59 |
| TL09-601 | 2x GenieClip RST | 20 Ga., 3 5/8" wide spaced 24" O.C. | 2x1 | 28 | 36 | 63 |
| TL09-602 | 2x GenieClip RST | 20 Ga., 3 5/8" wide spaced 24" O.C. | 2x2 | 35 | 42 | 66 |

* RC Deluxe is a brand of resilient bar

** RSIC-V and RSIC-1 are both brands of isolation clips

TEST RESULTS

| WOOD STUD WALL ASSEMBLIES | | | | | | |
|---------------------------|-----------------------|---|--------------------------|----------------|-----------------|-----------------|
| TEST REPORT NUMBER | PRODUCT | WOOD STUD WALL STRUCTURE | GWB LAYERS (5/8" Type X) | TL @80 Hz (dB) | TL @100 Hz (dB) | STC (ASTM E413) |
| TL07-674 | None | 2 x 4 spaced 16" O.C. | 1x1 | 23 | 23 | 37 |
| TL07-673 | GenieClip® RST | 2 x 4 spaced 16" O.C. | 1x1 | 20 | 27 | 57 |
| TL07-754 | RC Deluxe® | 2 x 4 spaced 16" O.C. | 1x1 | 15 | 20 | 50 |
| TL07-753 | RSIC-1® | 2 x 4 spaced 16" O.C. | 1x1 | 17 | 25 | 56 |
| TL07-746 | RSIC-V® | 2 x 4 spaced 16" O.C. | 1x1 | 14 | 22 | 52 |
| TL07-672 | GenieClip RST | 2 x 4 spaced 16" O.C. | 2x1 | 27 | 33 | 61 |
| TL07-740 | None | 2 x 4 spaced 16" O.C. | 2x1 | 25 | 25 | 39 |
| TL07-744 | RC Deluxe® | 2 x 4 spaced 16" O.C. | 2x1 | 19 | 25 | 55 |
| TL07-752 | RSIC-1® | 2 x 4 spaced 16" O.C. | 2x1 | 25 | 30 | 61 |
| TL07-747 | RSIC-V® | 2 x 4 spaced 16" O.C. | 2x1 | 22 | 28 | 58 |
| TL07-670 | GenieClip RST | 2 x 4 spaced 16" O.C. | 2x2 | 31 | 39 | 64 |
| TL07-741 | None | 2 x 4 spaced 16" O.C. | 2x2 | 27 | 28 | 41 |
| TL07-743 | RC Deluxe® | 2 x 4 spaced 16" O.C. | 2x2 | 25 | 30 | 60 |
| TL07-751 | RSIC-1® | 2 x 4 spaced 16" O.C. | 2x2 | 30 | 35 | 65 |
| TL07-748 | RSIC-V® | 2 x 4 spaced 16" O.C. | 2x2 | 28 | 33 | 63 |
| TL07-644 | GenieClip RST | 2 x 4 spaced 16" O.C. | 1x1 +1 layer | 16 | 18 | 48 |
| TL07-697 | GenieClip RST | 2 x 4 spaced 16" O.C. | 2x1 +1 layer | 17 | 24 | 54 |
| TL11-120 | None | Double Stud 2 x 4 spaced 16" O.C., 1" air gap | 1x1 | 32 | 35 | 61 |
| TL11-121 | None | Staggered Stud 2 x 4 spaced 8" O.C. | 2x2 | 29 | 36 | 47 |

* RC Deluxe is a brand of resilient bar

** RSIC-V and RSIC-1 are both brands of isolation clips

CONTACT Us

For Your Project Specific Questions

T. 416.449.0049 | E. info@pliteq.com

© Pliteq Inc. 2017.

06.17 The information provided is accurate to the best of our knowledge at the time of issue. However, we reserve the right to make changes when necessary without further notification. Suggested application may need to be modified to conform with local building codes and conditions. We cannot accept responsibility for products that are not used, or installed, to our specifications. All listed dimensions are nominal.



www.pliteq.com

For more information, please contact Marino\WARE® Technical Services at 866-545-1545. This technical information reflects the most current information available and supersedes any and all previous publications effective February 21, 2018 | CAT_GC_REV_1_02212018 | © WARE Industries, Inc. 2018