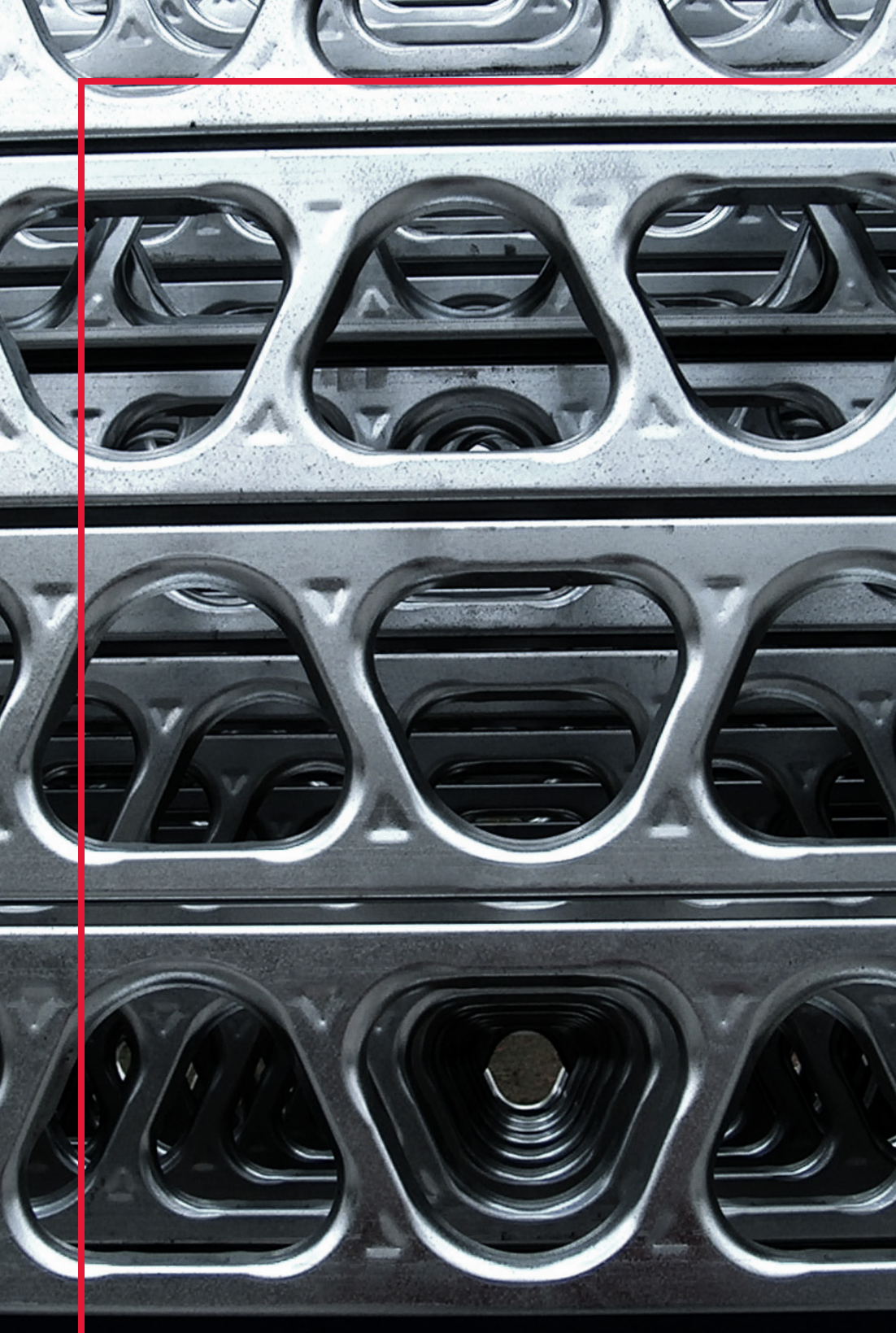


QUALITY | SERVICE | INNOVATION



## SPECIALTY SOLUTIONS FOR PANELIZERS

**MARINO** ★ **WARE**®



Cold-Formed Steel Framing Solutions for Panelizers

As a recognized leader in quality, service, and selection, Marino\WARE® offers a full line of structural and non-structural framing, as well as shaftwall/area separation products, plastering steel, and drywall finishing products. We are also proud to offer a collection of innovative framing products designed for speeding construction time and extending the life cycle of a building. Our products provide panelizers with reliable, durable, and efficient solutions for constructing panels, ensuring structural stability, safety, and long-term performance.

The Marino\WARE Difference

Made-to-Specification

We follow strict quality control measures, allowing us to manufacture products within tolerances specified for your desired conditions.

Engineering and Technical Services and Support

The MarinoWARE® DesignGroup™ offers a full range of technical support and engineering services, including professionally engineered stamped shop drawings, design and installation assistance on all Marino\WARE manufactured products, and expert advice on structural, nonstructural, fire and acoustic assemblies.

Specialty Products

We offer specialty products that will provide flexibility within your design, including products that provide a lighter load, are trade-friendly and offer additional dependability with load bearing panels for shear walls and structural floor sheathing.

If you have questions or need more information on any of the products listed in this catalog, contact our Technical Services department at [technicalservices@marinoware.com](mailto:technicalservices@marinoware.com), or at 866.545.1545. In most cases Technical Services representatives can provide an immediate response.

Warranty & Limitations

All products presented herein are warranted to the buyer to be free from defects in material and workmanship. The foregoing warranty is non-assignable and in lieu of and excludes all other warranties not expressly set forth herein, whether express or implied by operation of law or otherwise, including but not limited to any implied warranties of merchantability or fitness for a particular purpose. All details and specifications presented herein are intended as a general guide for the use of Marino\WARE® framing systems. These products should not be used without evaluation by a qualified engineer or architect to determine their suitability for a specific use.

Marino\WARE® assumes no responsibility for failure resulting from use of its details or specifications, or for failure resulting from improper application or installation of these products.

Governing Law

All issues arising in connection with your order and all transactions associated with it shall be interpreted according to the laws of the State of New Jersey, and all actions or other proceedings arising out of such issues shall be brought only in Superior Court, State of New Jersey, County of Essex, or United States District Court for the District of New Jersey. No action may be brought more than one year after accrual of the cause of action therefore.

Table of Contents

StudRite® ..... 4

JoistRite® ..... 6

Sure-Board® 200S - Floor ..... 8

Sure-Board® 200 - Wall ..... 9

ClipSource® ..... 10







## StudRite®

The StudRite® cold-formed steel framing system has one of the best strength-to-mass ratios of any stud in the industry. Designed for structural and non-structural application, the lip reinforced continuous triangular shaped knockouts provide increased structural performance and greater efficiency for mechanical, electrical and plumbing trades.



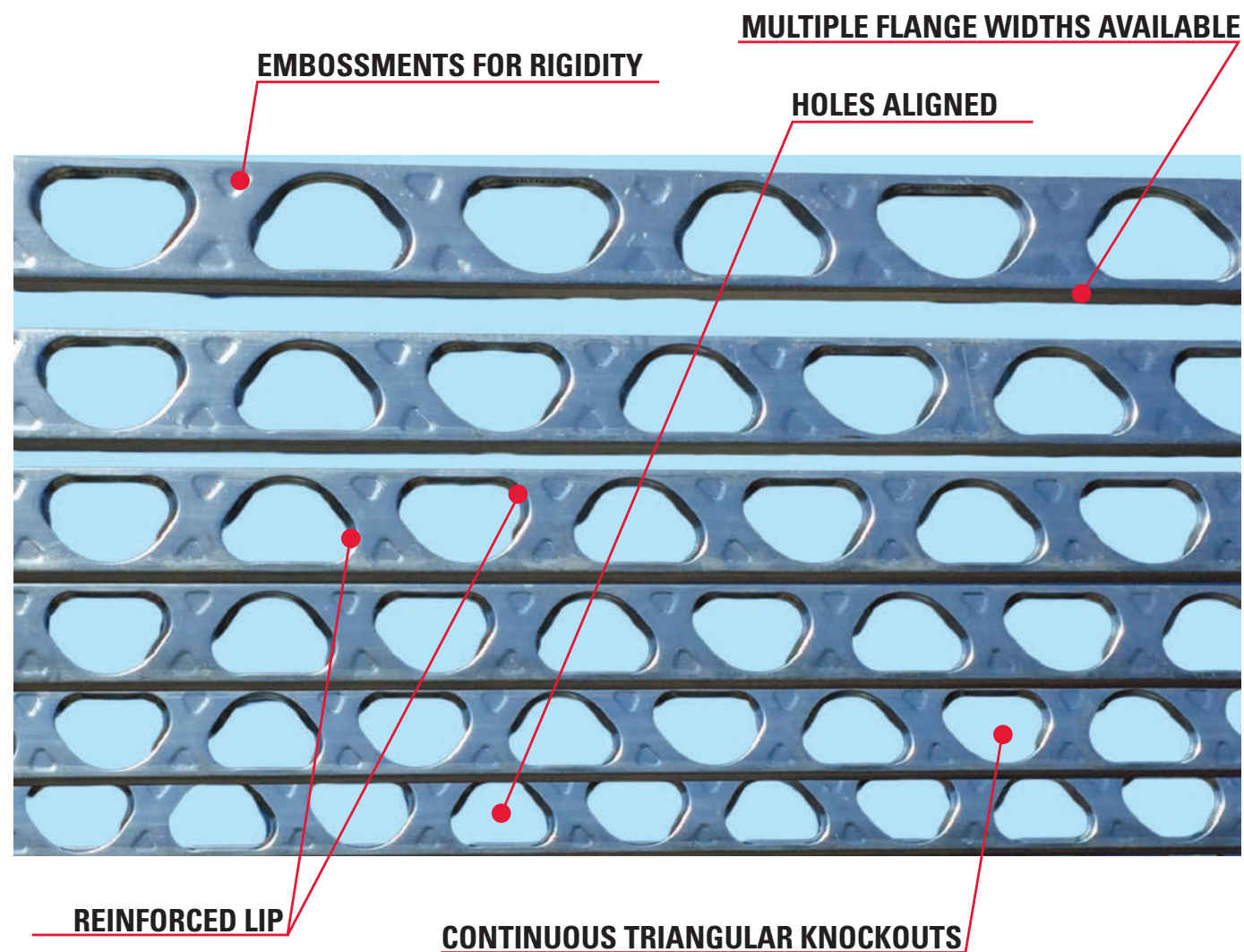
- ◆ Knockouts can be configured to meet job conditions
- ◆ Weighs less than traditional studs, which makes for ease of installation
- ◆ Increased acoustical values upwards of 61 STC
- ◆ The open web design reduces conductivity, thereby enhancing thermal efficiency. When a 6" 16 gauge StudRite is compared to a 6" conventional stud, StudRite has 15% less heat flow.
- ◆ Extensive fire tests have been performed at UL laboratories with the StudRite wall system classified in 1, 2, 3 & 4 hour non-load bearing assemblies, and it is listed in UL V457 for 1, 2 & 3 hour bearing wall, and exterior wall assemblies
- ◆ IAPMO ES evaluated code compliant



## JoistRite®

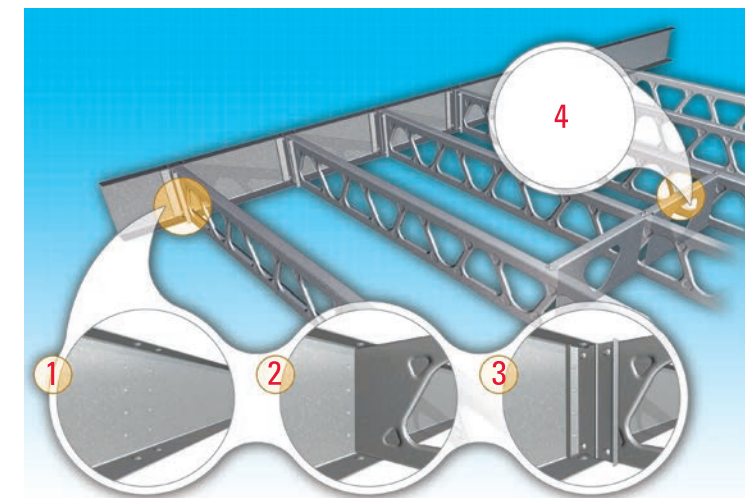
Marino\WARE® brings solutions to market for the steel framing industry. JoistRite is a specially designed, patented, cold-formed steel joist section that has one of the highest strength-to-mass ratios of any structural material in the market today. The lip reinforced continuous triangular shaped knockouts of this precision floor joist increase efficiency for mechanical, electrical and plumbing trades, with no need to cut or drill holes for conduits, plumbing, and heating ducts. Knockouts can be configured to meet job conditions.

- ✦ Weighs less than traditional joists, which makes for ease of installation
- ✦ Sound tested floor/ceiling assemblies with excellent STC and IIC ratings
- ✦ UL rated assemblies
- ✦ ICC ES evaluated code compliant
- ✦ Easy to handle, reduced installation time



### 1.Track [16 ga. (54) mil standard]

- Preset spacing for joists – built in “dimples,” located at conventional intervals along the track, surround the joist for easy initial placement.
- Pre-drilled holes – act as guides that assist in lining up components while eliminating the need to fasten screws through both joist and track.



### 2.Track and Joist

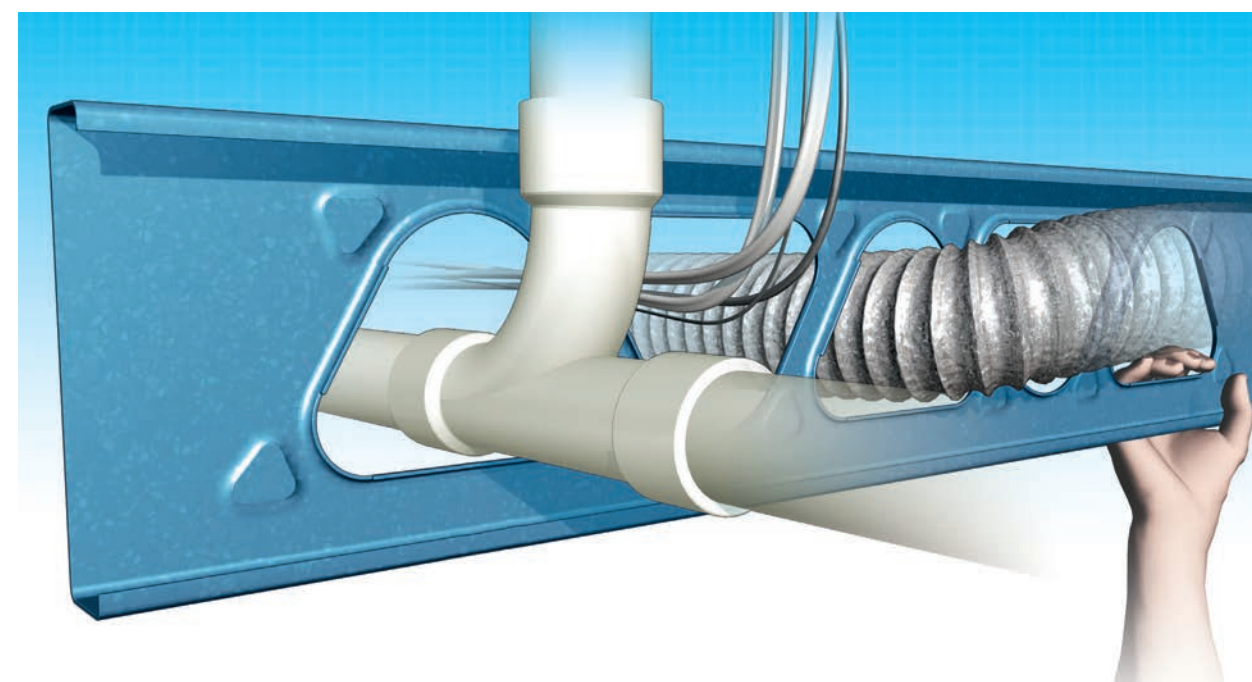
- Exclusive Snap-Lock technology – allows joists to lock into place with little effort and with less labor.

### 3.Web Stiffeners

- JoistRite Web Stiffeners are the very first to come with pre-drilled holes and precut to fit standard joist sizes, allowing for easier installation.

### 4.Blocking

- Unlike traditional blocking, JoistRite Blocking comes equipped with unique tabs that eliminate the need for additional accessory clips and fasteners – and additional clamping or fastening. The product is also precut to fit between the joists, resulting in more stability based on less labor.

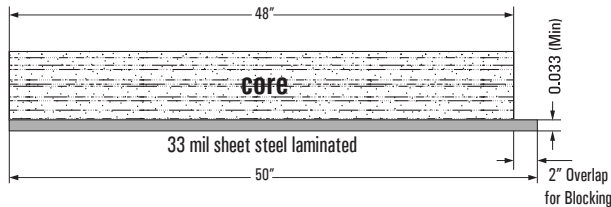






SURE-BOARD® 200S - Floor

Sure-Board 200S is a floor sheathing product designed for an ever-evolving construction industry. This product meets the demand for stronger and more dependable floor sheathing, making it an indispensable product for architects, engineers, and contractors across the nation. UL-rated for up to 3 hours and code-compliant per our third-party evaluation report, Sure-Board 200S both satisfies current building codes and continues adapting to match the needs of tomorrow, today.



- ◆ No fire-blocking required
- ◆ UL-rated from 1 – 3 hours
- ◆ 4' x 4' lighter weight panels for increased labor savings
- ◆ Integrated horizontal blocking
- ◆ 12 sound-tested assemblies
- ◆ 2,000 lb. concentrated load



SURE-BOARD® 200 - Wall

Sure-Board 200 is a patented panel that uses steel sheet laminated to a substrate. It was designed to replace traditional methods for shear walls. It can also be used for blast resistance.



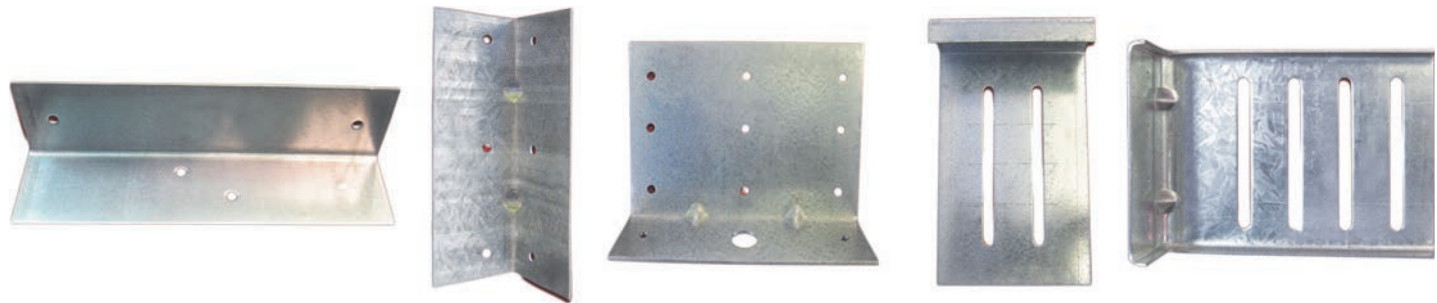
- ◆ Steel tab reduces horizontal blocking requirements
- ◆ Extensively tested for blast, ballistic and seismic applications
- ◆ Improves quality and helps eliminate problems for all shear, blast and ballistic walls.
- ◆ IAMPO Code Compliant
- ◆ Increased acoustical values upwards to 54 STC
- ◆ 1-Hour & 2-Hour Fire Rated Assembly



ClipSource®

ClipSource, from Marino\WARE, is a comprehensive line of connectors for cold-formed steel framing, featuring over 300 varieties of high-quality connectors to cover every requirement on the job. Each product in the line is thoughtfully designed to facilitate quicker, more cost-effective installation, while assuring proper attachment. In addition, ClipSource products strictly adhere to industry standards and are backed by testing to ensure reliability.

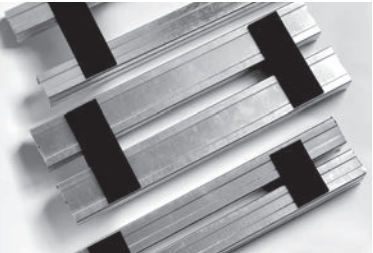
- ◆ Significantly reduce time, labor, materials and cost
- ◆ Facilitates quicker, more cost-effective installation
- ◆ Tested
- ◆ ICC ES evaluated code compliant
- ◆ Deflection, rigid, seismic, bridging and bracing, breakaway and utility clip applications



Visit MarinoWARE.com to experience our full line of innovative solutions.



**SOUND GUARD**  
THE SILENT STEEL FRAMING SYSTEM



- Reduces labor and materials
- Increases available floor space
- Does not require additional bracing or resilient channel



**Firestopping**  
Fire Bead • Fire Gasket • HotRod XL



- Firestopping and sound control for building joints
- Innovative firestop devices for faster installation
- Prevents passage of fire, smoke and toxic fumes



**StudRite**



**JoistRite**



- High strength-to-mass ratio
- Increased structural performance due to lip reinforced triangular cutouts and embossments
- Efficient design for installing plumbing, heating, electrical, and other trades
- Saves construction professionals valuable time and reduces labor costs



**SB**



- Unsurpassed resistance against loads imposed by seismic activity, hurricane force winds, fire, mold, impact and blast, while actively reducing sound transmission



**RC-MAX**



- RC-MAX is manufactured from 0.0190" 50 KSI steel for additional strength
- Offers economical means for controlling sound transmission



**ClipSource**



- A comprehensive line of connectors for cold formed steel framing
- Designed to facilitate quicker, more cost-effective installation, while making proper attachment of cold formed steel members easier



**QuickFrame**  
Rough Opening System



- Eliminates the need for multiple piece headers, jambs, and sills, reducing jobsite labor assembly time by more than 50%



## YOUR SUCCESS DEPENDS ON QUALITY BUILDING PRODUCTS AND SO DOES OURS.

For over 30 years, Marino\WARE®, a division of Ware Industries Inc., has served our customers with top quality cold-formed steel framing products, while delivering better solutions to design and construction challenges. We are committed to providing a superior customer experience through a vast selection of readily available products, a knowledgeable sales team, comprehensive technical support and services, prompt delivery through our fleet of trucks, and an extensive distribution network.

Our best-in-class product development team delivers innovative solutions to installation and cost challenges with products designed to save time, labor, and materials. In addition, we utilize the latest in roll forming techniques, maintain the latest level of technology available to the steel framing industry, and strictly adhere to all ASTM specifications.

Marino\WARE is 100% American-owned and operated. We take pride in creating local jobs, supporting local communities, and manufacturing products that reflect the uncompromising skill and ethics of our professional team. We operate state-of-the-art production facilities in New Jersey, Georgia, and Indiana, as well as a sales office in New York.

Visit [MarinoWARE.com](http://MarinoWARE.com) to experience our full line of innovative solutions.

*ClipSource*

*ISI StudRite®*



*JoistRite®*

MarinoWARE® operates state-of-the-art production facilities in New Jersey, Georgia, and Indiana, as well as a sales office in New York.

### **New Jersey Facility**

400 Metuchen Road  
South Plainfield, NJ 07080  
800.627.4661  
908.757.9000  
Fax: 908.412.1442

### **Georgia Facility**

777 Greenbelt Parkway  
Griffin, GA 30223  
800.504.8199  
678.688.1312  
Fax: 678.688.1379

### **Indiana Facility**

4245 Railroad Avenue  
East Chicago, IN 46312  
866.636.6002  
219.378.7100  
Fax: 219.378.7106

### **New York Sales Office**

51 John St. Ste. 1  
Babylon, NY 11702  
800.627.4667  
631.691.2200  
Fax: 631.691.1492

### **MarinoWARE® DesignGroup™**

100 Hendrick Drive, Suite 200  
McDonough, GA 30253  
866.545.1545  
678.688.7780  
Fax: 770.507.2605