



Innovative Solutions for Cold-Formed Steel Framing, Fire, & Sound

MARINO WARE®



RETHINK STEEL FRAMING

SOLUTIONS THAT SAVE TIME AND LABOR

SPECIALISTS IN COLD-FORMED STEEL FRAMING, FIRE SOLUTIONS, AND SOUND SOLUTIONS



Our Company

For over 30 years, MarinoWARE® has served our customers with top quality cold-formed steel framing products that deliver solutions to construction challenges.

- A vast selection of readily available products
- Innovative solutions that reduce construction costs
- Products designed to increase jobsite safety
- A knowledgeable sales team
- Comprehensive technical support and services
- An extensive distribution network
- Prompt delivery

Our Products and Services

Along with a full line of structural and non-structural framing, shaftwall/area separation products, slotted track, lath, beads & trims, Marino\WARE offers a collection of innovative framing products designed to streamline the construction process and reduce costs by saving time, labor, and materials. This collection includes well-known brands we proudly present in this brochure:

- ViperStud® Drywall Framing System
- SoundGuard® Silent Framing System
- StudRite® and JoistRite® Open-Web Studs and Joists
- Marino\WARE® Joint Firestopping
- Sure-Board® Shear Wall
- QuickFrame® Rough Opening System
- ClipSource® Clips and Connectors



Our Commitment

As a 100% American-owned and operated company, Marino\WARE takes pride in creating local jobs, supporting surrounding communities, and manufacturing products that reflect the uncompromising skill and ethics of our professional team. We operate state-of-the-art production facilities in New Jersey, Georgia, and Indiana.

Time + Labor Saving Solutions

Efficiency Redefined

In construction, time is money. That's why Marino\WARE designs innovative products that streamline installation times and accelerate your project schedule, saving you valuable time and labor. Our comprehensive line of time and labor saving solutions directly translates to reduced overall project costs, maximizing your return on investment. Inside this guide, you'll discover a range of products that directly translate to lower project costs and a stronger return on your investment.

Sound Solutions

Minimize Sound Transfer and Maximize Space*

Sound transmission class (STC) is a rating for how well an assembly performs in mitigating sound over a range of frequencies. Marino\WARE offers:

- High-performance products designed to minimize sound transmission in wall assemblies, achieving high STC ratings
- *The SoundGuard® Silent Framing System is designed to easily construct narrower, more economical interior non-load bearing partitions with high STC ratings. (see p.8)

Fire Solutions

Achieve Fast, Reliable Head-of-Wall Fire Protection

Marino\WARE Firestopping products are designed to maximize your efficiency and minimize your hassle on the jobsite.

- Prevents the passage of fire, smoke, and toxic fumes through building joints
- Meets UL-2079 5th edition fire testing
- No cure time, minimal clean-up, and immediate inspection
- Offer unlimited shelf-life and no hardening of the material over time for composite vinyl intumescent accessory products

DesignGroup™ p.06

SOUND|GUARD™
THE SILENT STEEL FRAMING SYSTEM p.08

StudRite® p.10

JoistRite® p.12

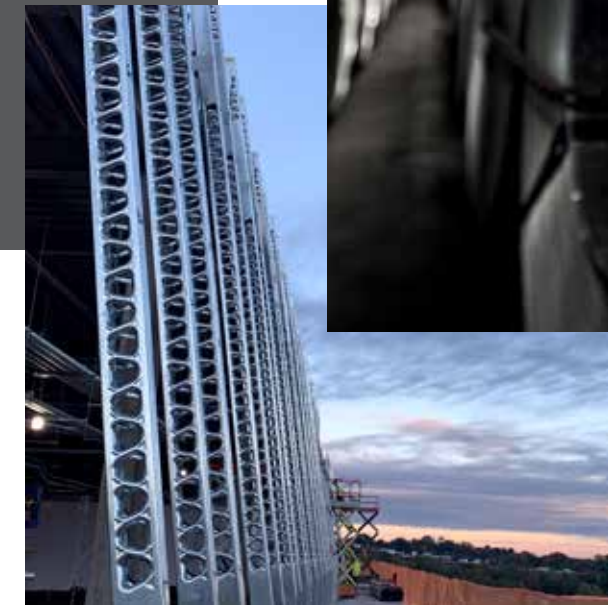
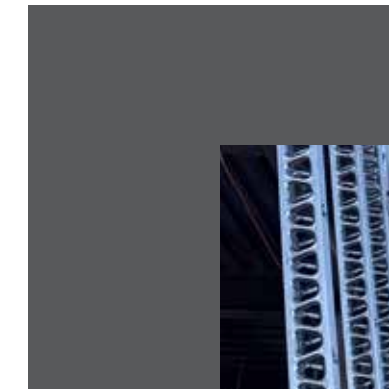
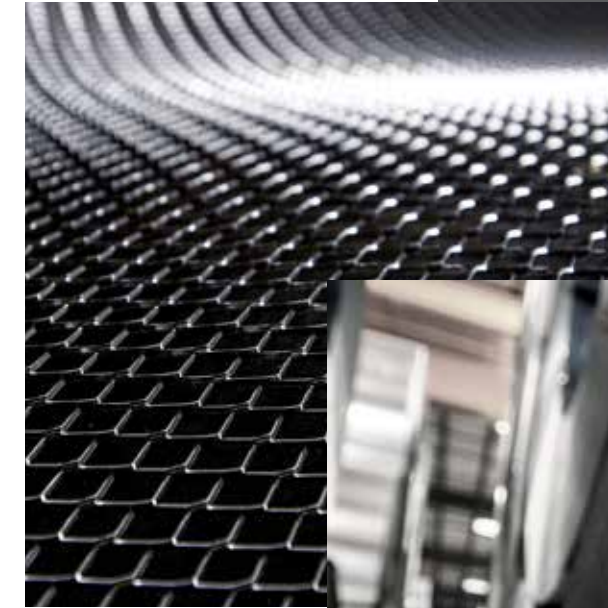
MARINO\WARE™
Firestopping
The Best • Fire Cabinet • HD1000 XL p.14

p.20 **SURE-BOARD®**
For Shear

p.22 **QuickFrame®**
Rough Opening System

p.24 **ClipSource**

p.26 **SUSTAINABILITY**





MARINO WARE[®]
DesignGroup[™]

Get the Design Advantage

At MarinoWARE[®], excellence extends beyond our products. The MarinoWARE[®] DesignGroup[™] delivers comprehensive technical support and engineering services, including:

- Professionally engineered stamped shop drawings
- Design and installation guidance for all MarinoWARE products
- Expert advice in structural, non-structural, fire-rated, and acoustic assemblies

With experience in a wide array of projects, from multi-story load bearing commercial structures to single-family residences, we are confident that our knowledgeable team and dedication to quality and customer service will provide an experience different from any other supplier.



① C LOAD BEARING & NON-LOAD BEARING 3 5/8\"/>

*CS18\"/>

BRACING



JOIST -16

JOIST SEE PLAN NOTES FOR SIZE, GAUGE, & SPACING.

*Example Drawings

BIM Solutions

MarinoWARE DesignGroup[™] provides BIM modeling and coordination solutions for Cold-Formed Steel framing.

Our services include 3D modeling of walls, floors, roofs, and ceilings for different Levels of Development (LOD) based on your project's specific needs. Using AutoDesk Revit[®], our team will provide solutions for your project including BIM-coordinated models for trade clash detection and collaboration.

Contact Us

Call: 866.545.1545
 Email: Engineering@MarinoWARE.com
 For shop drawings, upload plans via our website at:
www.MarinoWARE.com/Engineering

SOUND GUARD®

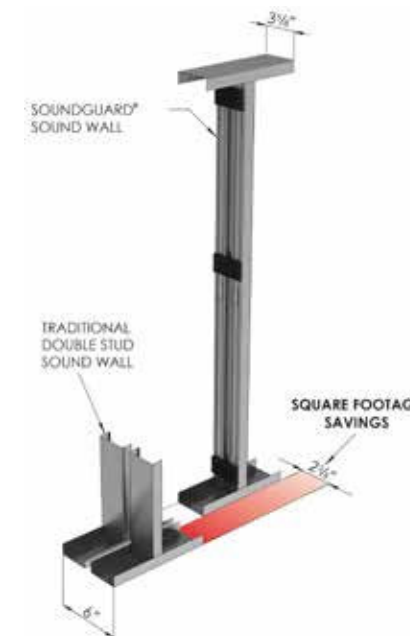
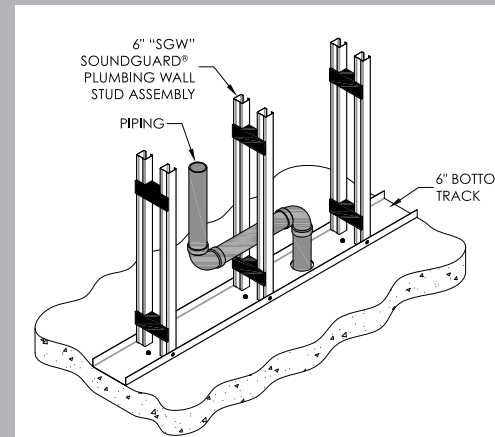
THE SILENT STEEL FRAMING SYSTEM

The MarinoWARE SoundGuard® Silent Steel Framing System is a patented interior non-load bearing framing system specifically designed to easily construct partition walls with high sound transmission class (STC) ratings.

Invented and designed by a contractor, SoundGuard's innovative design simplifies installation, reducing labor costs without compromising on sound performance.

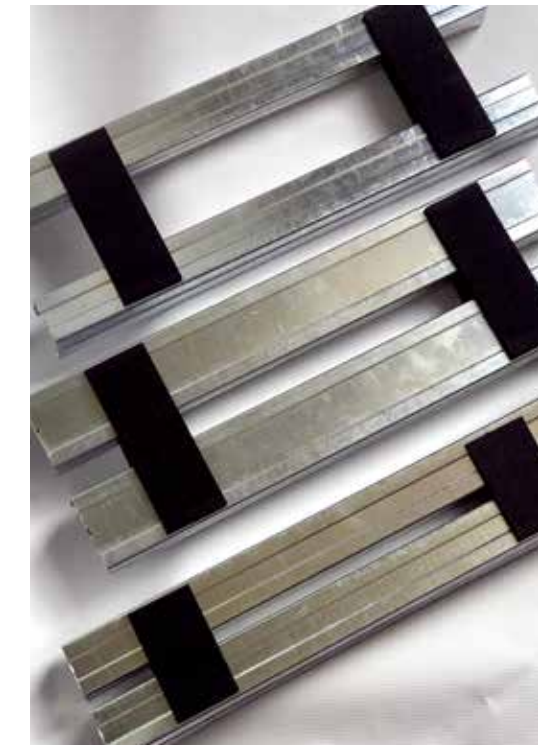
Whether you need complete partitions or partial walls, SoundGuard drywall studs offer a versatile solution for various applications - from condos and hospitals to conference rooms, hotels, and beyond.

Maximize Space.
Minimize Sound Transfer.



- Increases rentable/saleable floor space
- High STC ratings
- Does not require additional bracing
- Does not require resilient channel
- 1 hr and 2 hr fire rating
- Less labor
- Faster buildout
- Narrower walls
- Plumbing wall option

Learn more at: www.MarinoWARE.com/SoundGuard

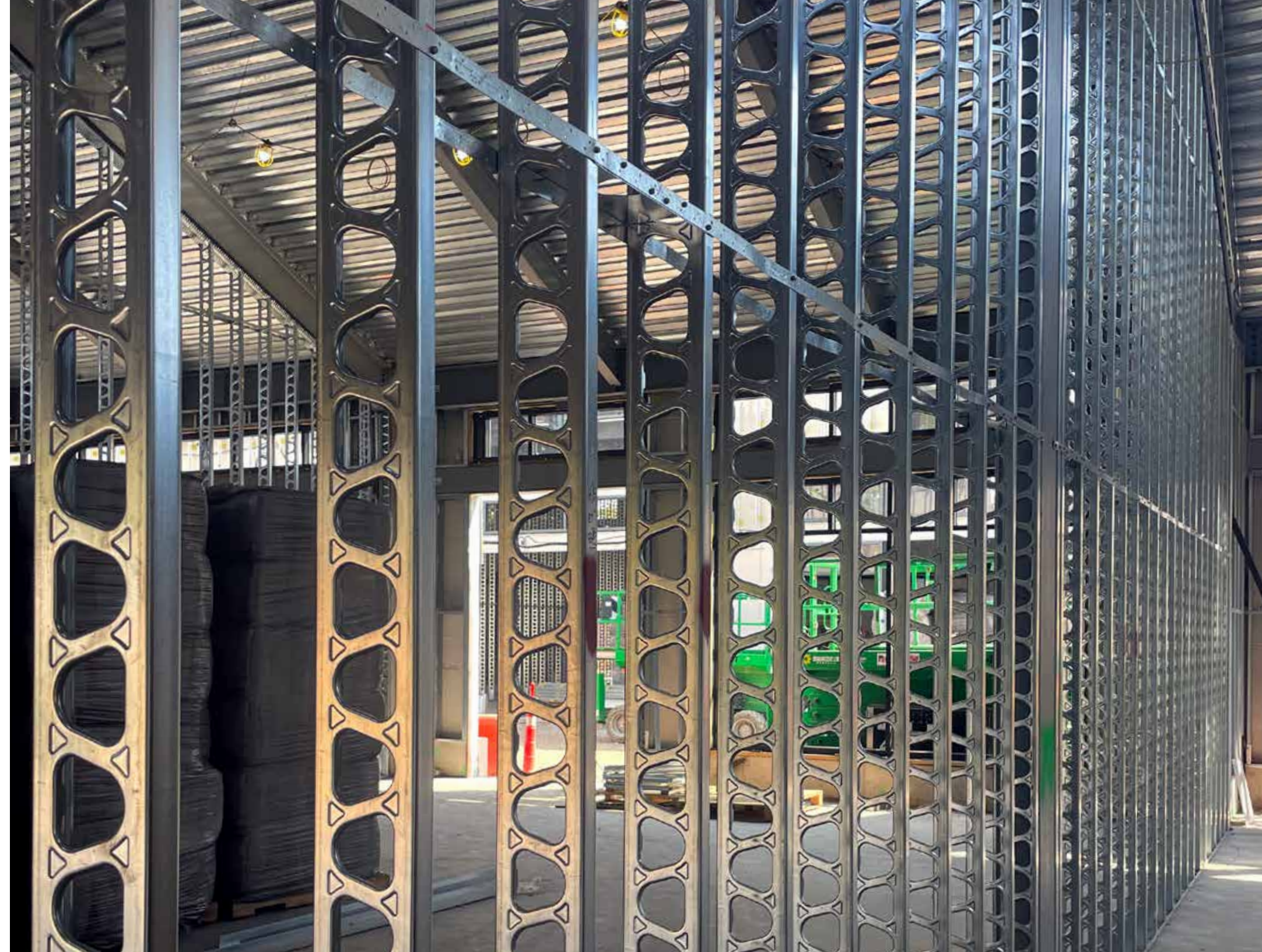




StudRite® open web studs by MarinoWARE® deliver one of the best strength-to-mass ratios in the industry, making them a top choice for structural and non-structural applications. Lighter and easier to handle than traditional studs, StudRite enhances jobsite safety while boosting productivity.

StudRite's lip-reinforced, continuous triangular knockouts streamline mechanical, electrical, and plumbing installations, reducing labor and callbacks. With superior acoustic ratings, fire-rated performance, and reduced thermal transfer, StudRite is ideal for hospitals, assisted living facilities, apartments, and more.

Perfect for data centers, tall walls, and panelization, it sets the standard for efficient, high-performance framing.



- Less weight
- Lower installation time
- Increased design flexibility
- Contributes to fewer callbacks
- Fire-rated
- Sound-tested
- Ideal for panelizers
- Excellent for tall walls and data centers
- Easy to handle, increasing safety
- Increases efficiency for MEP trades

Learn more at: www.MarinoWARE.com/StudRite





JoistRite® open web joists are specially designed cold-formed steel joist sections that deliver an exceptional strength-to-mass ratio. They are significantly lighter and easier to handle than traditional joists, providing increased jobsite productivity and enhanced safety with their user-friendly design. Large triangular knockouts eliminate the need for on-site cutting or drilling for wiring, conduits, plumbing, and HVAC systems, simplifying the installation. Beyond efficiency, JoistRite® also provides superior acoustic performance and fire resistance, ensuring a comprehensive solution for modern construction.

Increase Efficiency, Performance, and Safety



- Less weight
- Easy to handle, increasing safety
- Manufactured to length
- Increases efficiency for MEP trades
- Contributes to fewer callbacks
- Fire-rated
- Sound-tested

Learn more at: www.MarinoWARE.com/JoistRite





MarinoWARE's comprehensive range of joint firestopping and smoke and sound products streamline your workflow, saving contractors time, labor, and money. These value-added solutions deliver direct cost savings for each project.

Learn more at: www.MarinoWARE.com/Firestopping



HOTROD® XL is a surface-mounted fire-rated deflection bead tested to UL 2079. It provides 1 hr and 2 hr firestop solutions in joints for both standard wall and shaft wall types between flat concrete or fluted metal deck applications.

HOTROD XL provides 1/2" nominal joint protection, utilizing firestopping technology to halt the passage of smoke, fire, and sound.

This solution combines a flat deflection bead with compressible foam and intumescent tape for a perfect seal along head-of-wall joints, providing a full 3/4" of building movement.

Additionally, it is sound tested according to ASTM E90, with test reports available. It is tested in assemblies up to a STC 68.



- Tear-off strip for clean finish
- Stays flexible for life of the assembly
- 3/4" joint protection
- Can be pre-installed on drywall
- No temperature or humidity restrictions
- Rust-proof and dent-resistant PVC to reduce damage
- Fire Spray is NOT required
- Can be installed to the front or back side of drywall
- Features a pink perforated attachment flange
- Tested according to ASTM E90
- ASTM E90, sound reports available



Fire Bead® is a surface-mounted deflection bead tested to UL 2079. It provides 1 hr and 2 hr firestop solutions in joints for both standard and shaft wall assemblies.

Fire Bead provides 1/2" nominal joint protection, utilizing firestopping technology to halt the passage of smoke, fire, and sound.

This solution combines a vinyl bubble gasket, a perforated mud leg, and intumescent strip to provide an aesthetically pleasing joint in exposed locations. It provides a single-step installation of both a code-compliant firestop and finished drywall accessory in a single component.

Additionally, it is sound-tested according to ASTM E90, with test reports available. STC ratings match or exceed the performance of acoustic sealant.



- Installs fully cured
- Stays flexible for life of the assembly
- Has two separate compressible sealing points
- Rust-proof and dent-resistant
- PVC to reduce damage
- Not affected by water/ moisture
- No temperature restrictions for installation
- L-rating less than 1 CFM/Lin Ft for ambient and 400°F
- Features a pink perforated mud leg
- Tested to ASTM



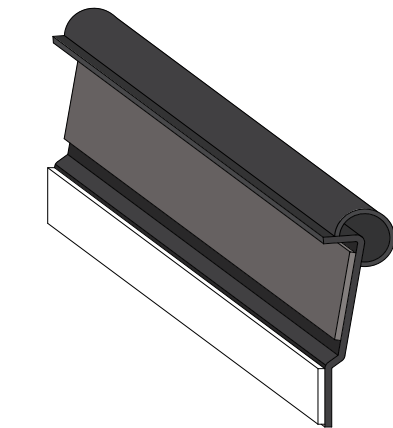
Learn more at: www.MarinoWARE.com/Firestopping



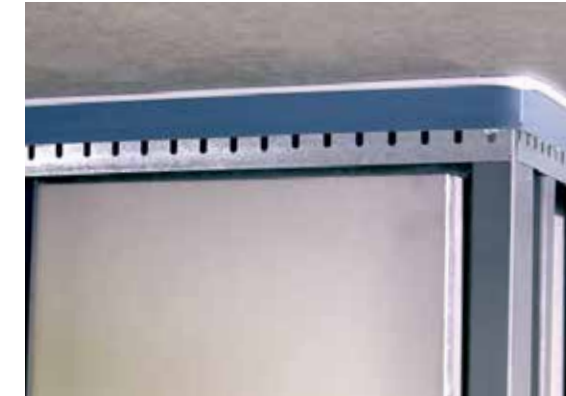
Fire Gasket® preformed firestop is composed of a vinyl frame with a bubble gasket and intumescent strip that is tested to UL 2079. It provides 1 hr and 2 hr firestop solutions in joints for both standard and shaft wall assemblies.

Fire Gasket is available in three sizes, with 1/2", 1", and 1-1/2" total movement.

Additionally, it is sound tested according to ASTM E90, with test reports available. It is tested in assemblies up to a STC 67.



- Available in 3 Sizes: 1/2", 1", and 1-1/2"
- Will not shrink or harden over time
- 1 hr and 2 hr fire-rated
- Premium STC ratings
- Can be pre-installed to the track
- Comes in 10 ft lengths
- Available in pink for use in concealed locations and black for exposed locations

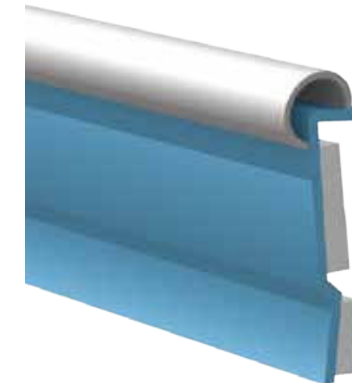


Sound Gasket® is a vinyl accessory that provides smoke and sound ratings for both dynamic and static joints.

The unique vinyl profile provides a seal along the inside leg to prevent sound flanking along the leg of the slotted track and framing screws while the outer bubble gasket will compress to seal against uneven concrete.

Sound Gasket provides up to 1-1/2" overall unencumbered movement.

Additionally, it is sound tested according to ASTM E90, with test reports available. It is tested in assemblies up to a STC 67.



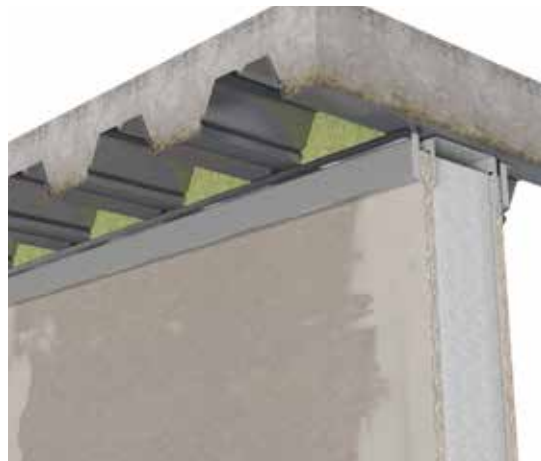
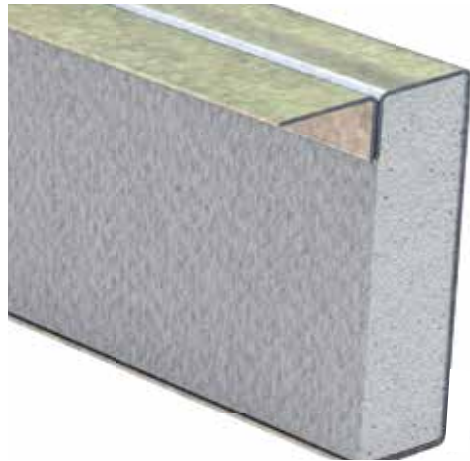
- Replaces acoustic sealant at joints
- Installs fully cured
- Not effected by temperature or humidity
- Allows for up to 1" unencumbered movement
- Used vertically and horizontally
- Provides premium STC ratings
- Installs on both sides of the wall
- Comes in 10' lengths
- Compliant with Section 713.6 of IBC and CBC





Learn more at: www.MarinoWARE.com/Firestopping

MarinoWARE® **FireRip™** is a composite steel angle encased in fire-rated drywall that provides unencumbered dynamic movement for high deflection dynamic joint applications, per UL-2079 5th edition. Available in multiple sizes, and provides 1 hr, 2 hr, and 3hr fire ratings from a single-layer profile.



- Tested with up to 100% compression and 100% extension
- Can be used as a retrofit to repair damaged fire-rated fill material or to replace fire-rated fill material that was improperly installed
- Mechanically fastened to the overhead structure at 24" on center through the horizontal attachment flange
- The encased drywall leg is set against the finished drywall concealing the deflection gap at the head-of-wall
- Install joining pieces in contact to each other
- The butt joint may be sealed with sealant or joint compound and flat tape if necessary
- Installs over the finish layer of drywall on both sides of a standard wall and on just one side (finish drywall/non-shaft side) of a shaft wall
- Can be used with any UL certified deep leg or slotted leg track
- L-rating less than 1 CFM

Product	Movement	Standard Wall	Shaft Wall	Fluted Deck	Concrete Deck	Installation	Paintable	Sound Test
HOTROD XL	1/2" Comp 1/4" Ext	✓	✓	✓	✓	Post Drywall	✓	✓
Fire Bead	1/4" Comp Only	✓	✓		✓	Post Drywall	✓	✓
Fire Gasket	FG .5: 1/2" Overall FG 1: 1" Overall FG 1.5: 1-1/2" Overall	✓	✓	✓	✓	Pre Drywall	✓	✓
FireRip	FR2: 2" Overall FR3: 3" Overall	✓	✓	✓	✓	Post Drywall	✓	



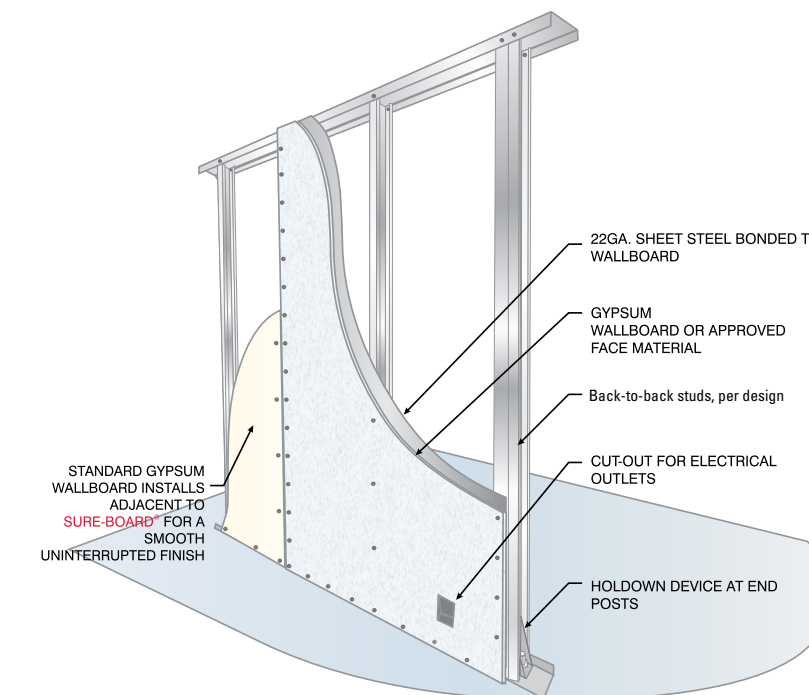
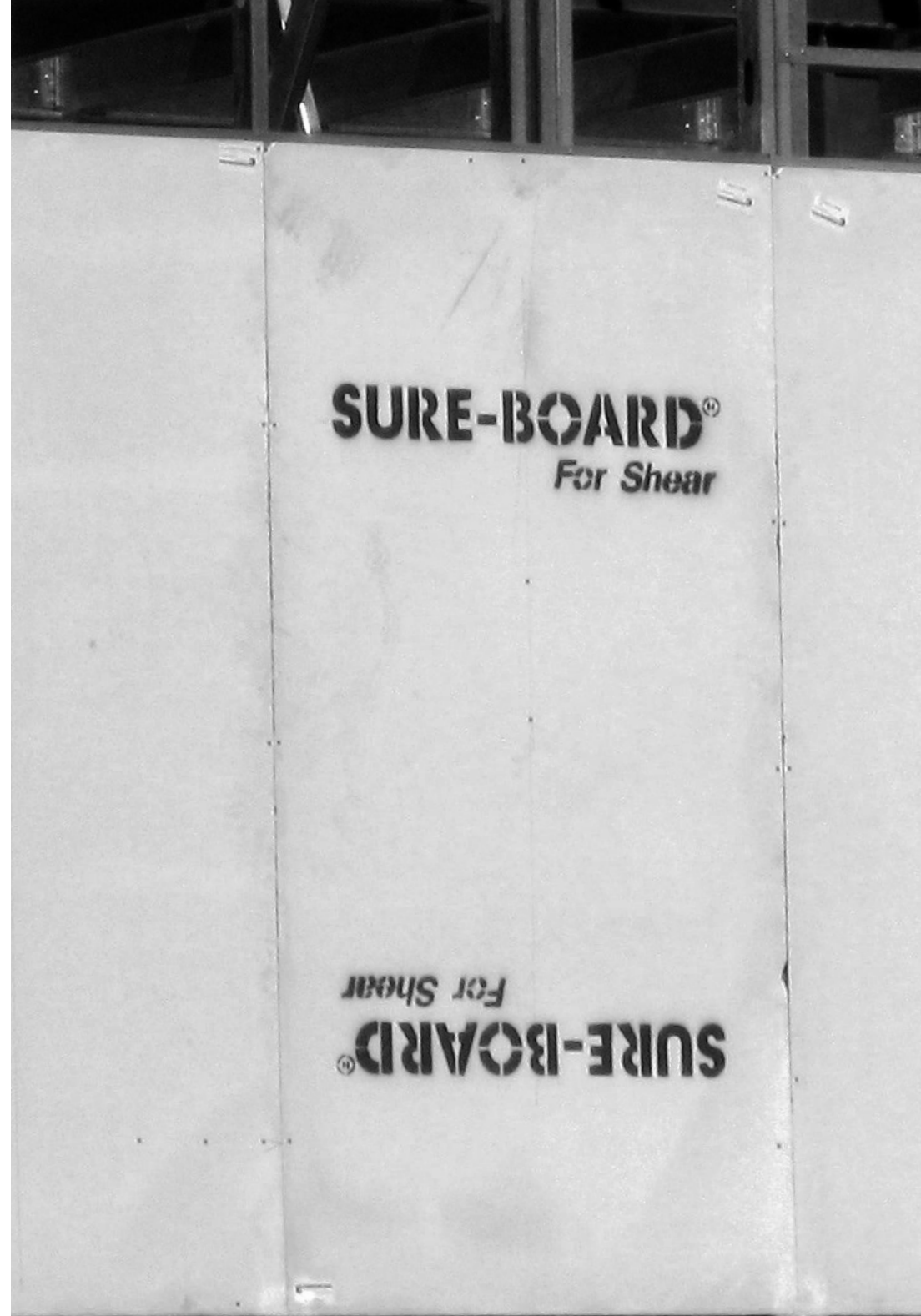


A steel sheet and gypsum composite shear wall panel that is installed on cold-formed steel framing. Sure-Board® Shear can replace traditional methods for shear walls, eliminate cross-bracing, brace frames, or plywood.

The patented Series 200 panels are manufactured with a single 22-gauge galvanized sheet of steel laminated to any manufactured version of gypsum panel. A water-based EVA adhesive is used to create an incredibly strong shear panel that is 1 hr and 2 hr fire-rated.

Nationally approved for earthquakes and hurricane-force winds, Sure-Board is a value-tested, innovative solution for controlling imposed loads.

Sure-Board has both shear values and sound ratings, providing a complete design solution. Note: Pneumatic pin attachment of Sure-Board has been tested.



- IAMPO code compliance
- DOD blast-tested
- Easy-to-install
- Fire-tested
- Sound-tested
- Great for seismic and wind areas
- Use traditional tools
- Multiple sheet sizes and substrates

Learn more at: www.MarinoWARE.com/Sure-Board



The QuickFrame® Rough Opening System streamlines installation by reducing the number of components required to frame windows and doors.

The system comes in extra-wide flanges and extra-long returns and can be used for exterior or interior framing around any non-load bearing opening. Simply attach the header and jamb with our easy-to-use QuickFrame Clip for quick installation.

A single QuickFrame member can replace built-up headers and jambs, reducing jobsite labor assembly time by up to 50%.



- Increased performance
- Less weight
- Fewer pieces
- Eliminates built-up jambs
- Eliminates built-up headers
- Up to 50% labor reduction
- Pre-drilled holes
- Pre-cut lengths
- One-piece clips

Learn more at: www.MarinoWARE.com/QuickFrame



ClipSource®

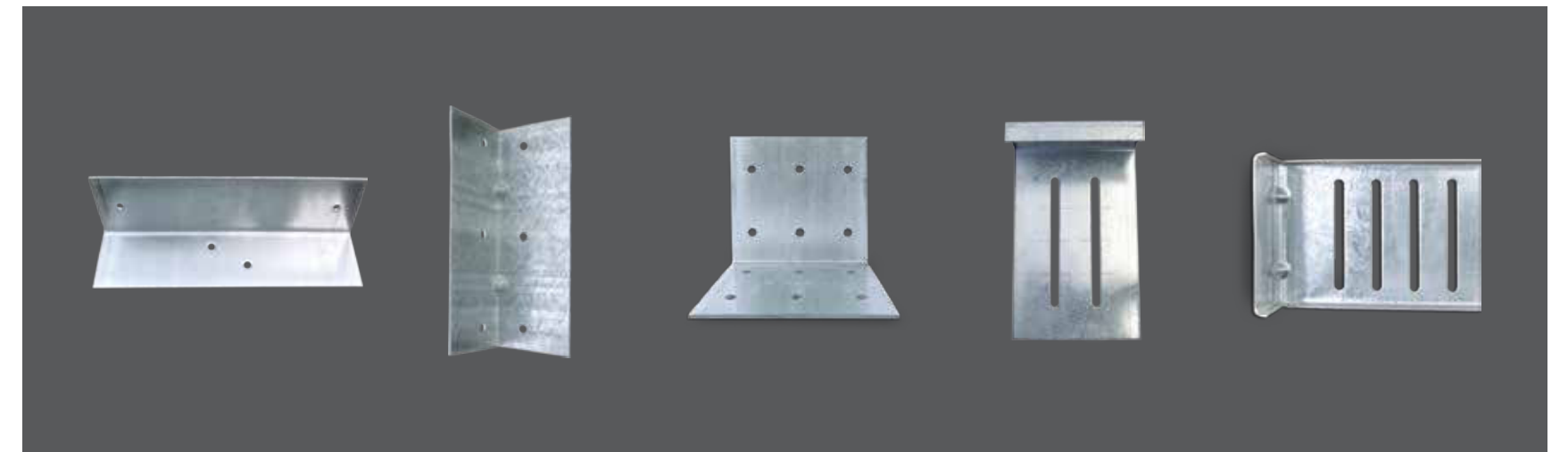
ClipSource® is a comprehensive line of steel framing connectors encompassing deflection connectors, rigid connectors, joist framing connectors, and bridging and bracing connectors that are thoughtfully designed to facilitate quicker, more cost-effective installation while assuring proper attachment.

In addition, ClipSource products strictly adhere to industry standards and are backed by testing to ensure reliability.



- Less cost
 - Faster installation
 - Code compliant
 - Order by 2 PM for same-day shipment
 - Use same PO for all orders
 - No freight charges*
 - No minimum order quantities*
- *Conditions apply*

Learn more at: www.MarinoWARE.com/ClipSource



STEEL SOLUTIONS FOR A SUSTAINABLE FUTURE

Sustainability isn't a fleeting trend; it's the foundation of responsible building. At Marino\WARE, we don't just react to the demand for eco-conscious solutions – we lead the way. We partner with architects, designers, and contractors, providing innovative products and solutions that empower them to build a greener future, together.



COLD-FORMED STEEL FRAMING SYSTEMS

Environmental Product Declaration (EPD)
and EPD Optimization Assessment

Marino\WARE offers a choice of Product Specific Type III EPDs. One EPD applies to all our cold-formed steel framing products, regardless of the steel production method – Basic Oxygen Furnace (BOF) or Electric Arc Furnace (EAF). The second EPD specifically details the environmental advantages of our products made with EAF steel, allowing you to make informed decisions based on embodied carbon.

Our third-party verified EPD Optimization Assessment takes our EPDs a step further by identifying specific areas where we can reduce our environmental impact even more.



**THIRD-PARTY
VERIFIED**
HEALTH PRODUCT DECLARATION

THIRD-PARTY VERIFIED

Health Product Declaration (HPD)

Marino\WARE is the first cold-formed steel framing manufacturer offering a third-party certified Health Product Declaration (HPD), demonstrating our commitment to material health and transparency. This provides architects and building owners with unbiased health hazard information for informed decisions and easier LEED certification.

Learn more at: www.MarinoWARE.com/Sustainability





MarinoWARE® operates state-of-the-art production facilities in New Jersey, Georgia, and Indiana, as well as a sales office in New York.

New Jersey Facility
400 Metuchen Road
South Plainfield, NJ 07080
800.627.4661
908.757.9000
Fax: 908.412.1442

Georgia Facility
777 Greenbelt Parkway
Griffin, GA 30223
800.504.8199
678.688.1312
Fax: 678.688.1379

Indiana Facility
4245 Railroad Avenue
East Chicago, IN 46312
866.636.6002
219.378.7100
Fax: 219.378.7106

New York Sales Office
51 John St. Ste. 1
Babylon, NY 11702
800.627.4667
631.691.2200
Fax: 631.691.1492

MarinoWARE® DesignGroup™
100 Hendrick Drive, Suite 200
McDonough, GA 30253
866.545.1545
678.688.7780
Fax: 770.507.2605