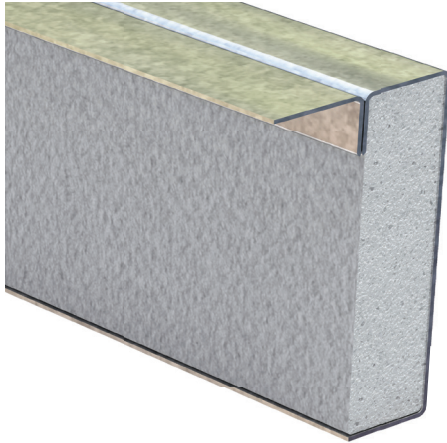




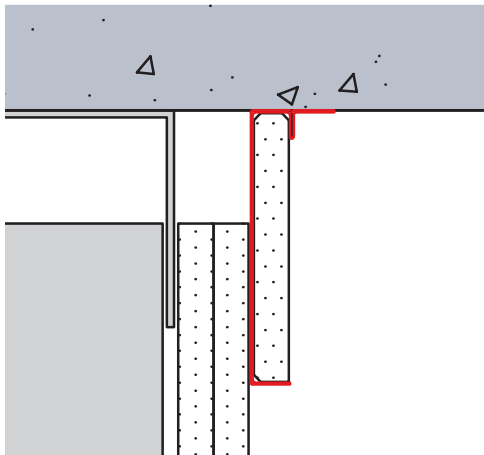
MarinoWARE® FireRip™ is a composite steel angle encased in fire-rated drywall that provides unencumbered dynamic movement for high deflection dynamic joint applications, per UL-2079 5th edition. Available in multiple sizes, and provides 1 hr, 2 hr, or 3hr fire ratings from a single-layer profile.



- ♥ Tested with up to 100% compression and 100% extension
- ♥ Mechanically fastened to the overhead structure at 24" on center through the horizontal attachment flange
- ♥ The encased drywall leg is set against the finished drywall concealing the deflection gap at the head-of-wall
- ♥ Provides 1 hr, 2 hr, or 3hr fire ratings from a single-layer profile
- ♥ Install joining pieces in contact to each other
- ♥ The butt joint may be sealed with sealant or joint compound and flat tape
- ♥ Can be used as a retrofit to repair damaged fire-rated fill material or to replace fire-rated fill material that was improperly installed
- ♥ Installs over the finish layer of drywall on both sides of a standard wall and on just one side (finish drywall/non-shaft side) of a shaft wall
- ♥ Provides L-rating of less than 1CFM
- ♥ Can be used with any UL certified deep leg or slotted leg track

Ordering / Packaging

Description	Part #	Size	Length	Pcs/Ctn
FireRip 2	FR2	1-1/2" x 2-3/4" x 8'	8'	4
FireRip 3	FR3	1-1/2" x 3-3/4" x 8'	8'	4
FireRip 4	FR4	1-1/2" x 4-3/4" x 8'	8'	4

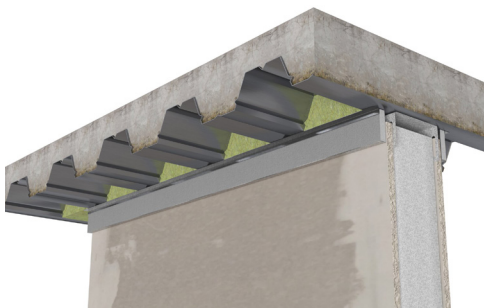


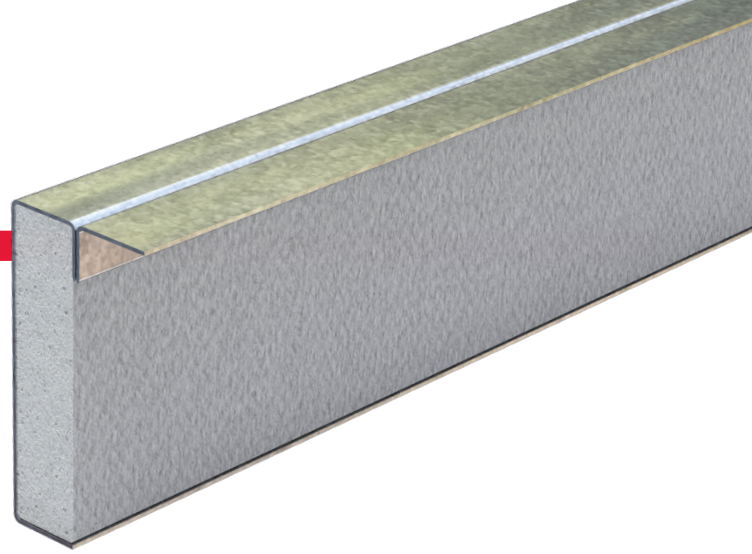
Storage / Warranty

- ♥ When stored indoors and kept dry in the original package, FireRip will provide unlimited shelf life
- ♥ See Firestop Product Warranty for details

ASTM & Code Standards

- ♥ ASTM E-84
- ♥ ASTM E-1966
- ♥ UL 2079 5th Edition
- ♥ L-Rating (air leakage) testing for compliance with International Building Code (IBC) and Canadian Building Code (CBC)
- ♥ UL listings/approvals include: HW-D-0420; HW-D-0421; HW-D-0451; HW-D-0453; HW-D-0461; HW-D-0463; HW-D-0584; HW-D-0585; HW-D-0587; HW-D-0594; HW-D-0602; HW-D-0622; HW-D-0652; HW-D-0653
- ♥ U.S. Patent No. 11,920,343 B2





FireRip®

MarinoWARE® FireRip® is fire-rated drywall encased in a steel angle that provides unencumbered dynamic movement for high deflection joint applications.

Before installing, refer to MarinoWARE product literature, 3rd party published listings and approvals. These installation instructions are supplemental to the 3rd party listings and for use as such.

Installation Guidelines:

Before Installing FireRip:

Construct gypsum, or concrete/concrete block wall assembly per the respective design. Maintain the nominal joint width between floor/ceiling and wall assembly per the relevant fire-resistive joint system for the size FireRip being installed.

Step 1:

Measure FireRip to length and “mark” cut line. Using a square, draw a line across both legs of FireRip

Step 2:

Using a diamond or abrasive metal cutting blade, cut to length.

Step 3:

Deburr cut edges with a metal file. (See additional details below for FireRip joints at outside and inside corners)

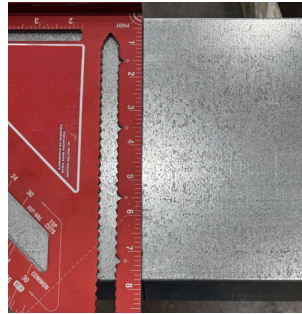
Step 4:

Position FireRip so that the gypsum encased leg is tight to the face of the wall assembly. Provide pressure to compress the mounting leg to form a 90 degree angle between the FireRip and face of the wall or adjoining floor/ceiling assembly (Step 4).

Step 5:

Use min. 1-1/4” steel fastener (concrete screw anchor, direct fastening, sheet metal screw) to attach FireRip to the underside of the adjoining floor/ceiling or roof assembly (Step 5). Min. 1” diameter steel washer recommended for use with direct fastening method. Fastener of choice to be installed per manufacturer’s recommended method to ensure fastener “standoff” is not overdriven or underdriven. Maintain fastener edge distance per the anchor manufacturer’s guidelines. Fastener and butt joint spacing to be as described in the applicable UL fire-resistive joint system.

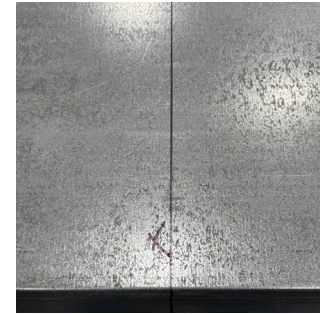
Step 1:



Step 2:



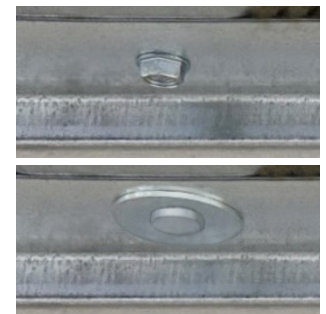
Step 4:



Step 3:



Step 5:



Notes:

- Follow all safety guidelines and protocol for handling/cutting metal and gypsum materials.
- Butt joints between segments tightly joined so that gaps do not occur. Seal joints per the applicable UL Listing using 1/4” bead of UL Listed firestop sealant or layer of tape and joint compound.

Outside Corners

Option #1: (Recommended)

Step 1:

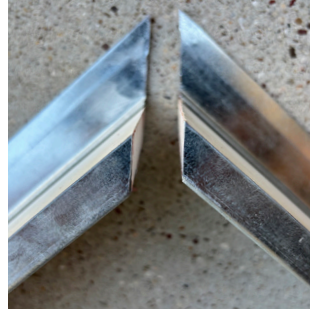
Miter cut FireRip so that the corners form connection with no gaps (Step 1 & 2). Joint to be tight and sealed as described in the UL Listing.

Step 2:

Secure as described in "Step 4 & 5 on previous page."

Option #1:

Step 1:



Step 2:



Option #2:

Step 1:

Cut 1st piece square so that it's length extends 11/16" beyond face of intersecting wall.

Step 2:

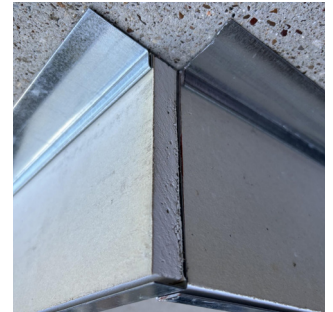
Cut 2nd piece square so that it joins without gaps to the back of 1st piece (Step 1 & 2). Joint to be tight and sealed as described in the UL Listing. Secure as described in "Step 4 & 5 on previous page."

Option #2:

Step 1:



Step 2:



Inside Corners

Cut end of first piece square to fit tight against the face of intersecting wall. Secure as described in "Step 4 & 5 on previous page."

Cut end of second piece square.

Step 1:

Mark notch to be cut out of mounting flange (Step 1).

Step 2:

Notch the mounting flange so that when installed, it does not overlap first piece and it installs tight to the underside of the floor/ceiling assembly (Step 2).

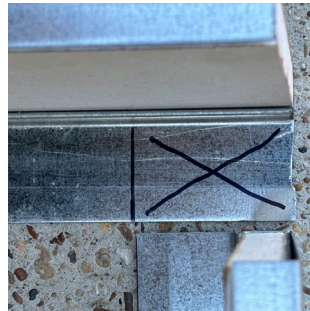
Step 3:

A maximum 1/8" gap allowed between intersecting mounting flanges when properly installed (Step 3). Secure as described in "Step 4 & 5 on previous page."

Note:

Butt joints between FireRip segments to be tight and sealed as described in the respective UL Listing.

Step 1:



Step 2:



Step 3:

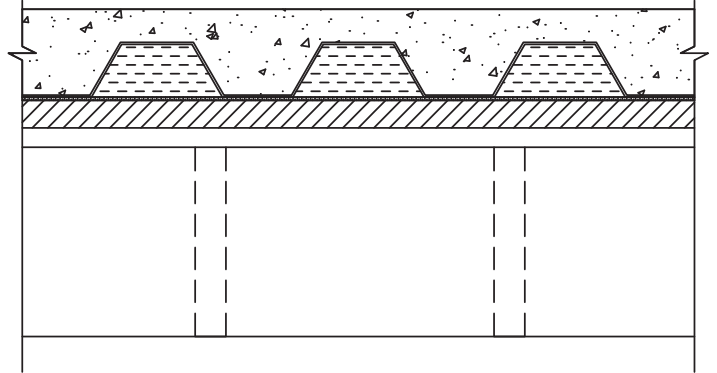


Fluted Metal Deck / Steel Beam

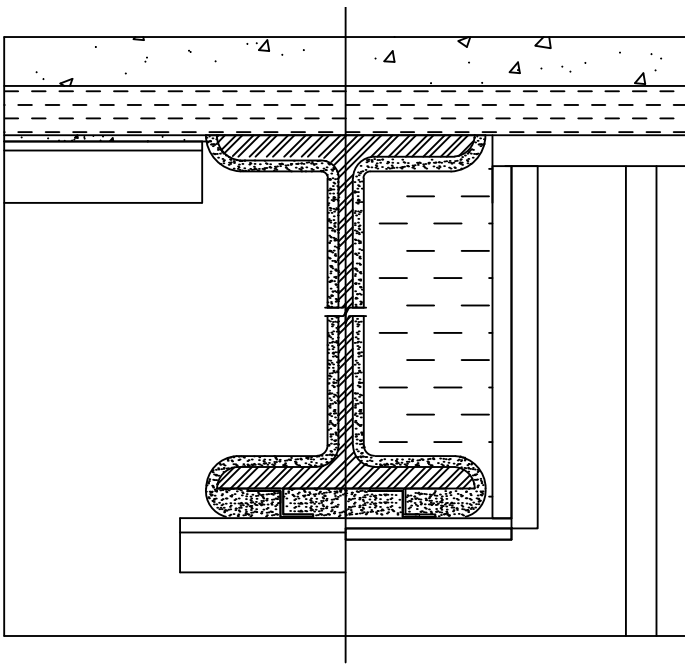
Note:

When installing FireRip to the underside of a fluted metal deck floor/ceiling assembly, under or parallel to a steel beam/bar joist, additional steps are required. Please refer to the appropriate UL Listed system for specific details for each condition.

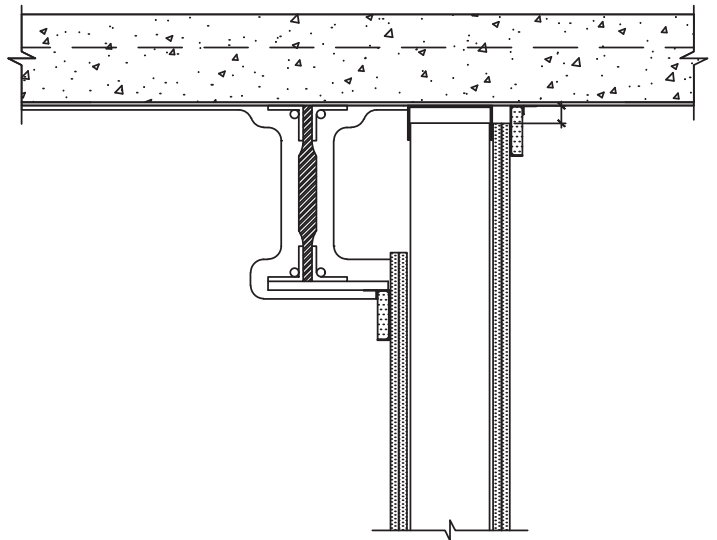
Standard Wall to Fluted Metal Deck:



Structural Member Through the Wall:



Steel Beam Parallel to Wall:



Product	Movement	Standard Wall	Shaft Wall	Fluted Deck	Concrete Deck	Installation	Paintable	Sound Test
Fire Bead FIRE RATED DEFLECTION BEAD	1/4" Comp Only	✓	✓		✓	Post Drywall	✓	✓
Fire Gasket FIRESTOPPING FOR BUILDING JOINTS	FG .5: 1/2" Overall FG 1: 1" Overall FG 1.5: 1-1/2" Overall	✓	✓	✓	✓	Pre Drywall	✓	✓
HOTROD TYPE X FIRESTOPPING FOR BUILDING JOINTS	1/2" Comp 1/4" Ext	✓	✓	✓	✓	Post/Pre Drywall	✓	✓
HOTROD XL FIRESTOPPING FOR BUILDING JOINTS	1/2" Comp 1/4" Ext	✓	✓	✓	✓	Post Drywall	✓	✓
FireRip MULTI-PURPOSE FIRE PROTECTION	FR2: 2" Overall FR3: 3" Overall	✓	✓	✓	✓	Post Drywall	✓	
FAS[®]-093X™ FAS[®]-093X™-V	15% of 1/2" Joint Width	✓	✓	✓	✓	Post Drywall	✓	✓

Product	UL / Approvals (UL 2079 5th Edition)
Fire Bead FIRE RATED DEFLECTION BEAD	HW-D-0624; HW-D-0625; HW-D-0554; HW-D-0550; BW-S-0024; WW-D-0104
Fire Gasket FIRESTOPPING FOR BUILDING JOINTS	HW-D-0515; HW-D-0514; HW-D-0524; HW-D-0551; HW-D-0550; HW-D-0554; HW-D-0600; HW-D-0620; HW-D-0652; HW-D-0518; HW-D-0553; HW-D-0573 ; HW-D-0623; WW-S-0057; BW-S-0024; WW-D-0104
HOTROD TYPE X FIRESTOPPING FOR BUILDING JOINTS	HW-D-0624; HW-D-0625; HW-D-0554; HW-D-0550; BW-S-0024; WW-D-0104; WW-S-0057; HW-D-0514; HW-D-0518; HW-D-0524; HW-D-0652; HW-D-0620; HW-D-0573; HW-D-0525; HW-D-0553; HW-D-0621; WW-S-0094
HOTROD XL FIRESTOPPING FOR BUILDING JOINTS	HW-D-0624; HW-D-0625; HW-D-0554; HW-D-0550; BW-S-0024; WW-D-0104, HW-D-0514; HW-D-0518; HW-D-0524; HW-D-0652; HW-D-0620; HW-D-0573; HW-D-0525; HW-D-0553; HW-D-0621; WW-S-0094
FireRip MULTI-PURPOSE FIRE PROTECTION	HW-D-0420; HW-D-0421; HW-D-1096; HW-D-0451; HW-D-0453; HW-D-0461; HW-D-0463; HW-D-0582; HW-D-0584; HW-D-0587; HW-D-0594; HW-D-0602; HW-D-0585
FAS[®]-093X™ FAS[®]-093X™-V	HW-D-0596; HW-D-0621; WW-D-0172

YOUR SUCCESS DEPENDS ON QUALITY BUILDING PRODUCTS AND SO DOES OURS.

For over 30 years, Marino\WARE®, a division of Ware Industries Inc., has served our customers with top quality cold-formed steel framing products, while delivering better solutions to design and construction challenges. We are committed to providing a superior customer experience through a vast selection of readily available products, a knowledgeable sales team, comprehensive technical support and services, prompt delivery through our fleet of trucks, and an extensive distribution network.

Our best-in-class product development team delivers innovative solutions to installation and cost challenges with products designed to save time, labor, and materials. In addition, we utilize the latest in roll forming techniques, maintain the latest level of technology available to the steel framing industry, and strictly adhere to all ASTM specifications.

Marino\WARE is 100% American-owned and operated. We take pride in creating local jobs, supporting local communities, and manufacturing products that reflect the uncompromising skill and ethics of our professional team. We operate state-of-the-art production facilities in New Jersey, Georgia, and Indiana, as well as a sales office in New York.

Visit MarinoWARE.com to experience our full line of innovative solutions.

For more information, please contact Marino\WARE® Technical Services at 866.545.1545

This technical information reflects the most current information available and supersedes any and all previous publications effective February 26, 2026 | MW Fire & Sound Installation Guide | © WARE Industries, Inc. 2026

Marino\WARE® operates state-of-the-art production facilities in New Jersey, Georgia, and Indiana, as well as a sales office in New York.

New Jersey Facility
400 Metuchen Road
South Plainfield, NJ 07080
800.627.4661
908.757.9000
Fax: 908.412.1442

Georgia Facility
777 Greenbelt Parkway
Griffin, GA 30223
800.504.8199
678.688.1312
Fax: 678.688.1379

Indiana Facility
4245 Railroad Avenue
East Chicago, IN 46312
866.636.6002
219.378.7100
Fax: 219.378.7106

New York Sales Office
51 John St. Ste. 1
Babylon, NY 11702
800.627.4667
631.691.2200
Fax: 631.691.1492

Marino\WARE® DesignGroup™
100 Hendrick Drive, Suite
200
McDonough, GA 30253
866.545.1545
678.688.7780
Fax: 770.507.2605