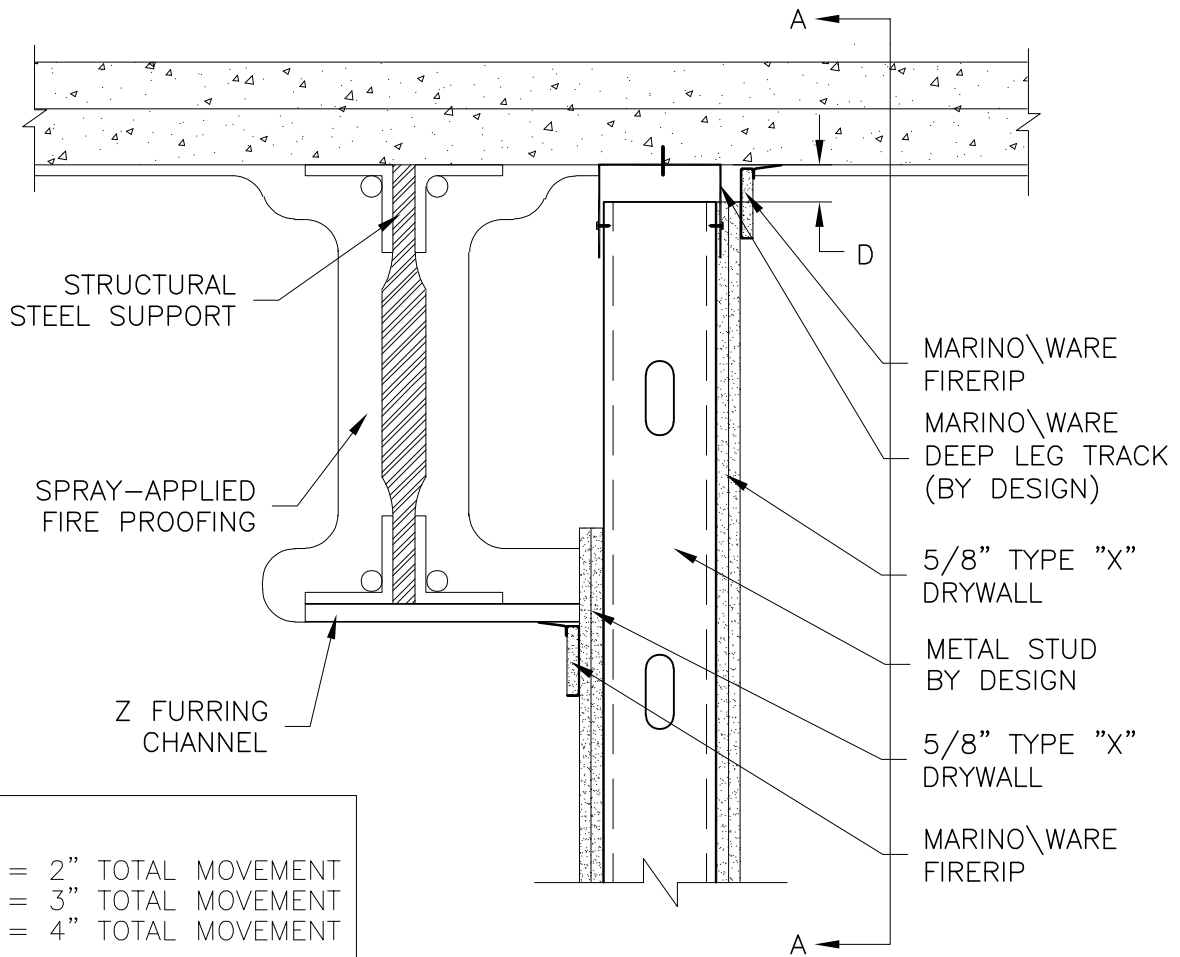


SECTION A-A



HW-D-0582 PARALLEL TO I-BEAM

NOTES:

- 1.) SINGLE LAYER OF 5/8" TYPE X DRYWALL FOR 1 HOUR AND 2 LAYERS FOR 2 HOURS.
- 2.) ALWAYS CHECK UL FIRE RESISTANCE DIRECTORY FOR COMPLETE DESIGN REQUIREMENTS.